

ANATOMIA E PATOLOGIA EM IMAGENS III

PROF FERNANDO HENRIQUE ALVES BENEDITO



UniSALESIANO



Exames de imagens

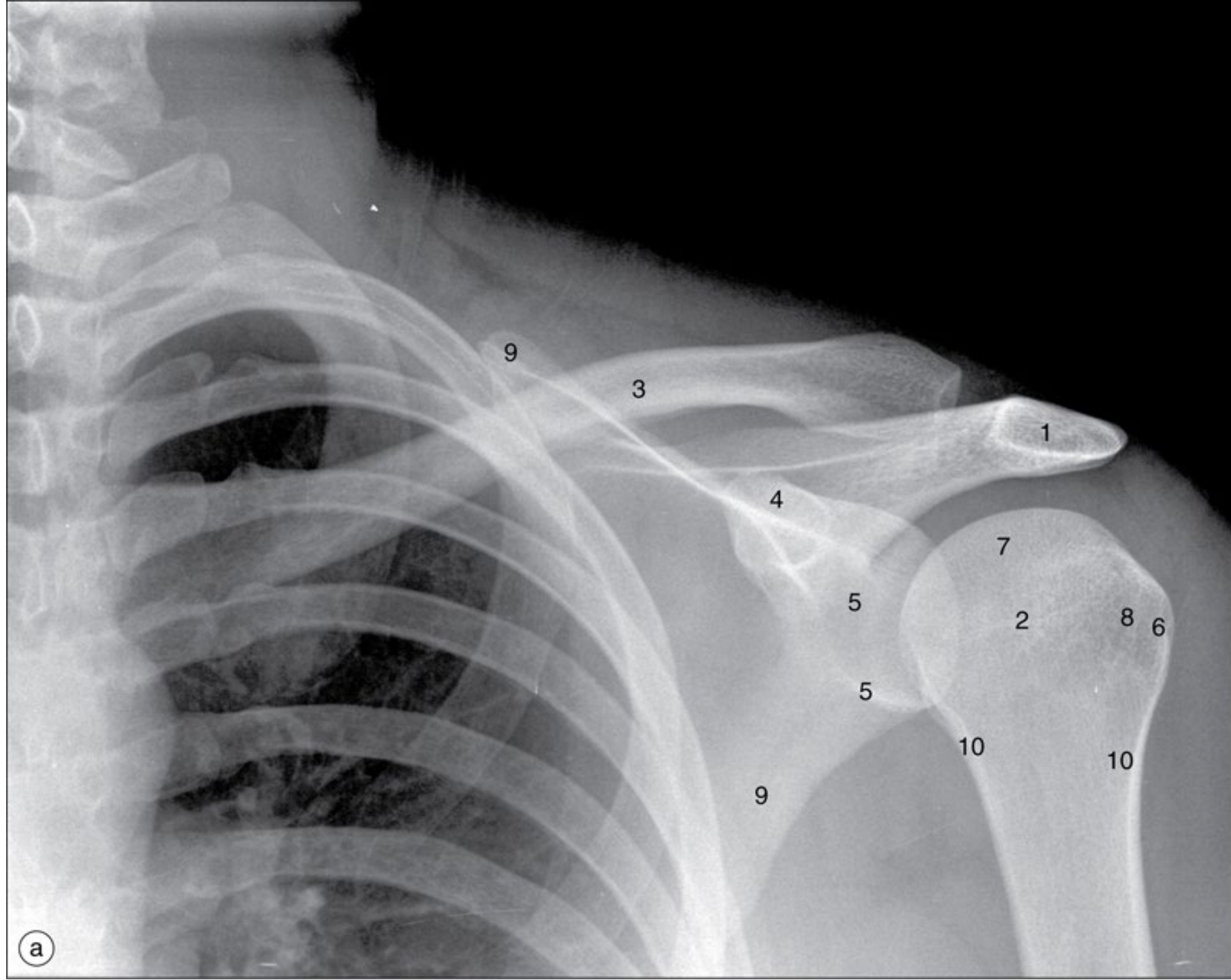
- Encéfalo
- Crânio
- Pescoço
- Coluna vertebral
- Membro superior
- Mama e axila
- Tórax, Pulmões, mediastino
- Vasos do coração
- Abdome
- Pelve
- Ultrassonografia do abdome superior
- Ultrassonografia de abdome e pelve
- Quadril
- Membros inferiores
- Exames funcionais

Exames de imagens

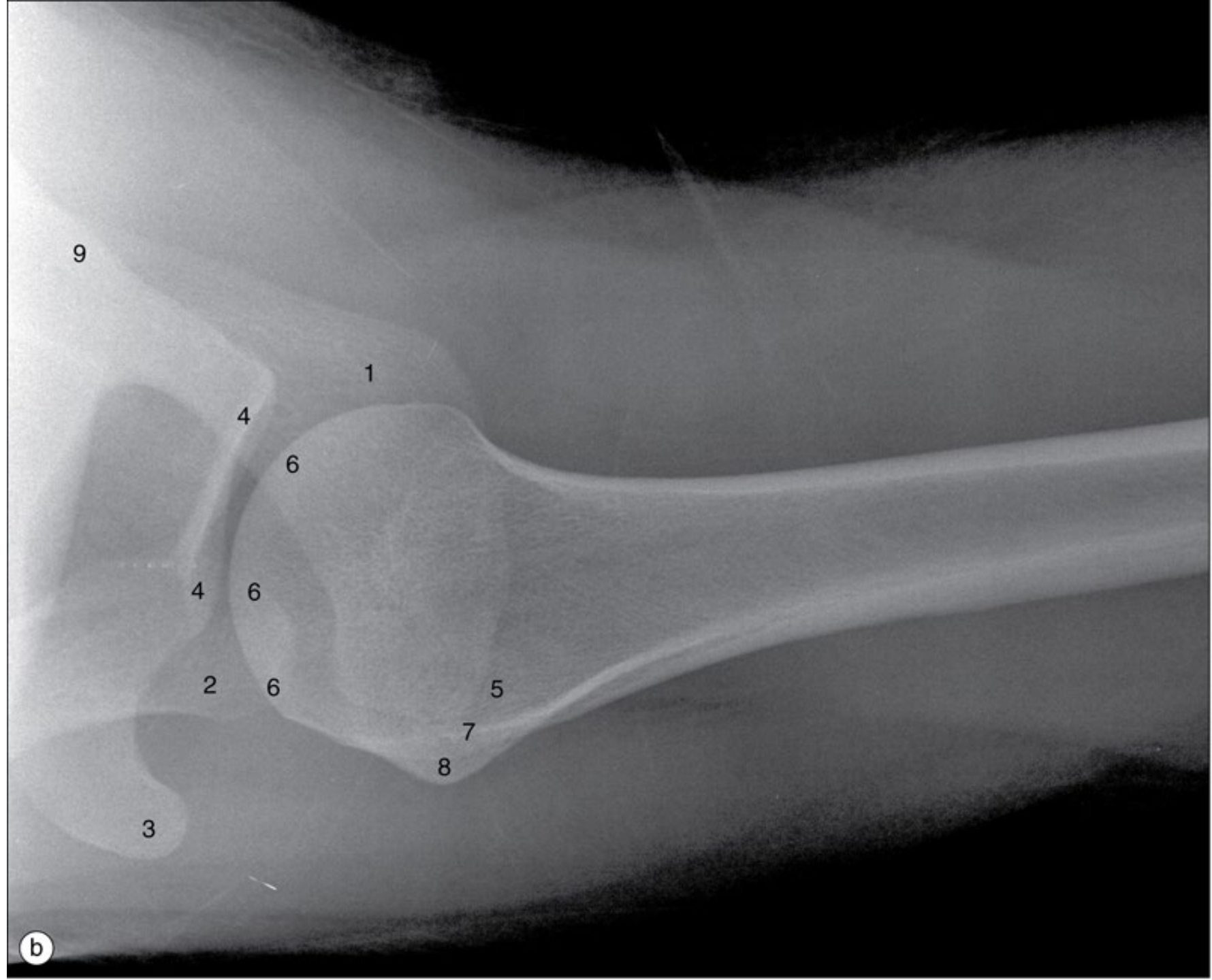
- Encéfalo
- Crânio
- Pescoço
- Coluna vertebral e medula espinhal
- **Membro superior**
- Mama e axila
- Tórax, Pulmões, mediastino
- Vasos do coração
- Abdome
- Pelve
- Ultrassonografia do abdome superior
- Ultrassonografia de abdome e pelve
- Quadril
- Membros inferiores
- Exames funcionais

Membro superior

(a) Ombro, radiografia anteroposterior.

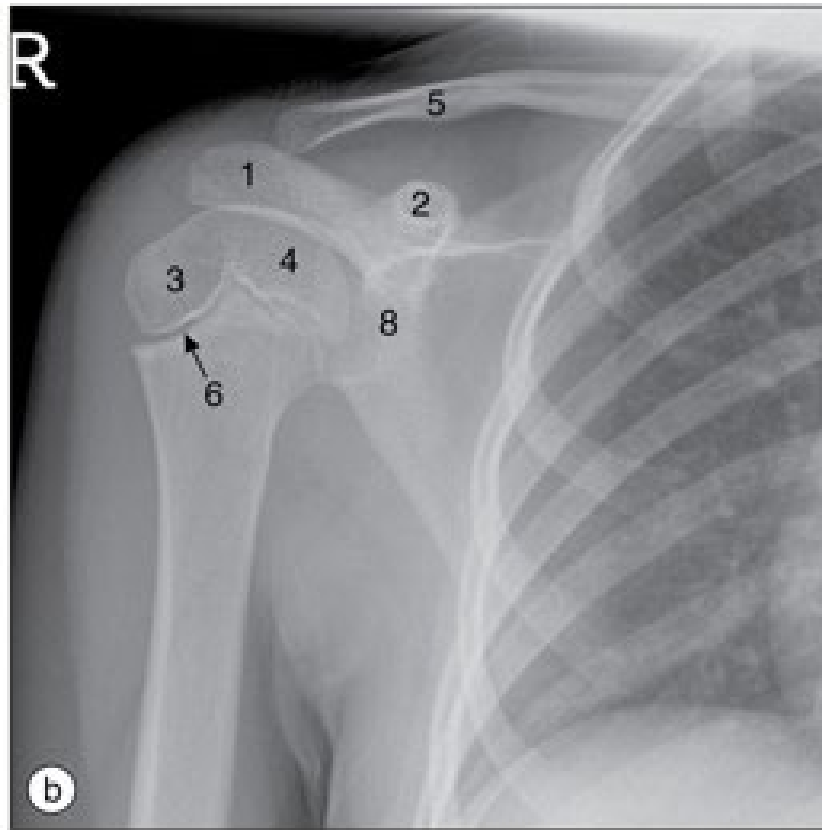
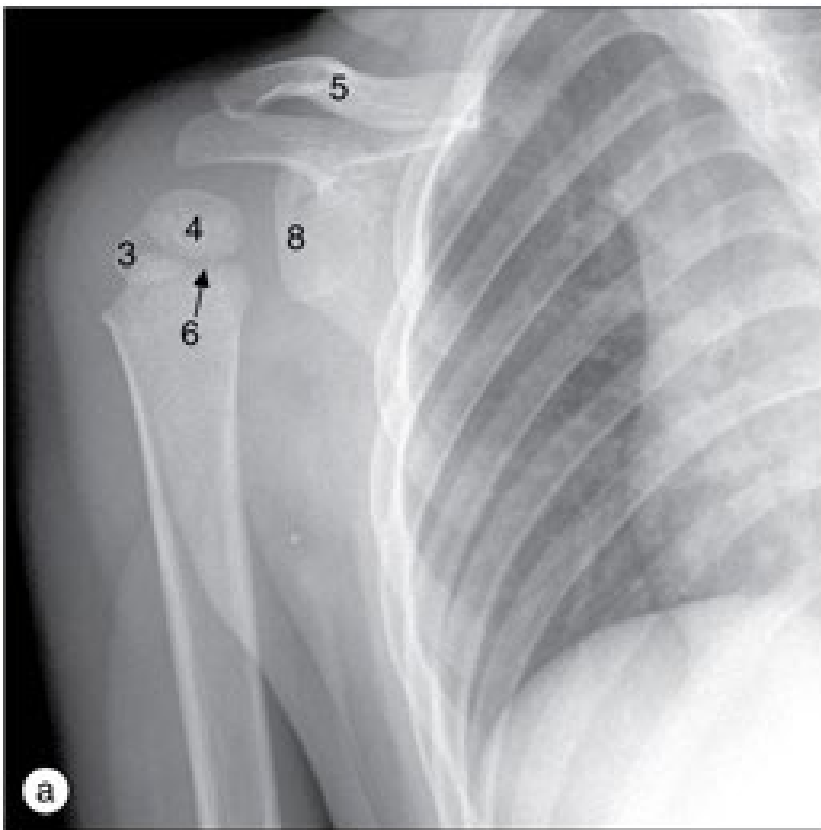


Ombro

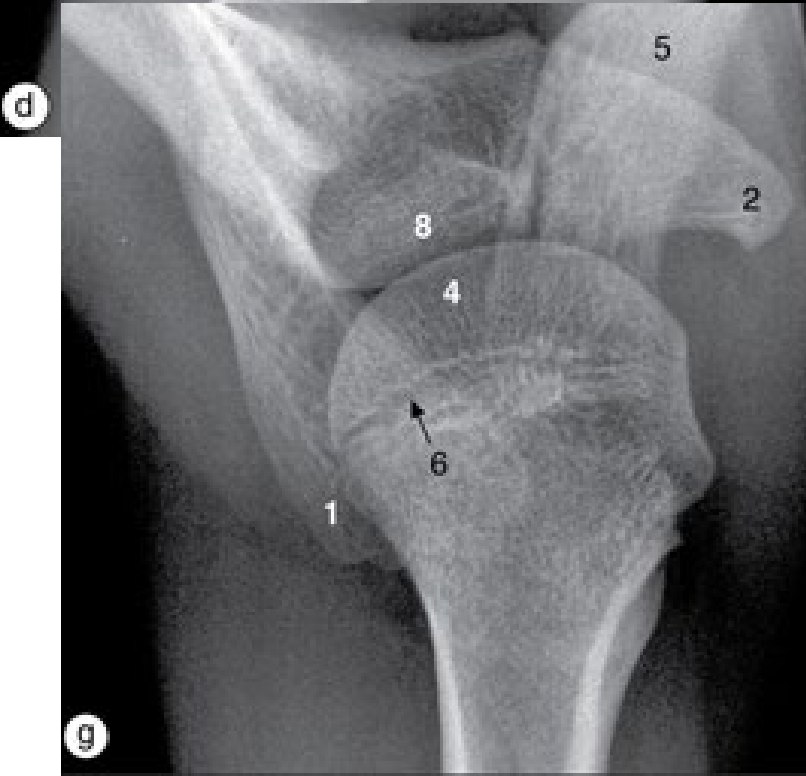
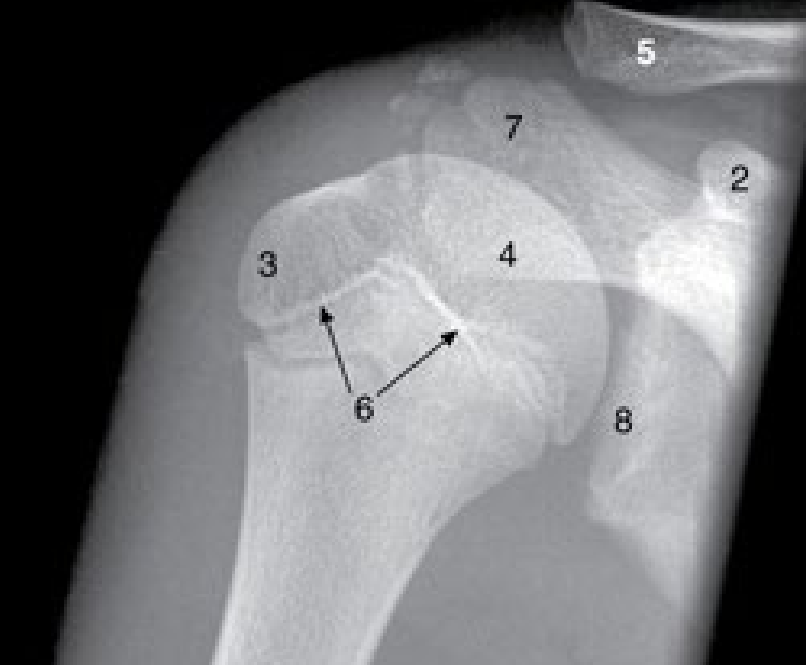


(b) Ombro, radiografia axial (superoinferior).

Ombro



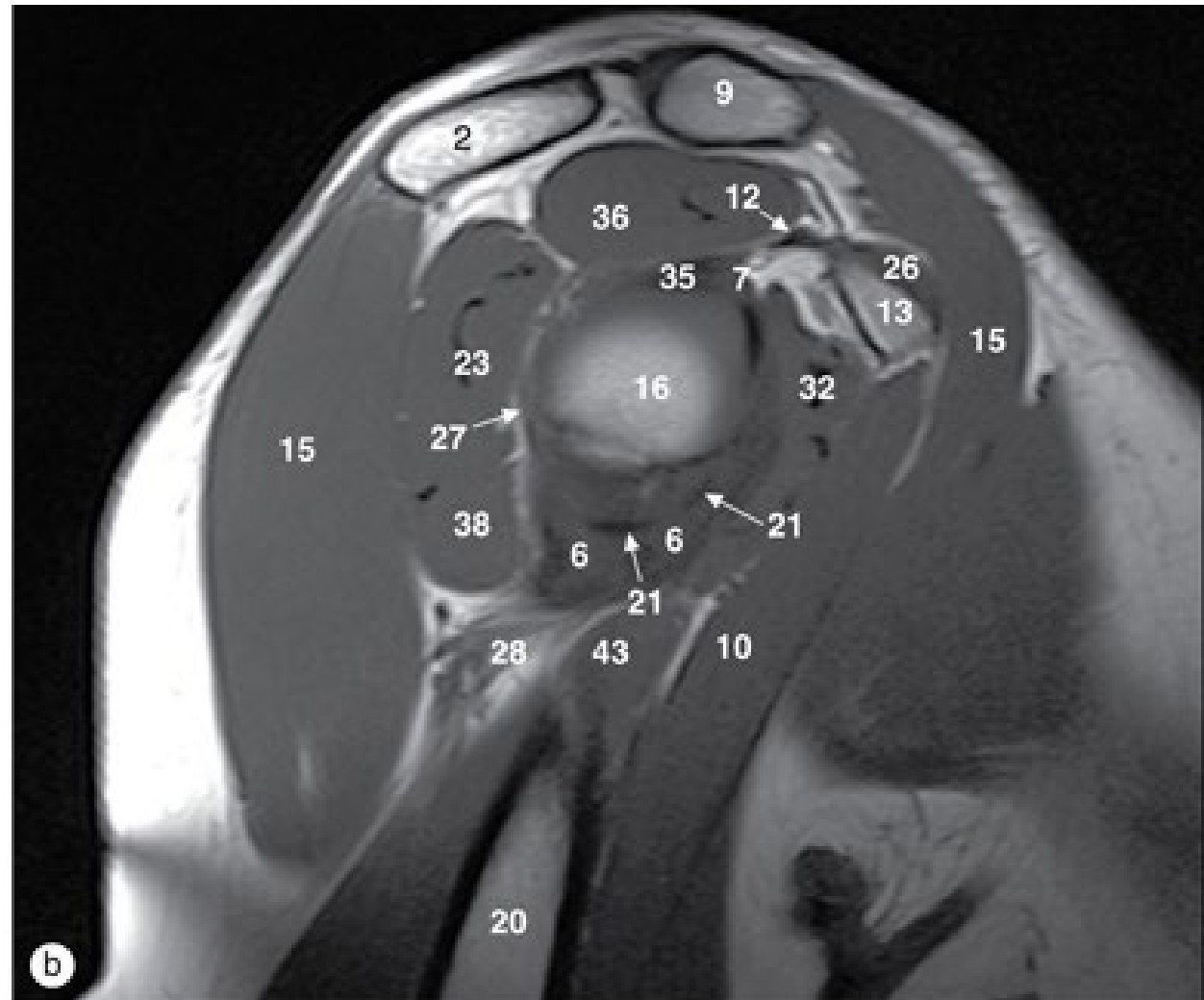
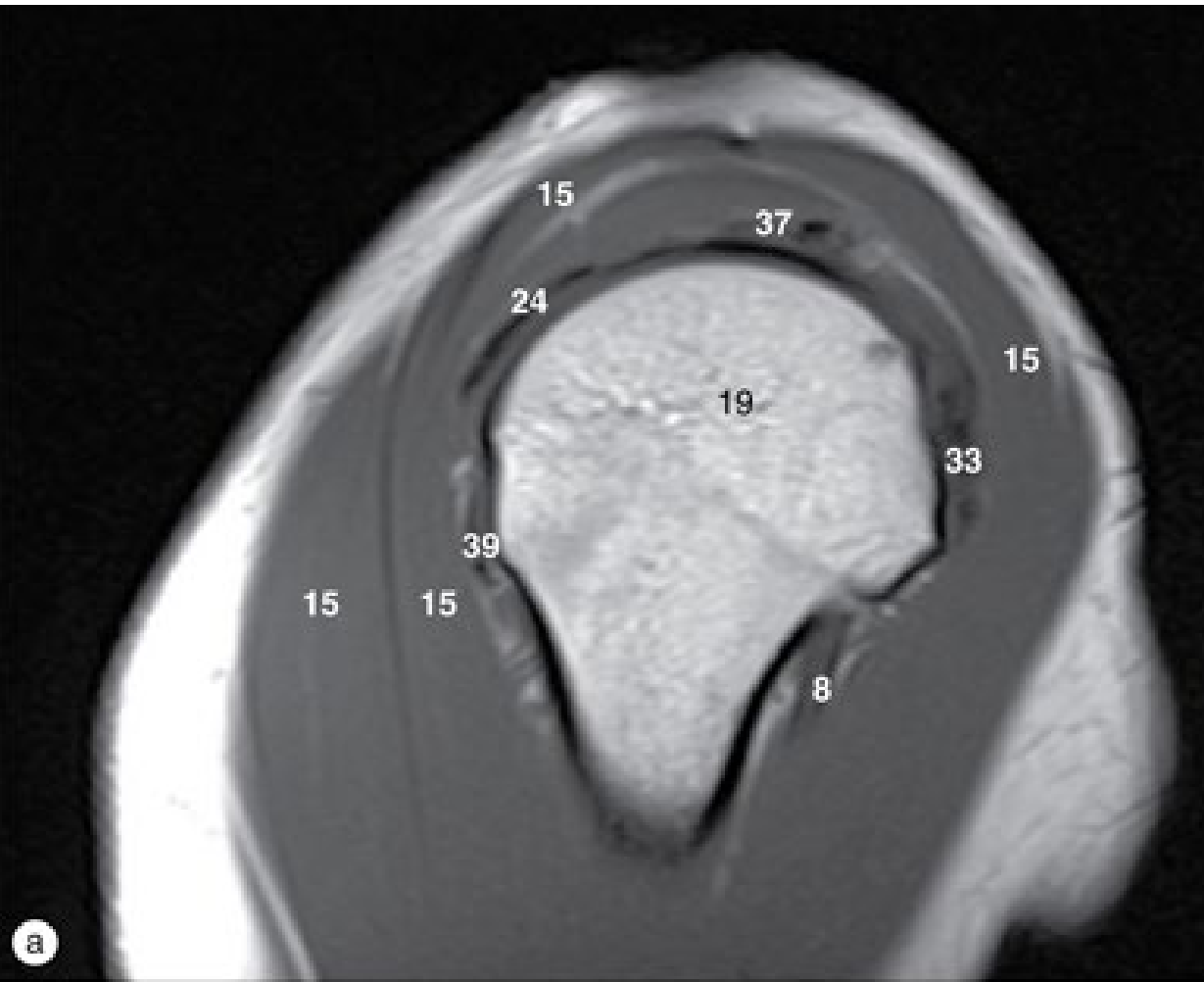
Ombro, (a) radiografia anteroposterior de uma criança de um ano, (b) radiografias anteroposterior e (c) axial de uma criança de seis anos



Ombro: (d) radiografias anteroposterior e (e) axial de uma criança de 12 anos, (f) radiografias anteroposterior e (g) axial de uma criança de 14 anos.

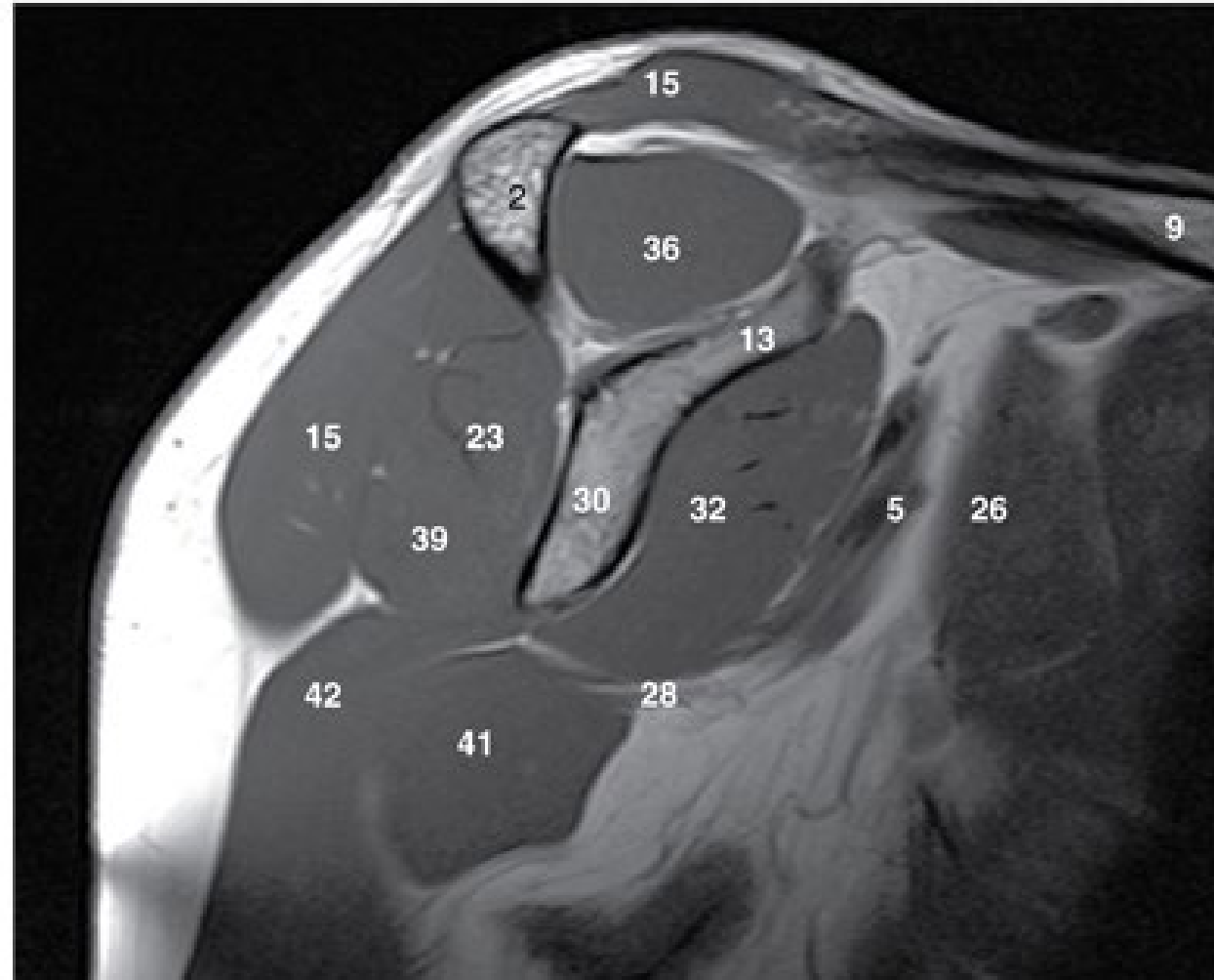
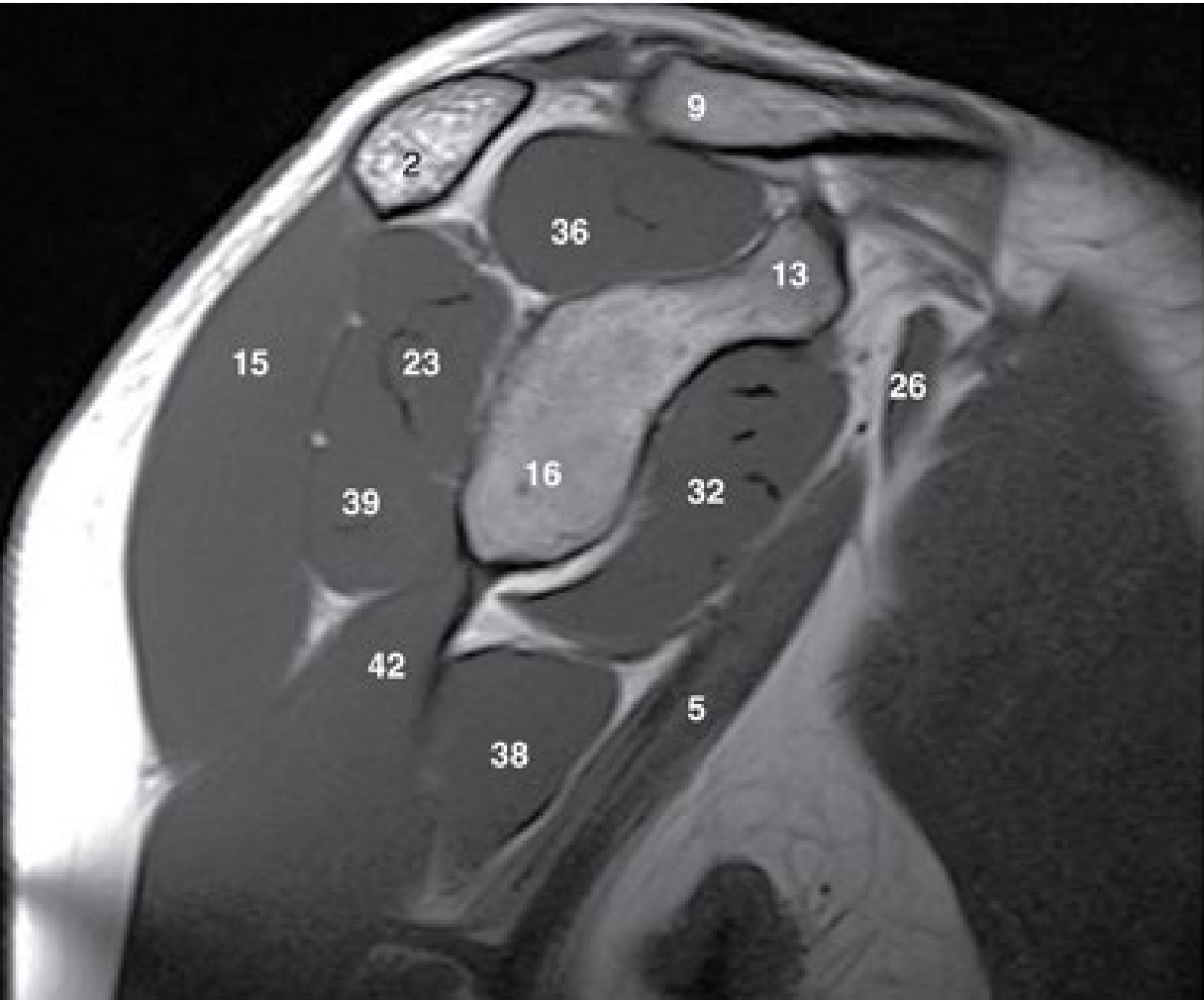
Ombro

Ombro



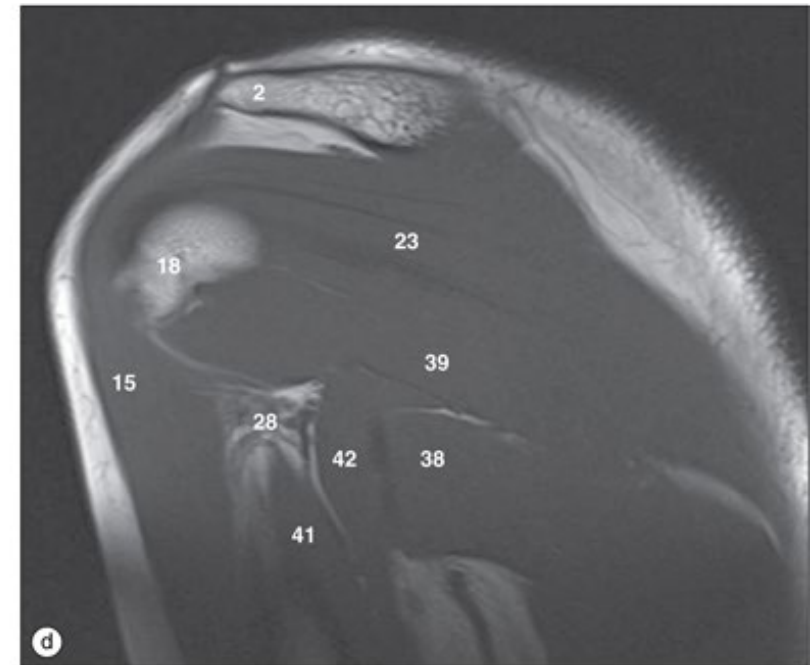
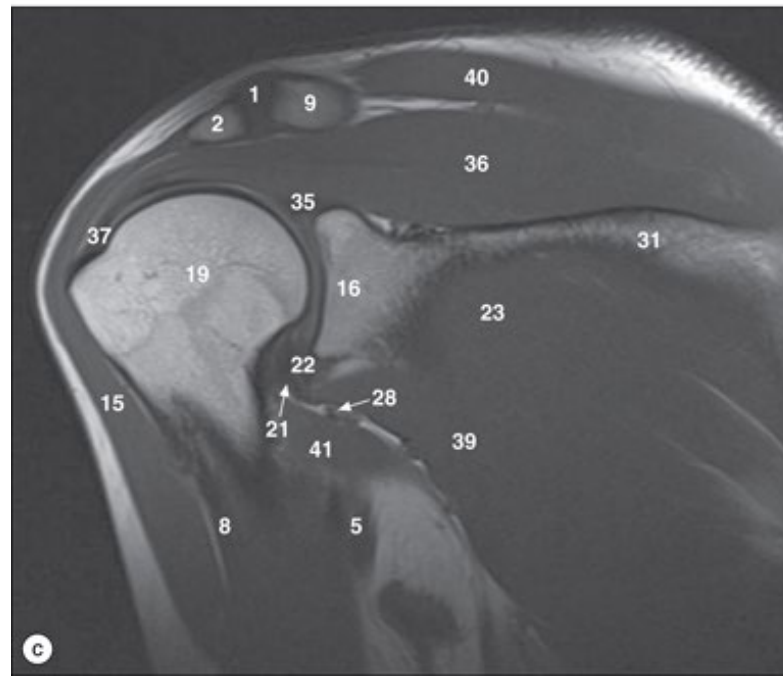
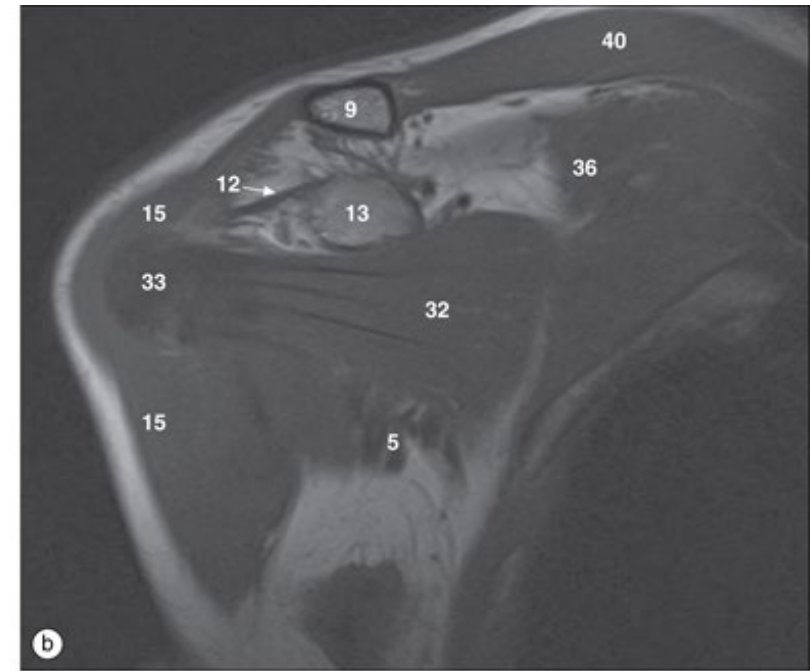
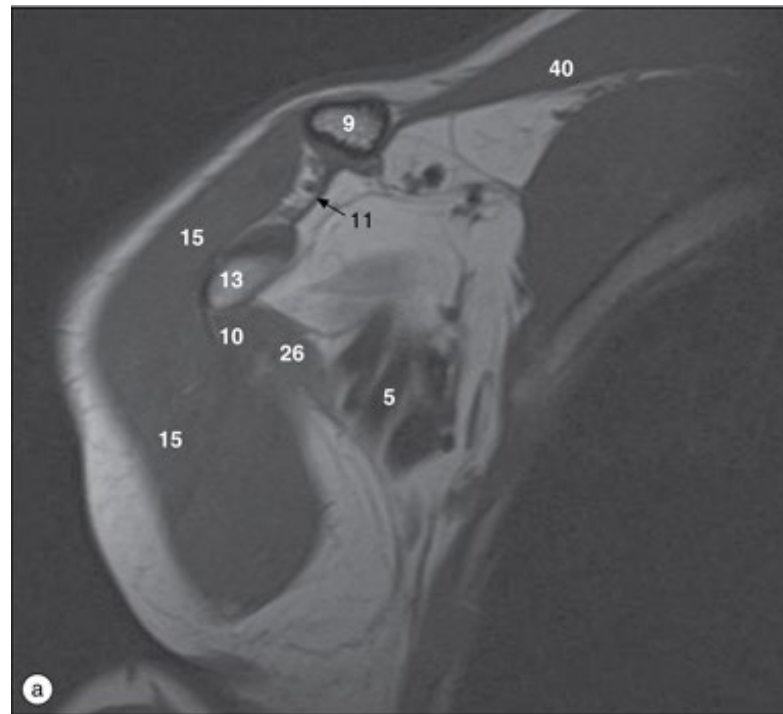
Ombro, imagens de RM sagitais, de medial a lateral.

Ombro



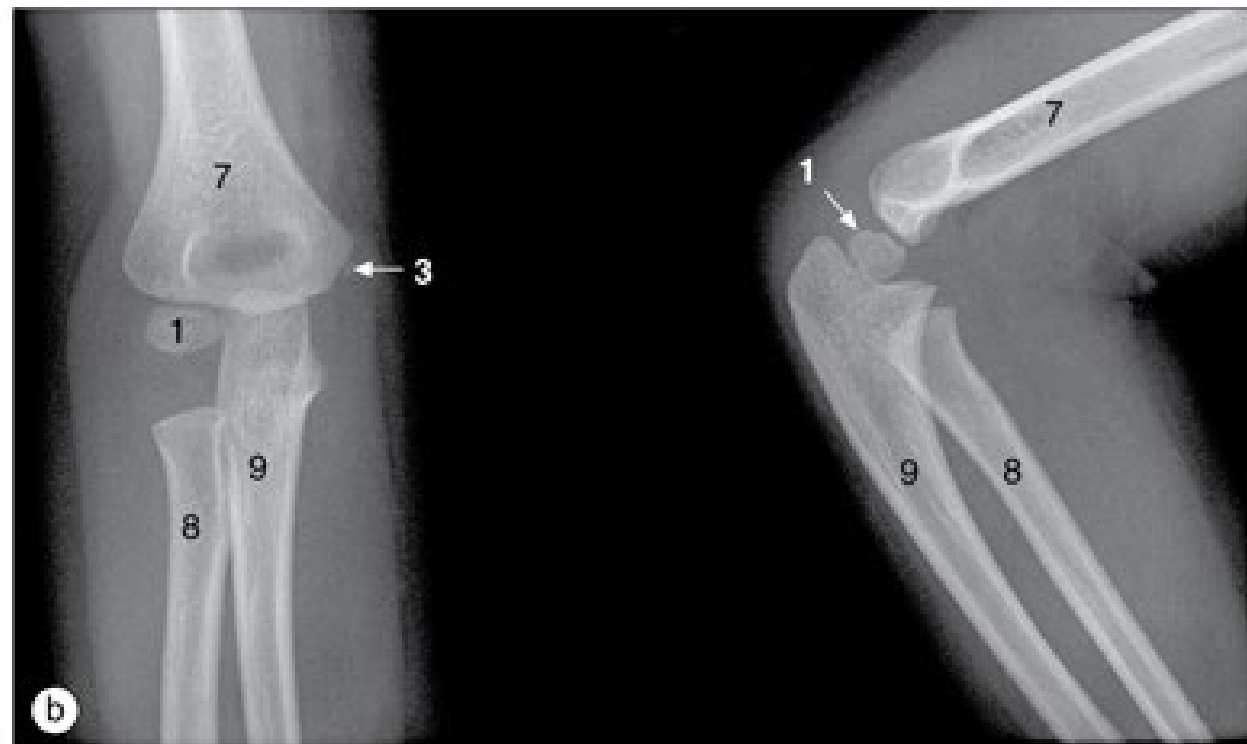
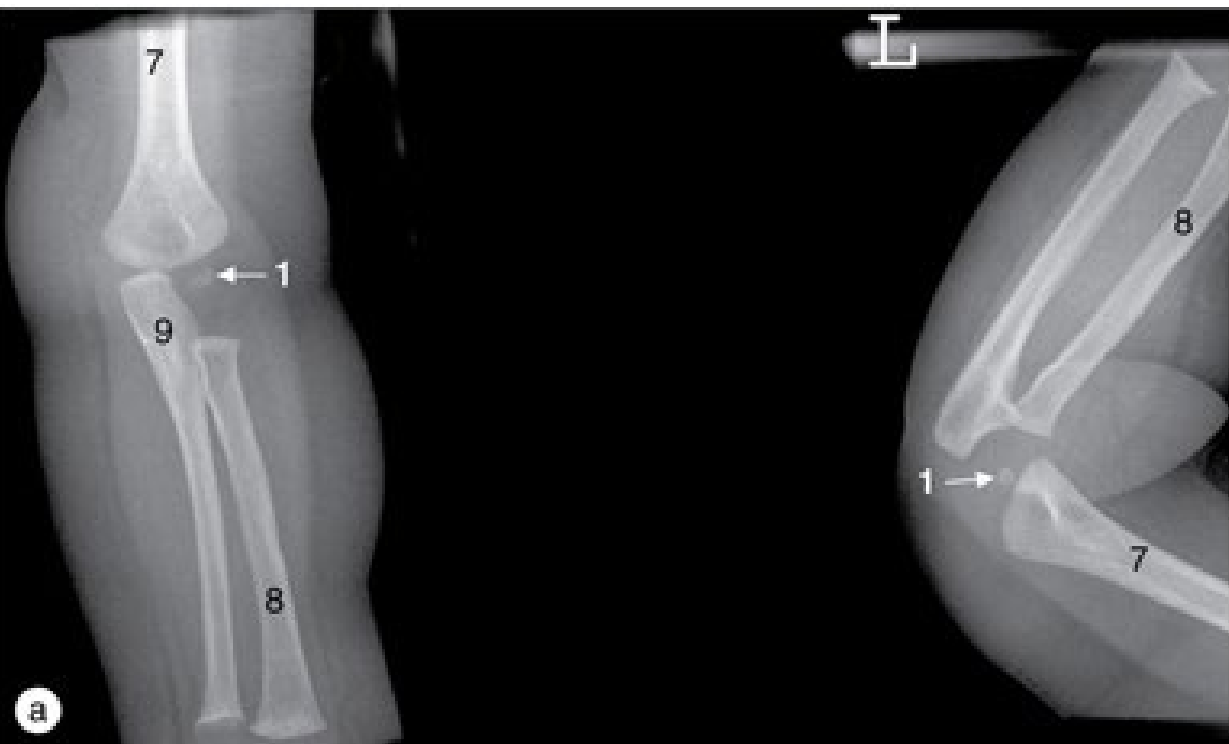
Ombro, imagens de RM sagitais, de medial a lateral.

Ombro



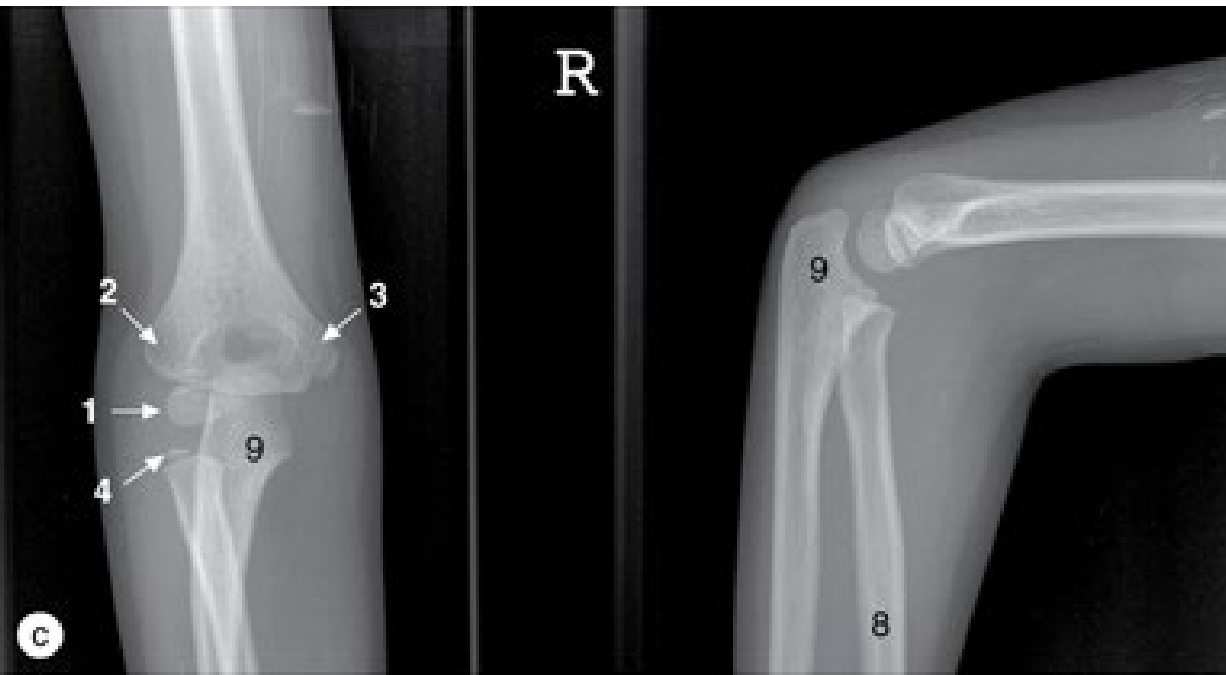
Ombro, imagens de RM coronais,
de anterior a posterior.

Cotovelo

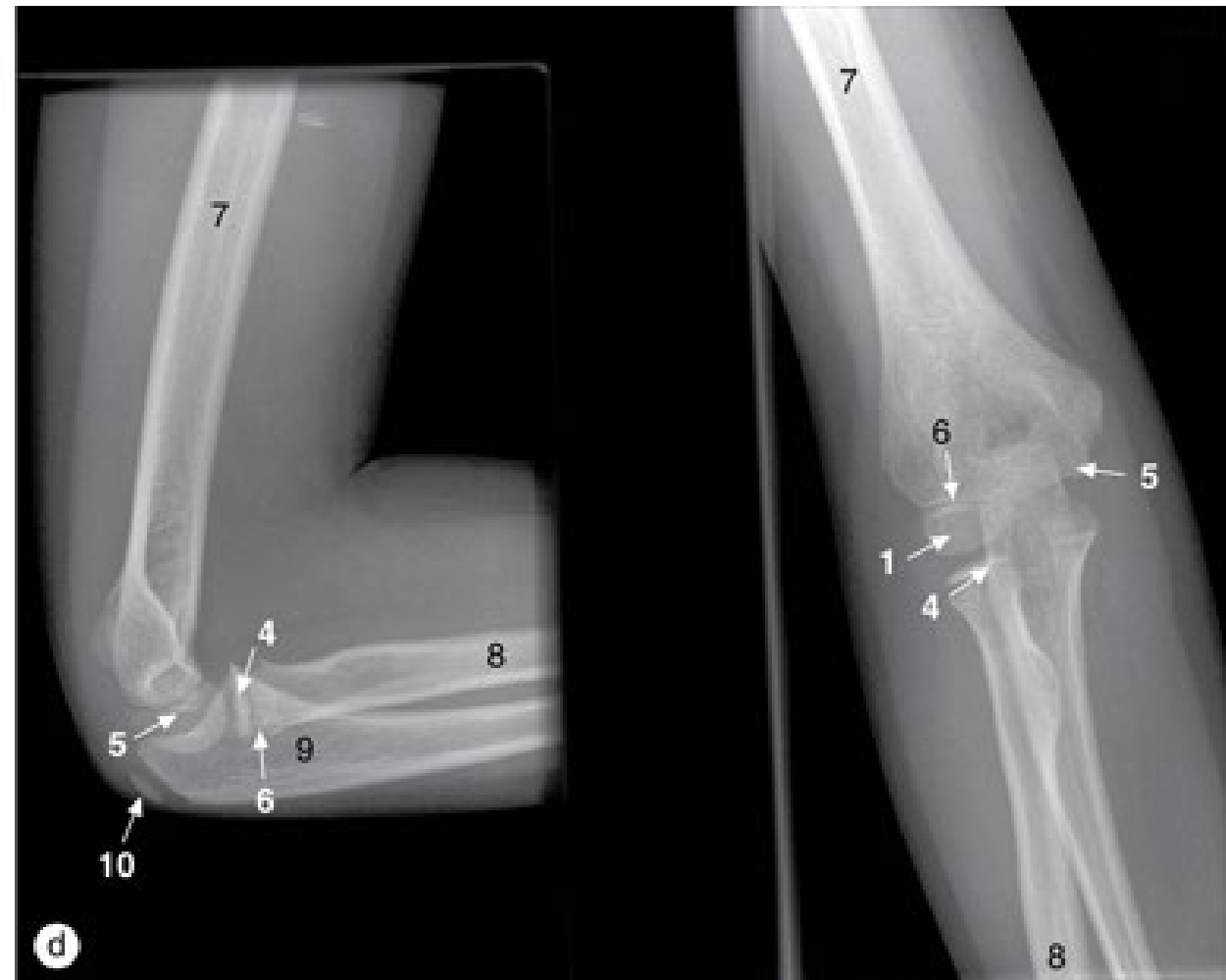


Radiografias do cotovelo, (a) criança de sete meses, (b) criança de três anos,

Cotovelo

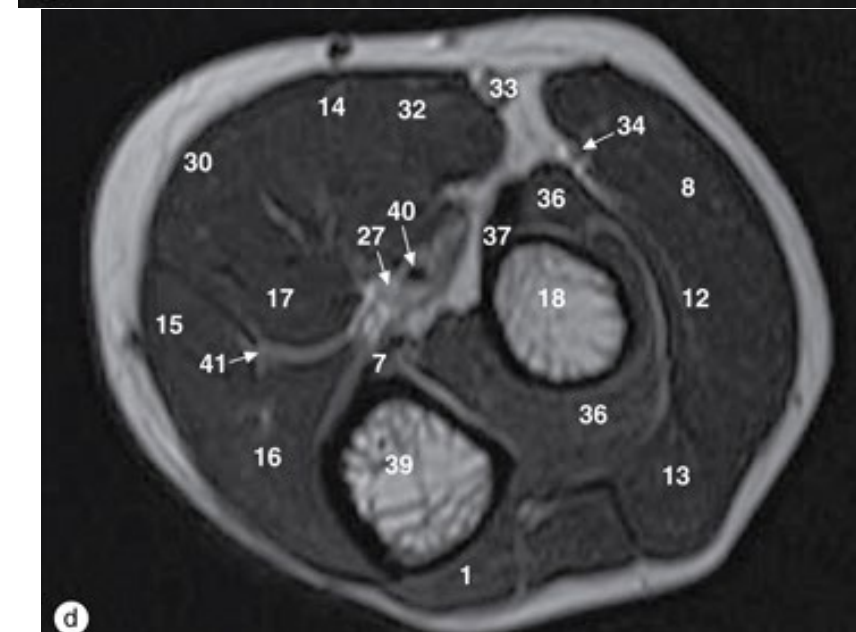
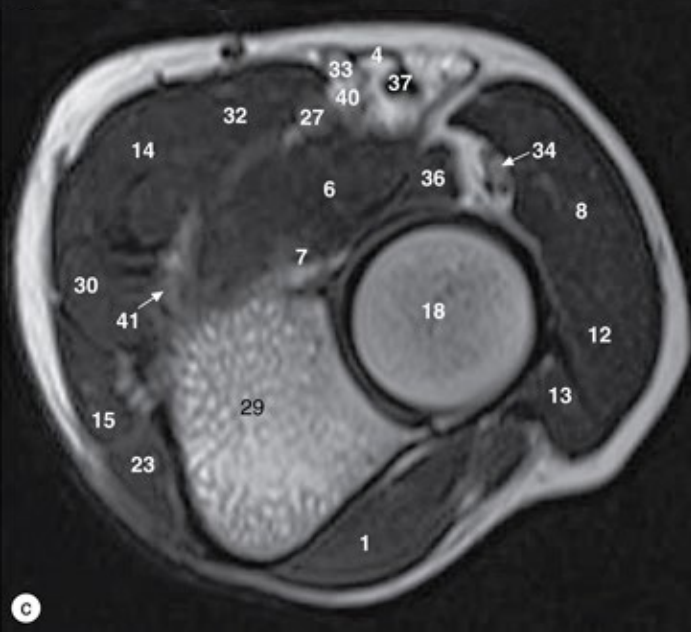
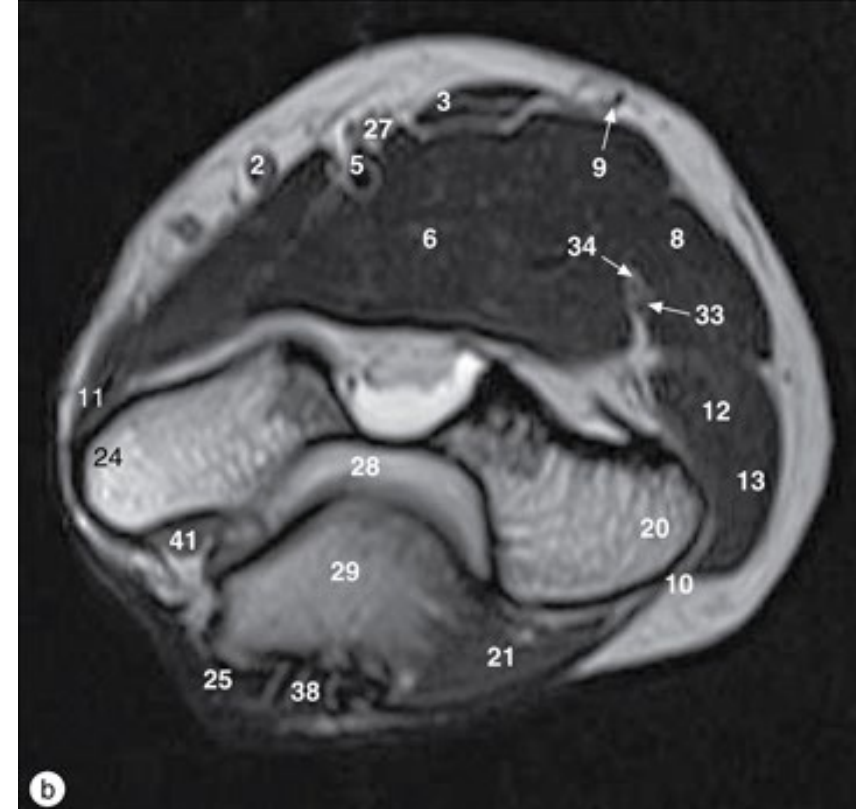
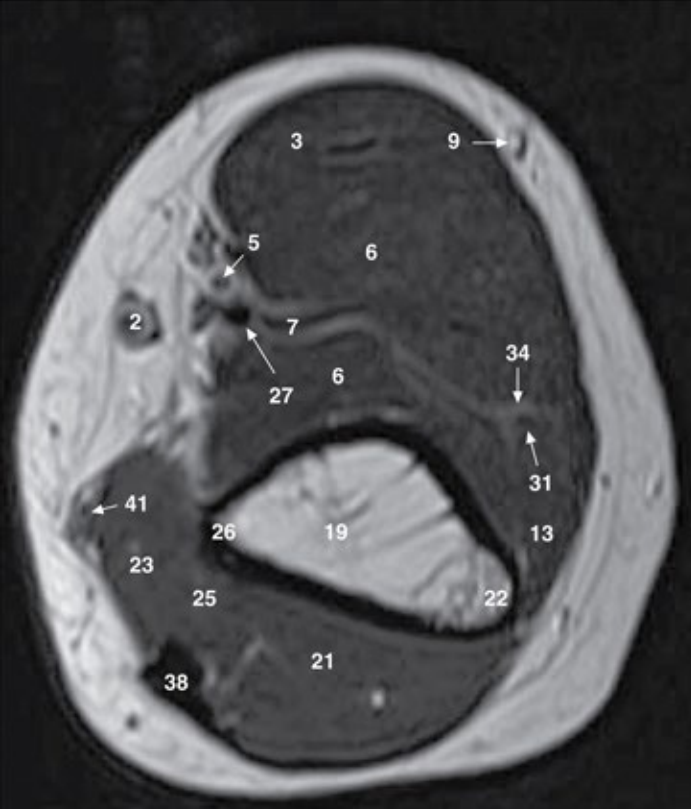


(c) criança de seis anos, (d) criança de nove anos.



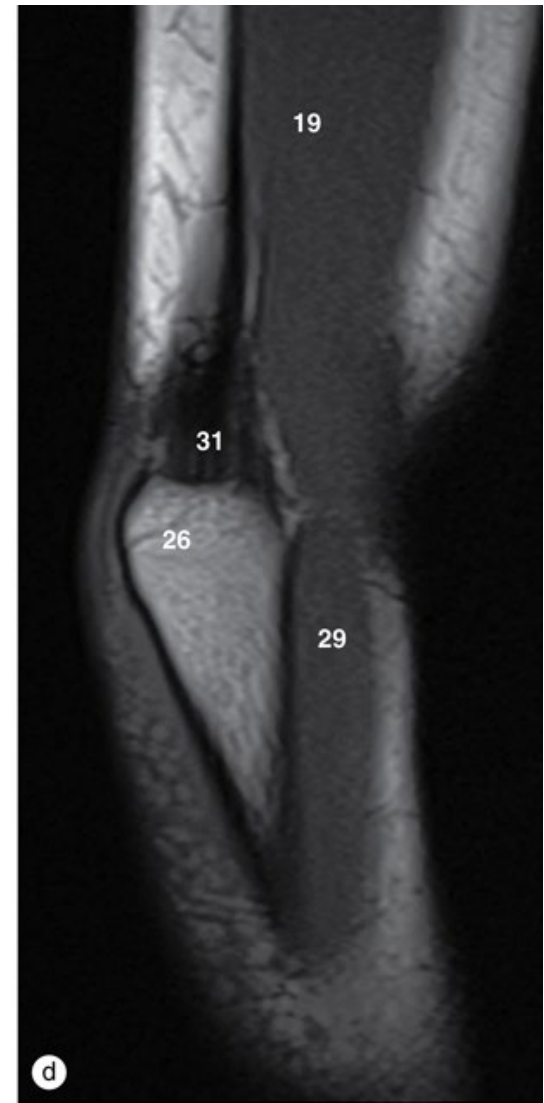
Cotovelo

Cotovelo, imagens de RM axiais, de superior a inferior.



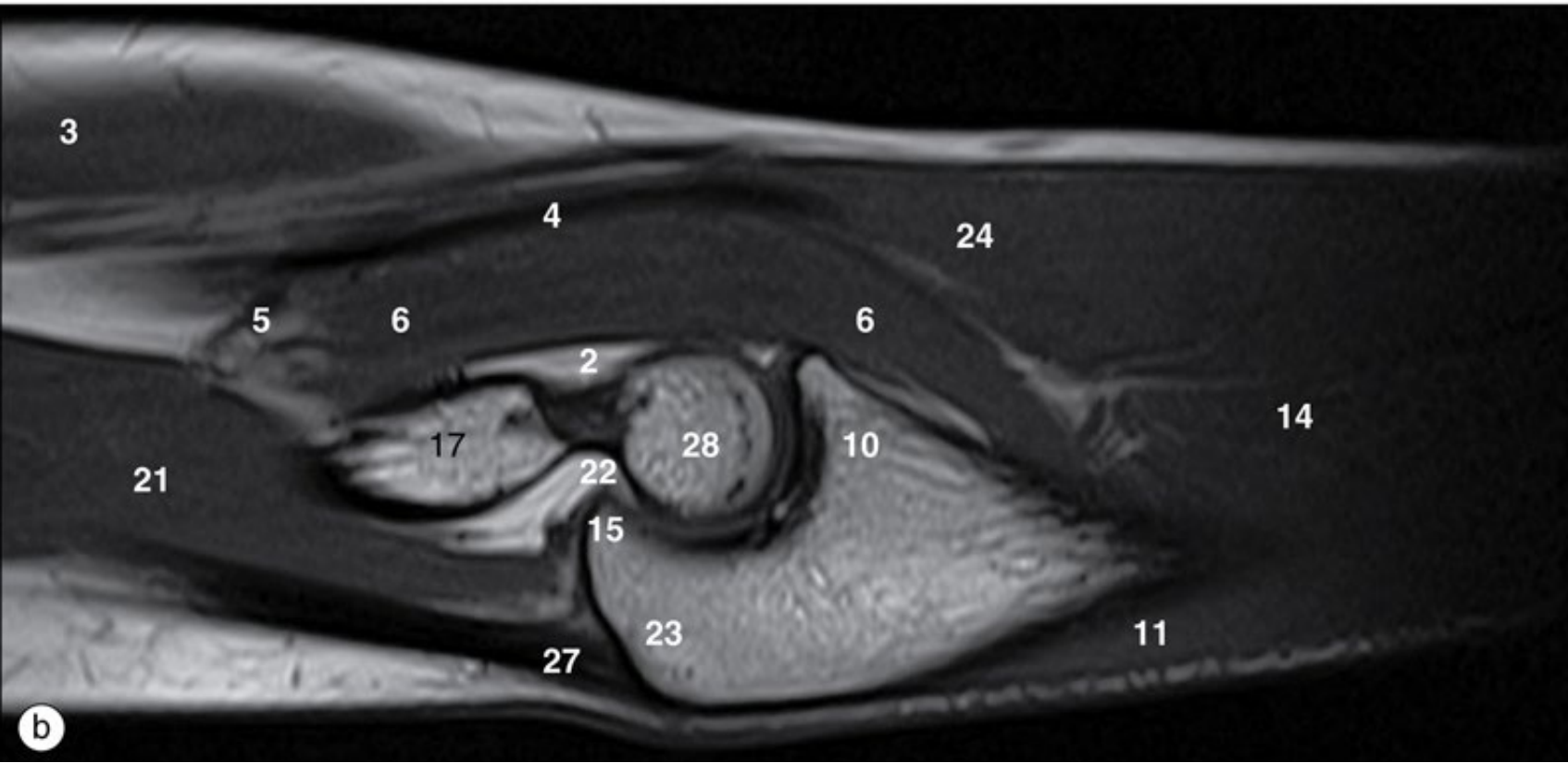
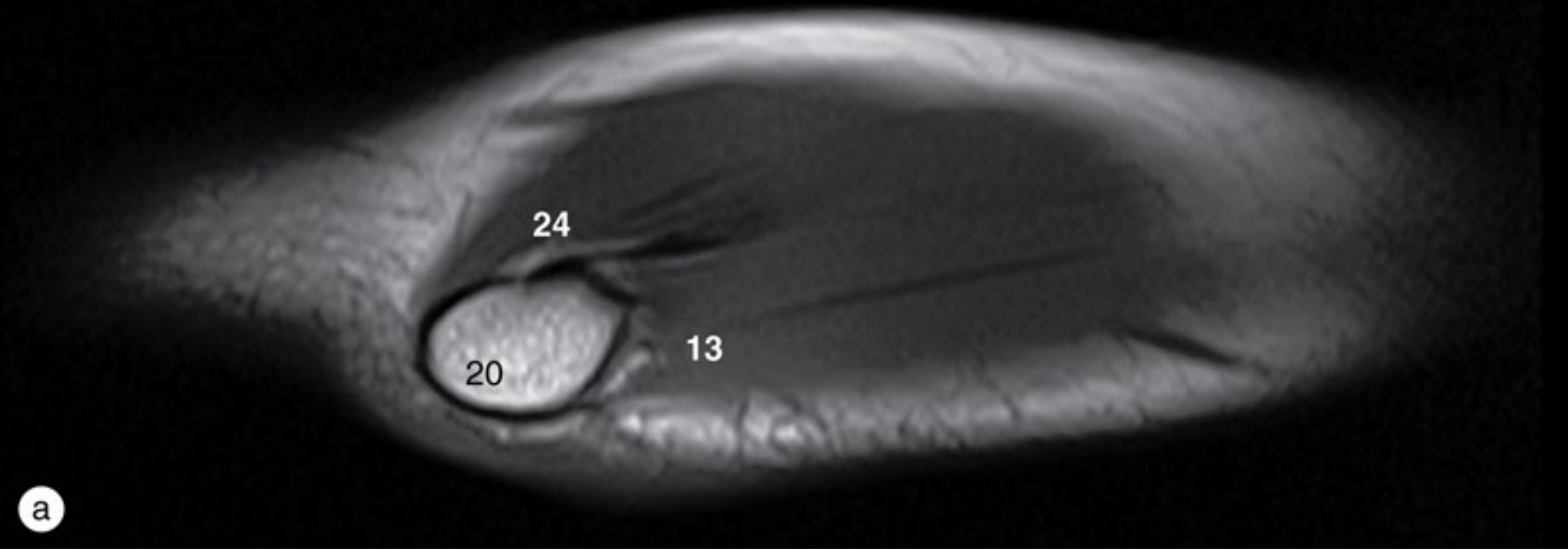
Cotovelo

Cotovelo, imagens de RM coronais, de anterior a posterior.



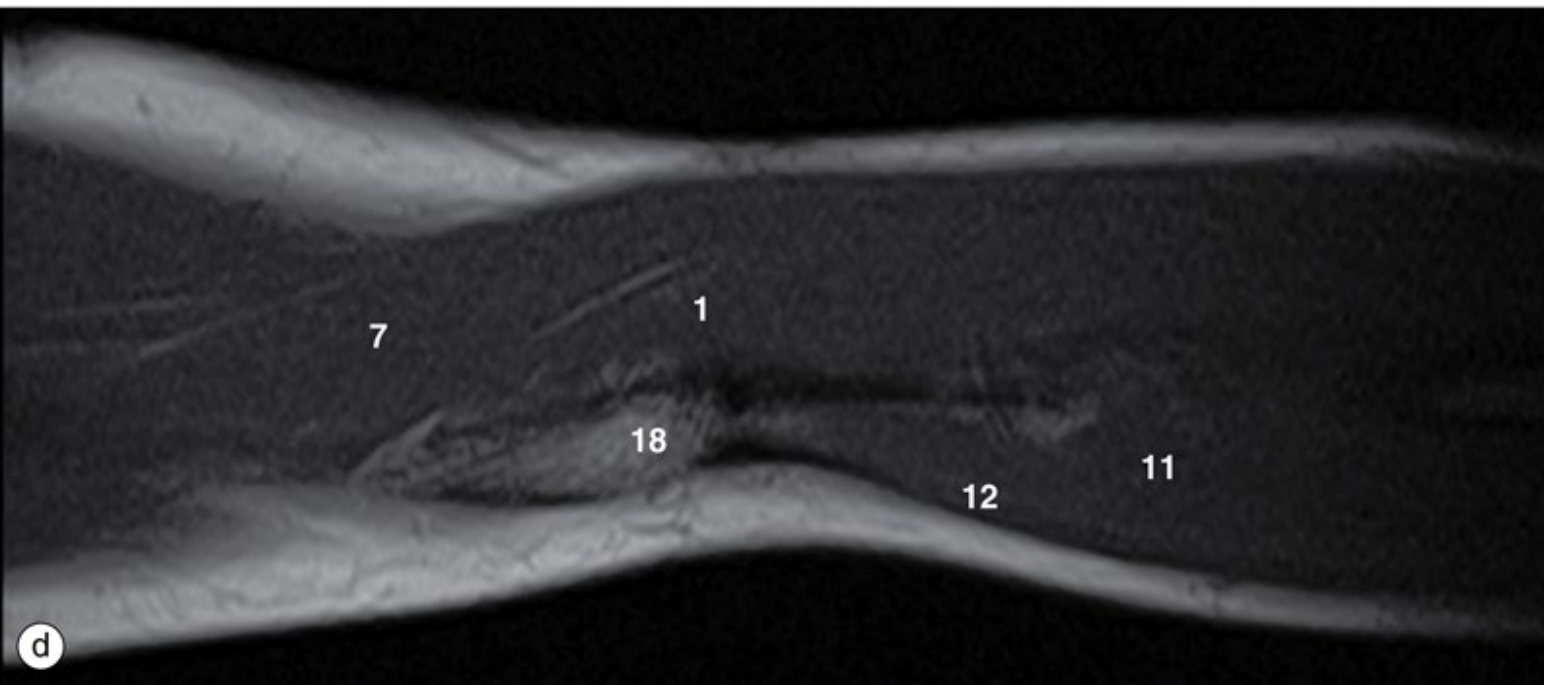
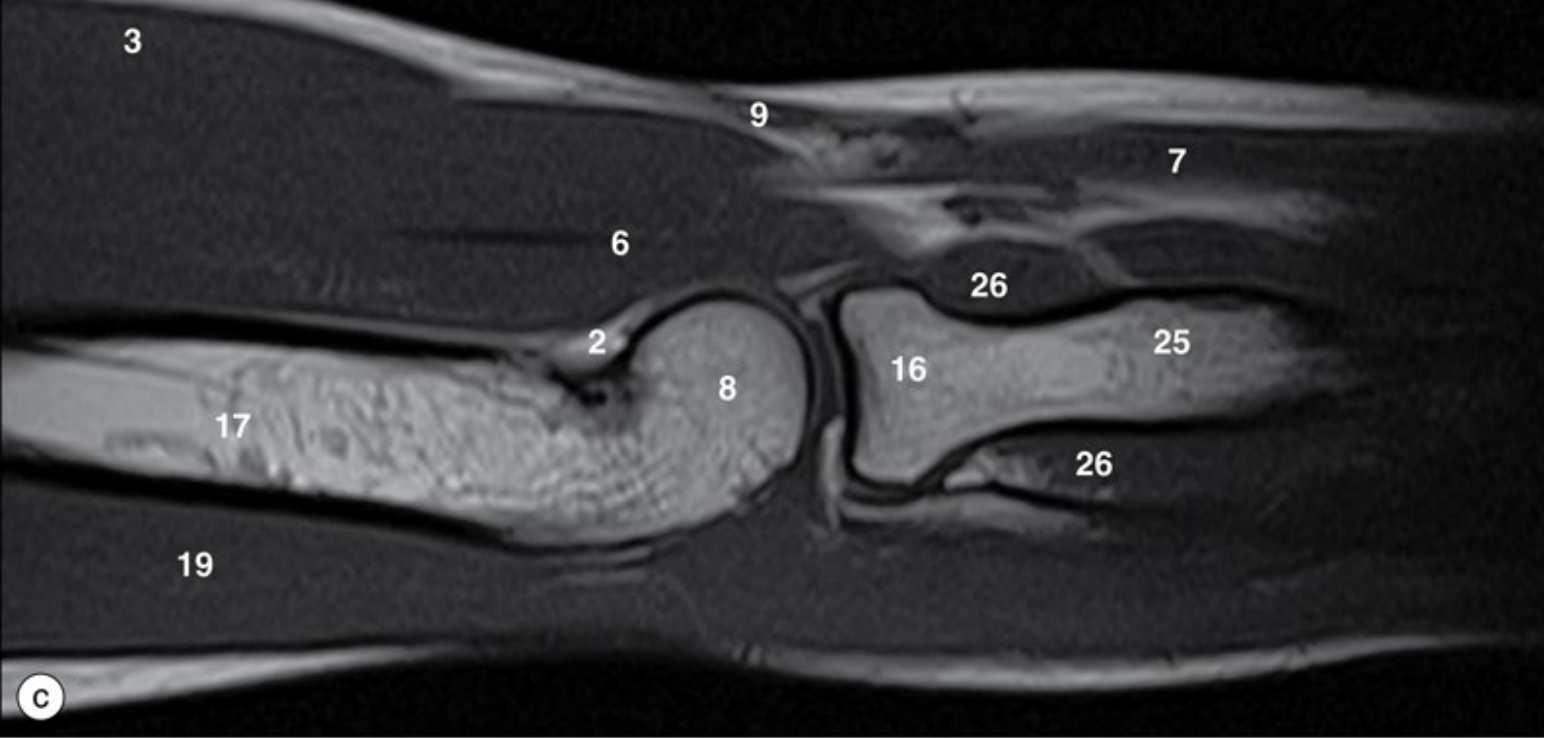
Cotovelo

Cotovelo, imagens de RM sagitais, de medial a lateral.

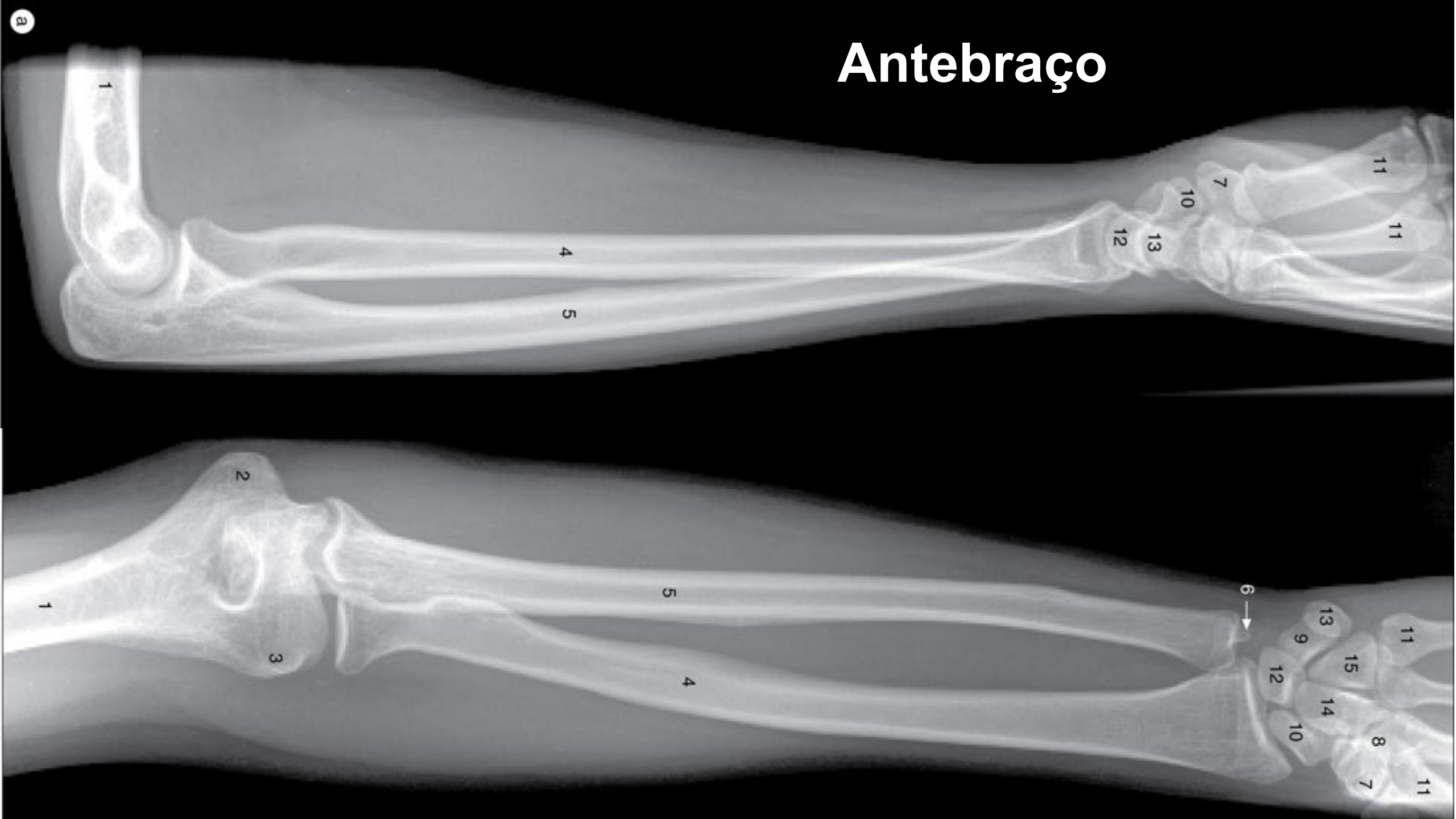


Cotovelo

Cotovelo, imagens de RM sagitais, de medial a lateral.

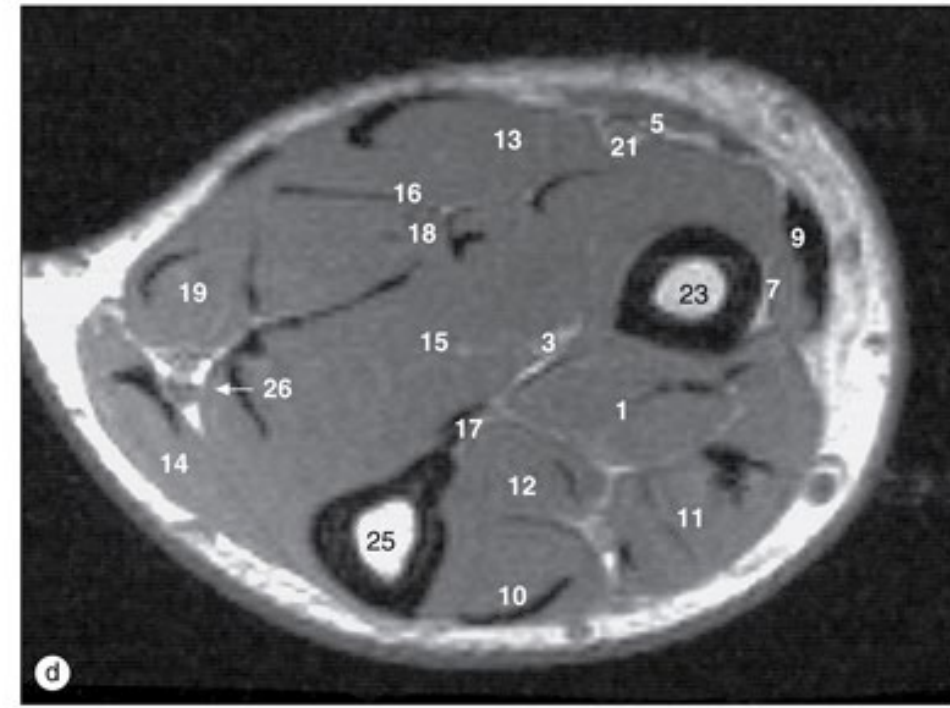
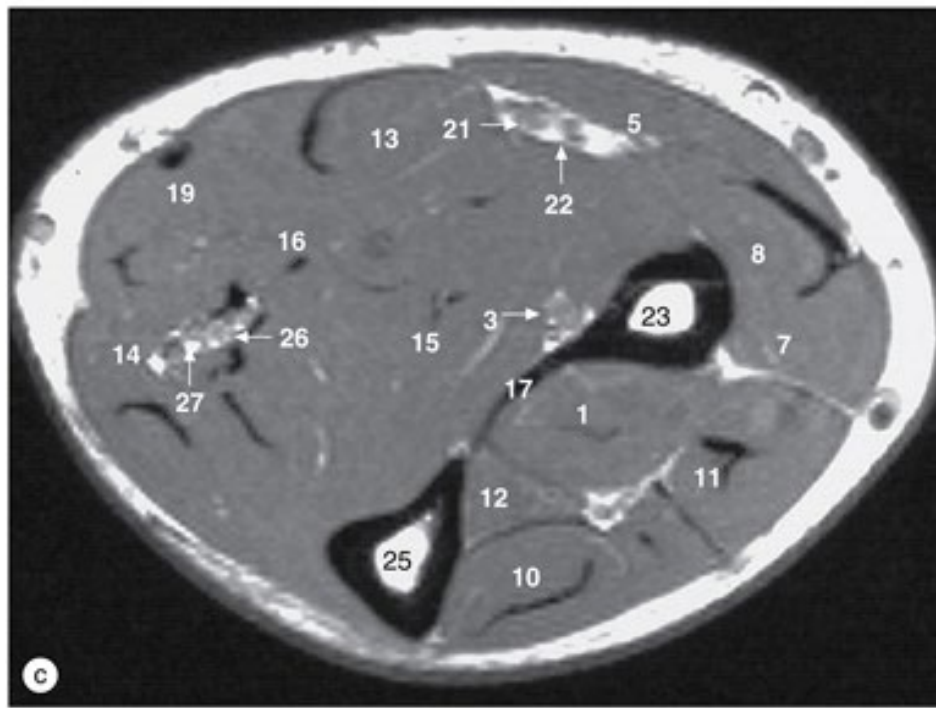
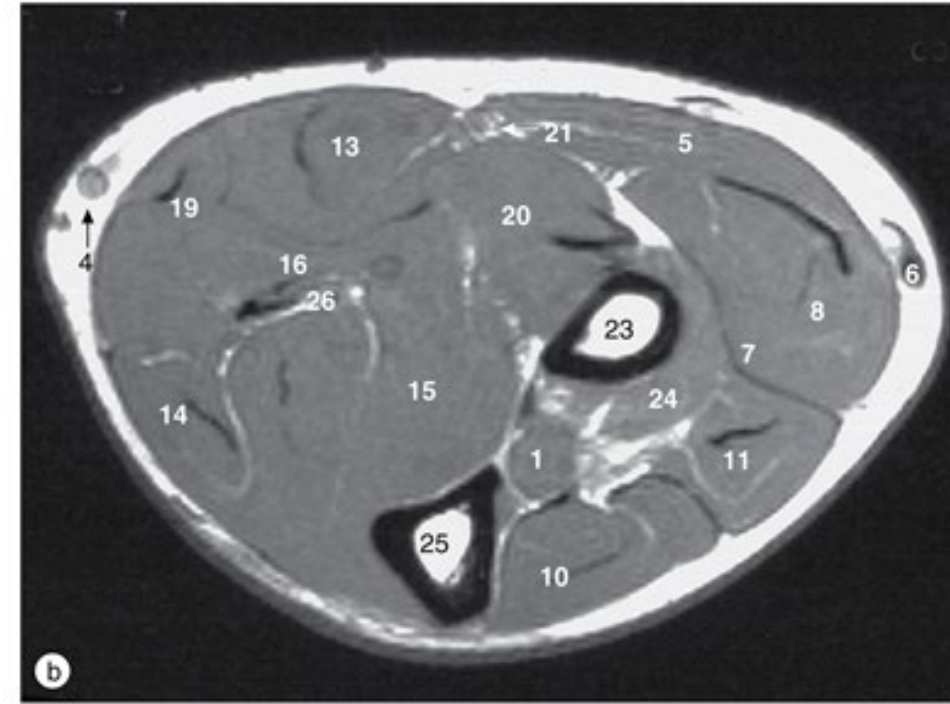
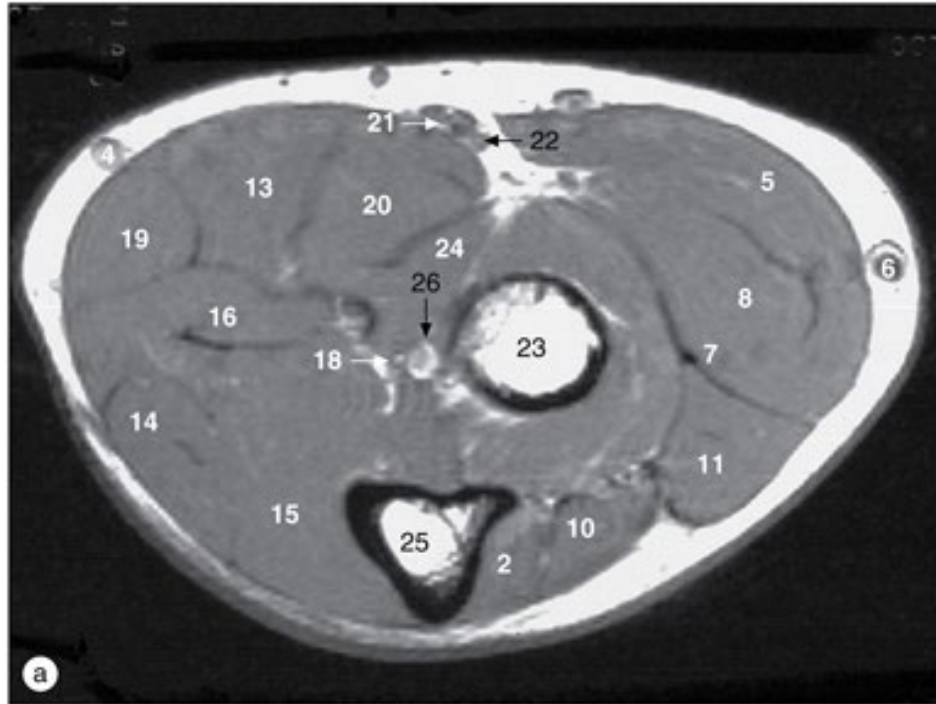


Antebraço

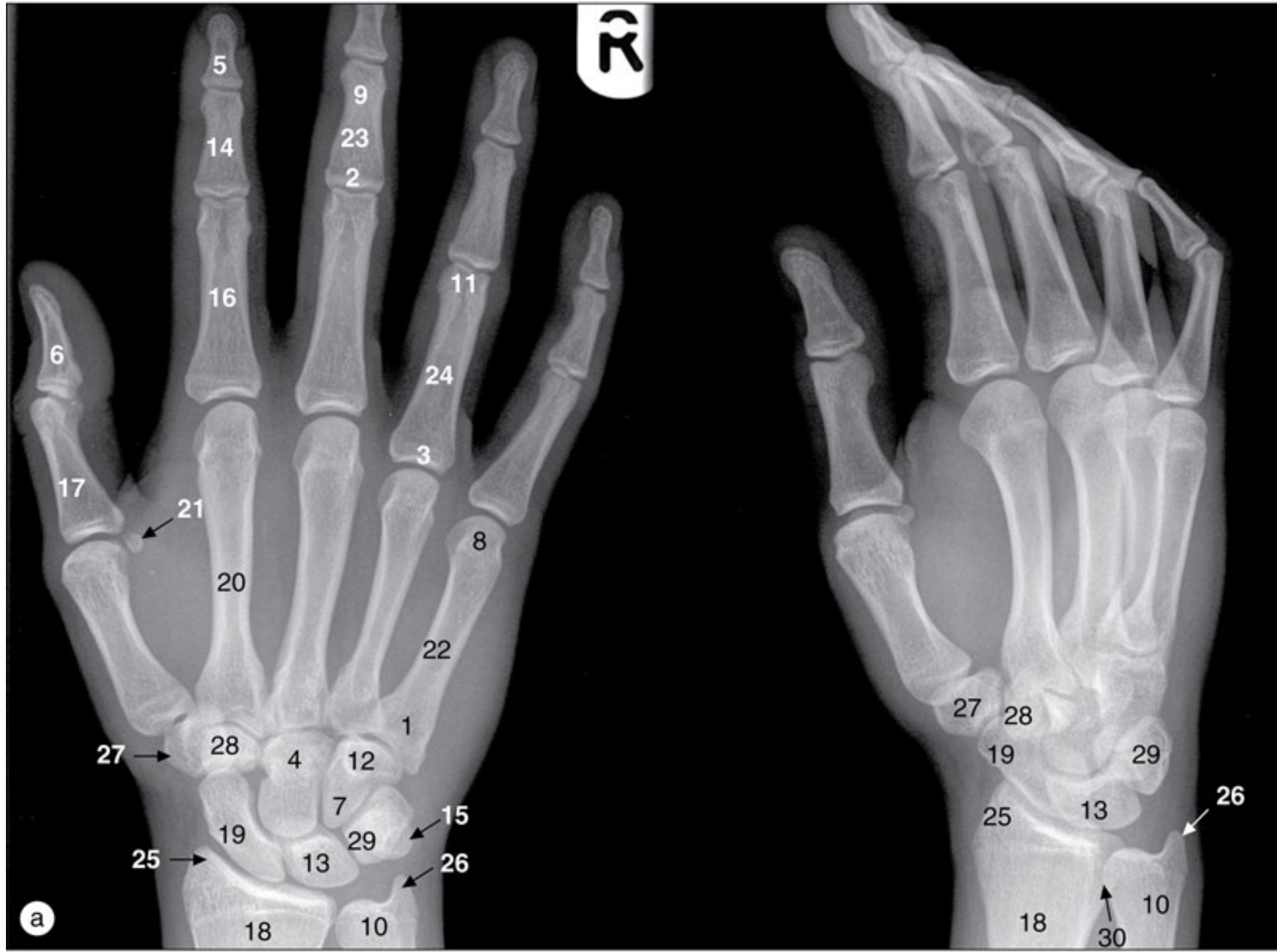


Antebraço

(a)–(d) Antebraço, imagens de RM axiais, de superior a inferior.

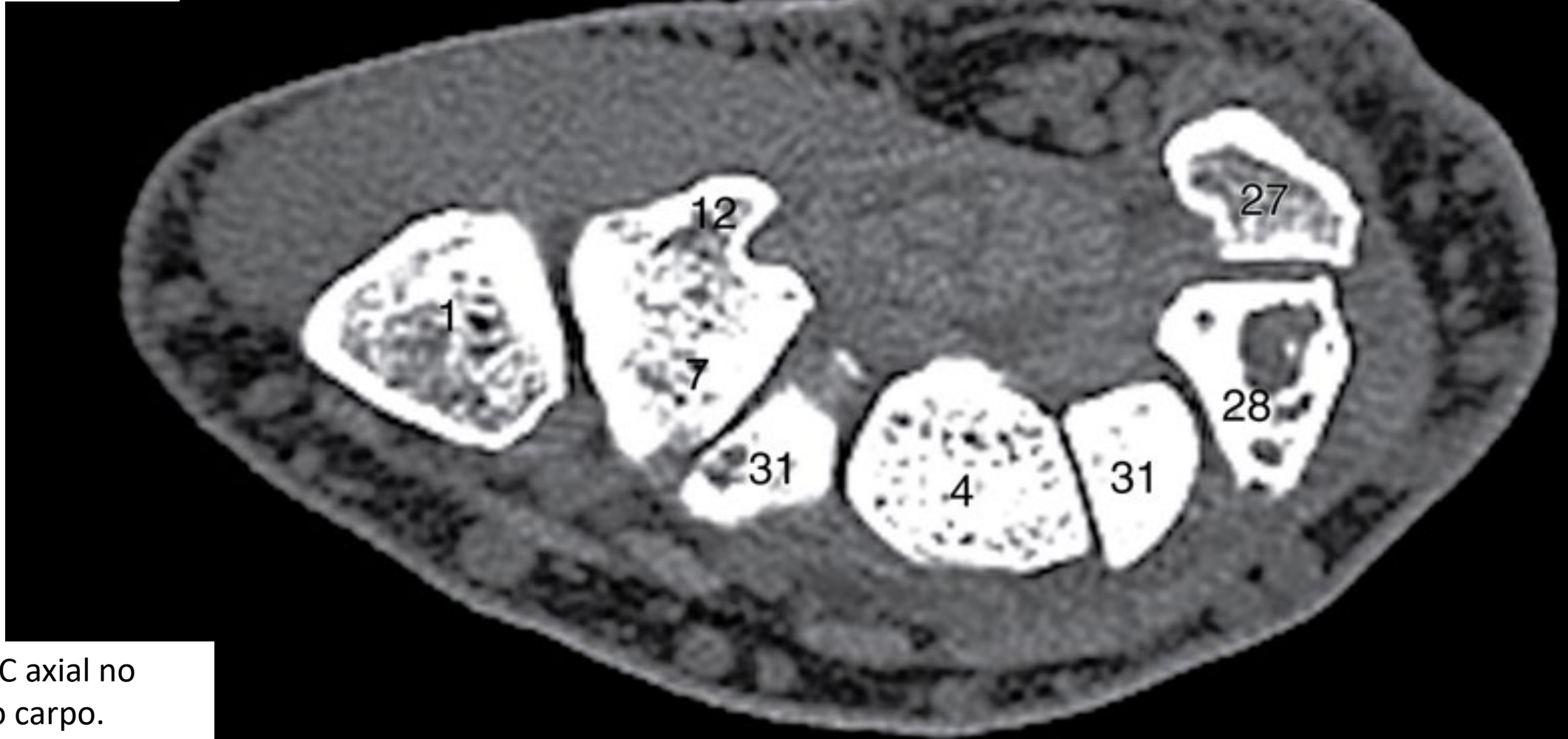


Punho e mão



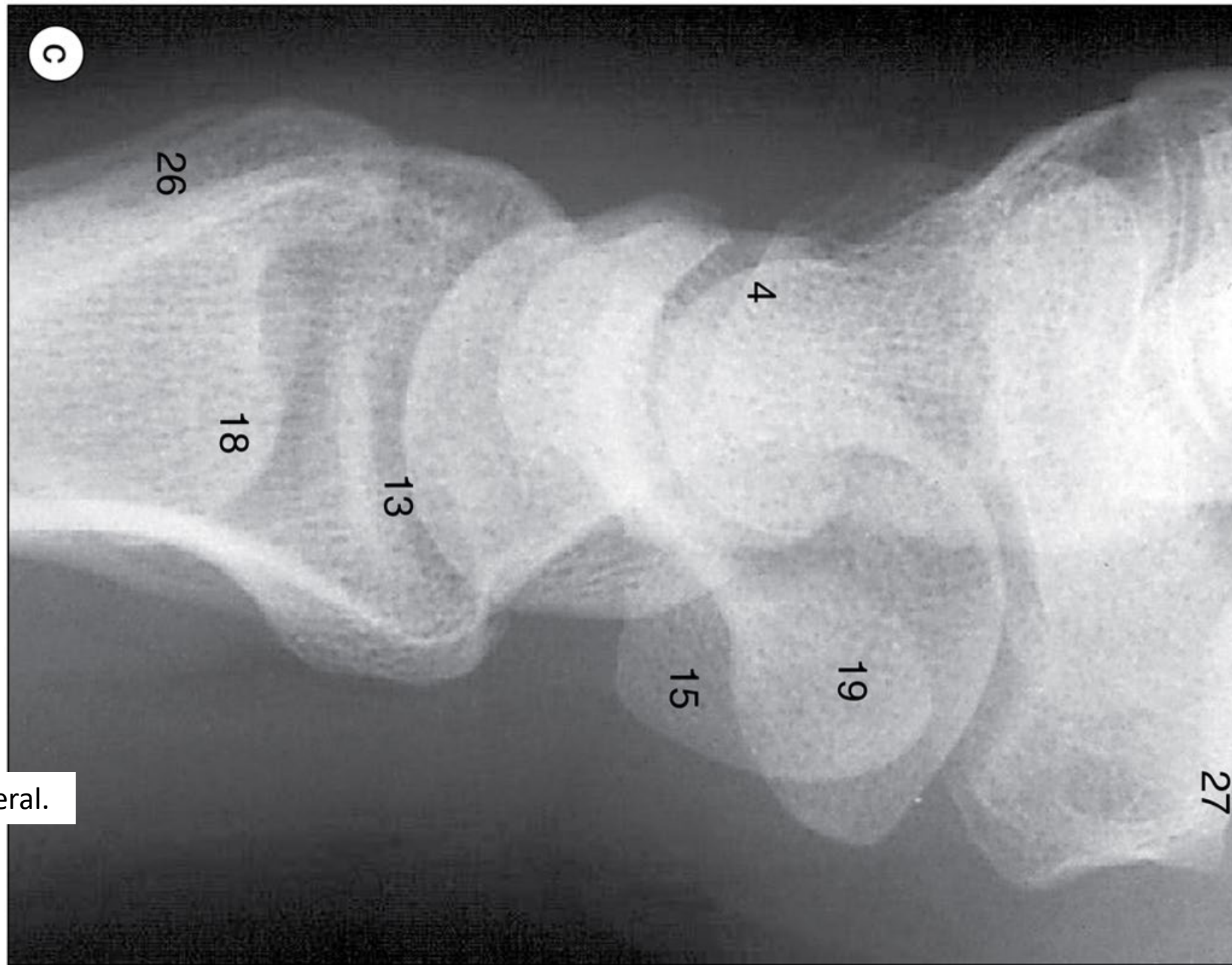
(a) Ossos da mão, radiografias posteroanterior e oblíqua.

Punho e mão



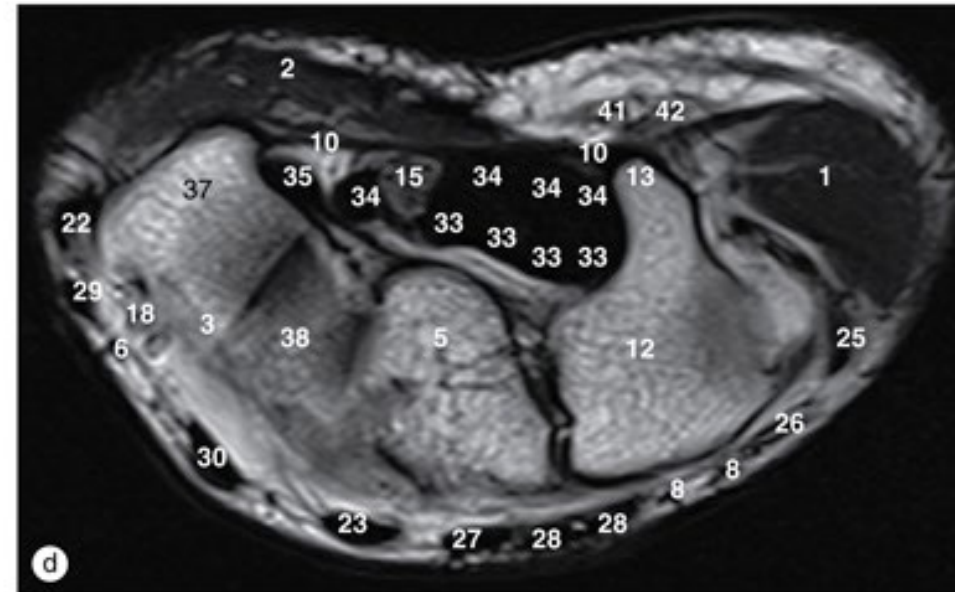
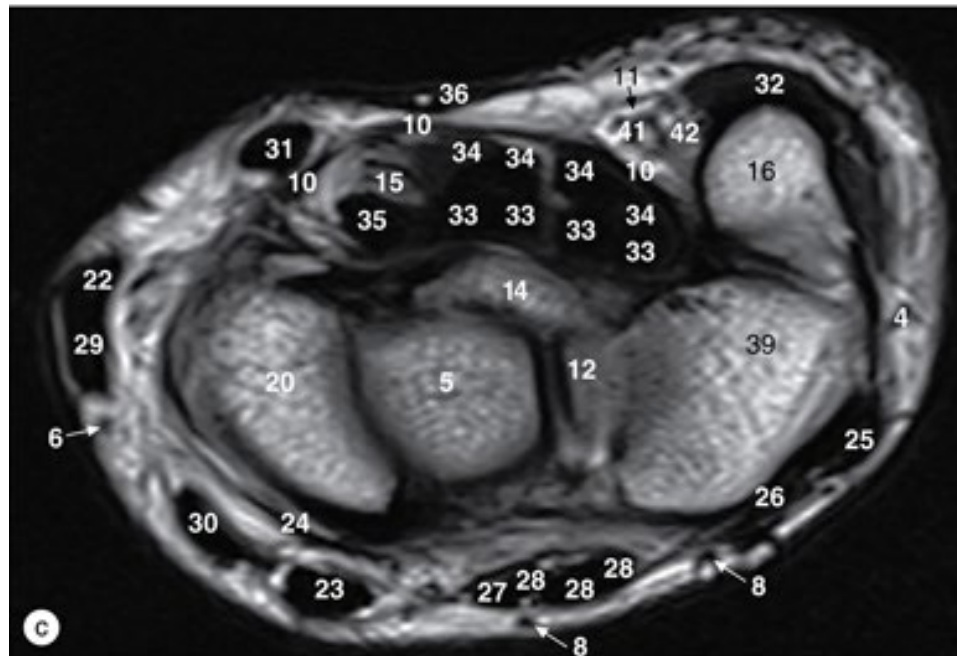
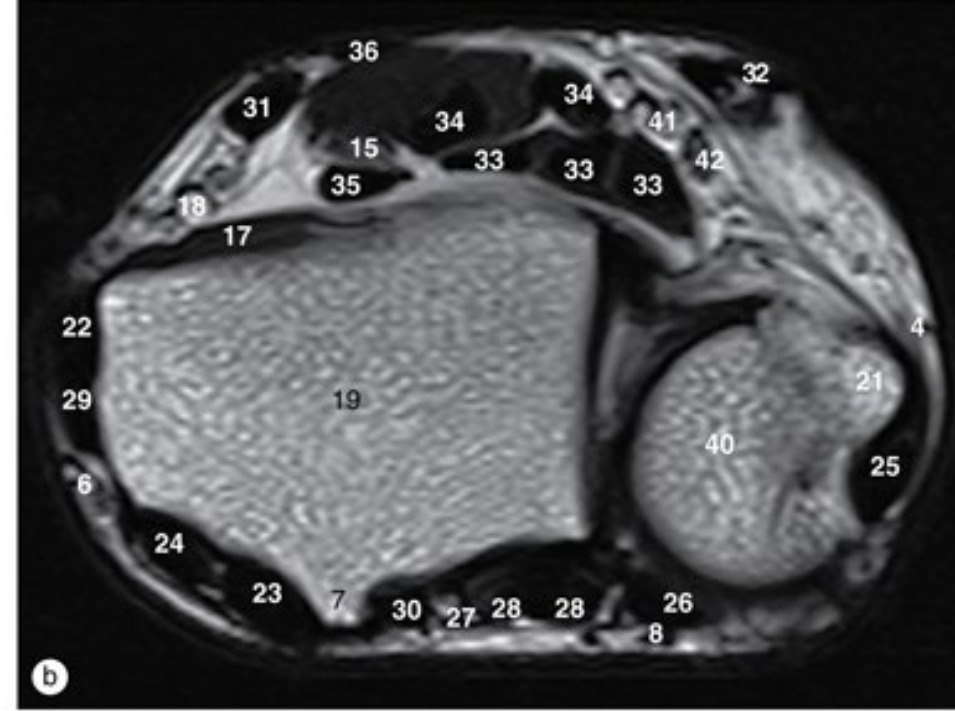
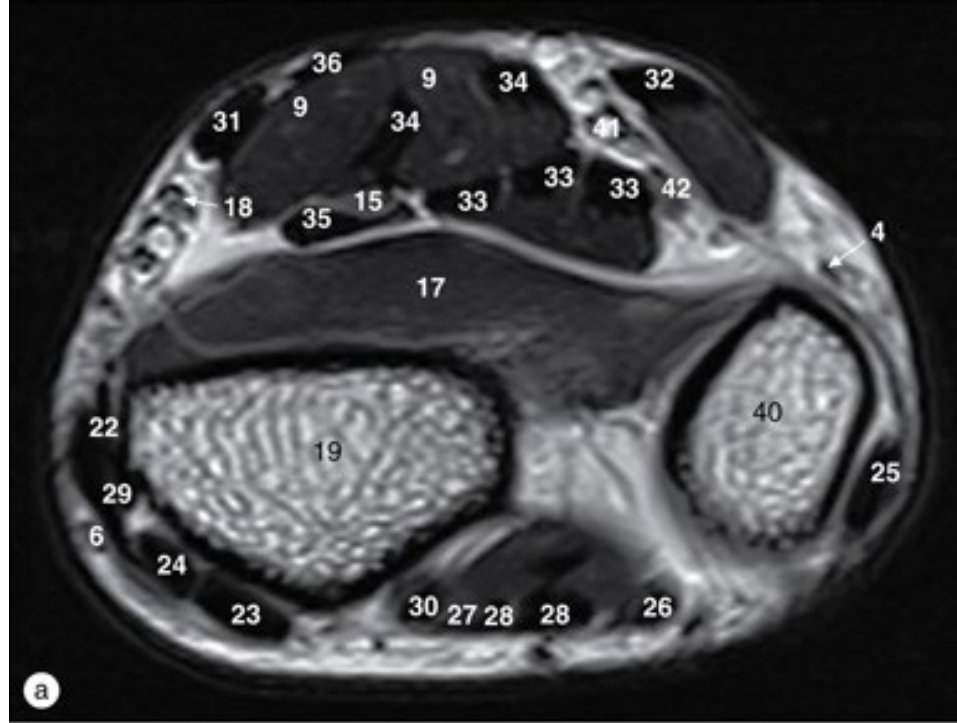
(b) Imagem de TC axial no nível do túnel do carpo.

Punho



(c) Ossos do punho, radiografia lateral.

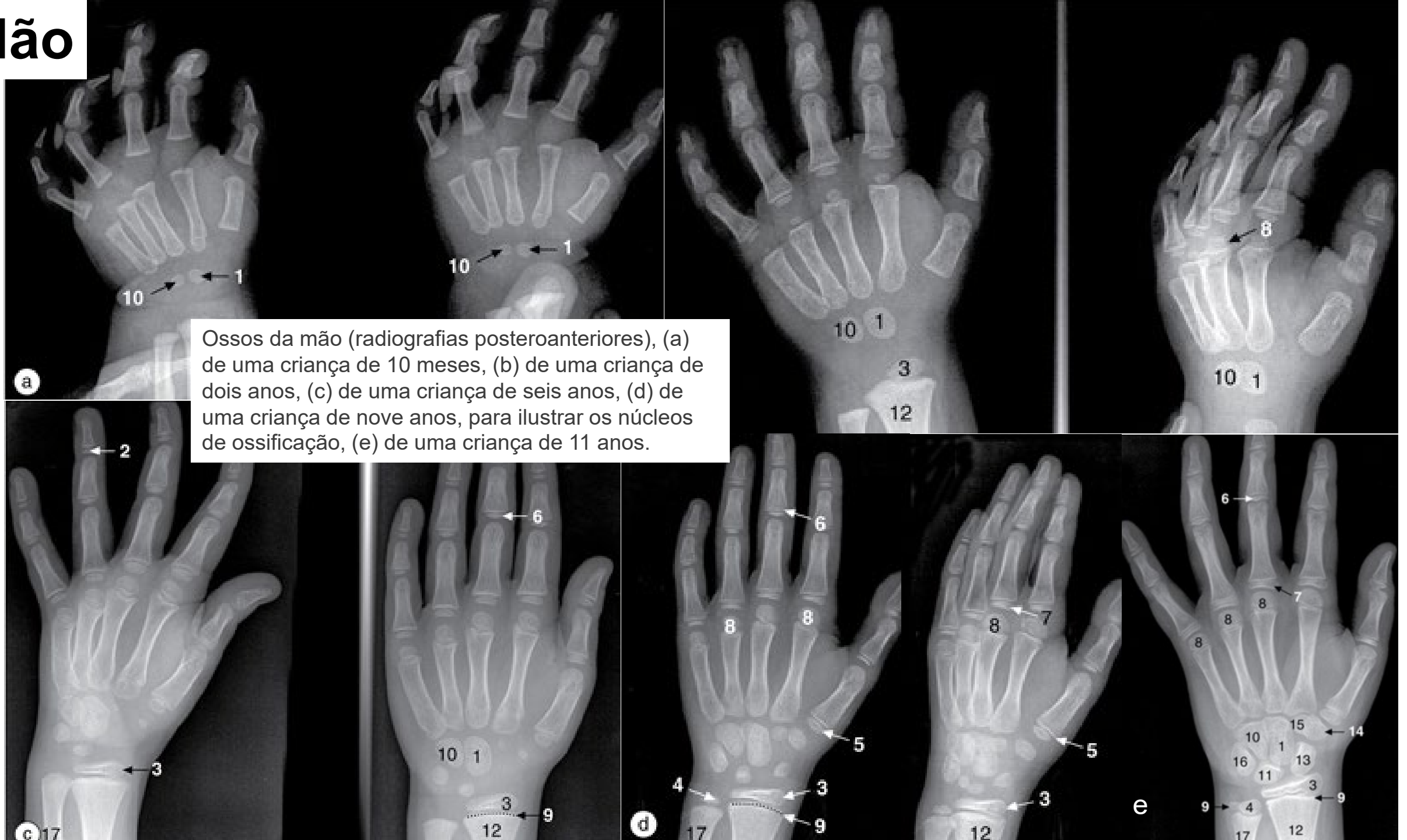
Punho



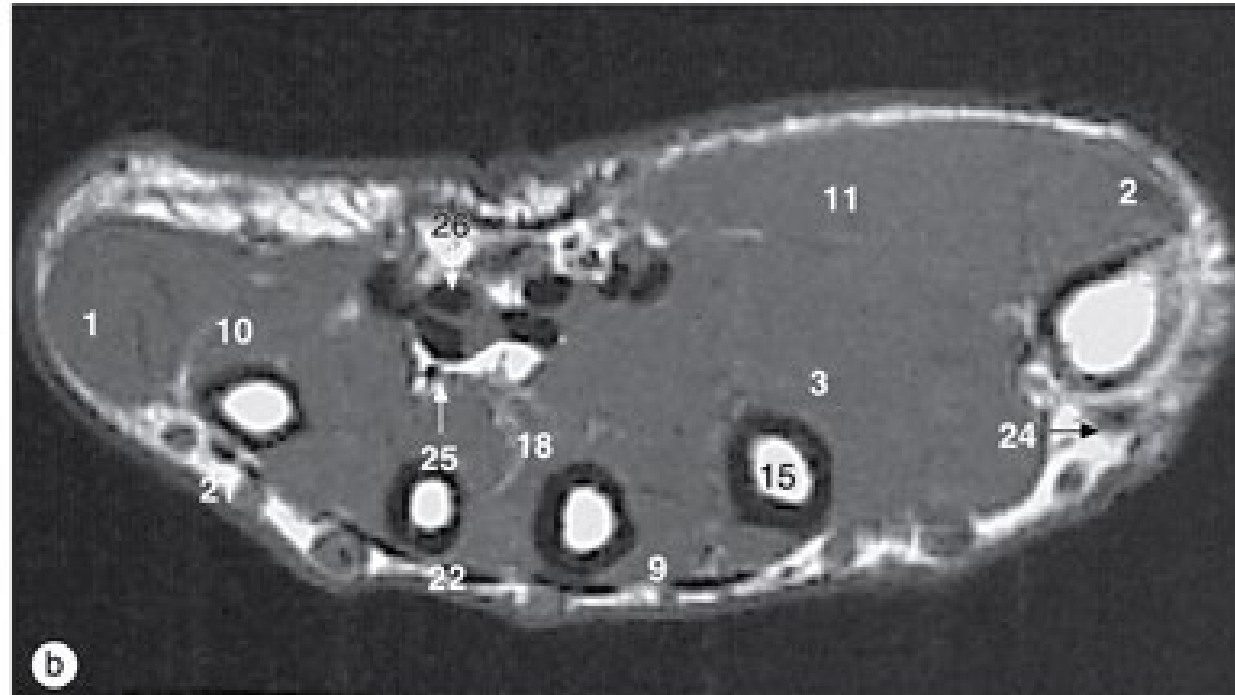
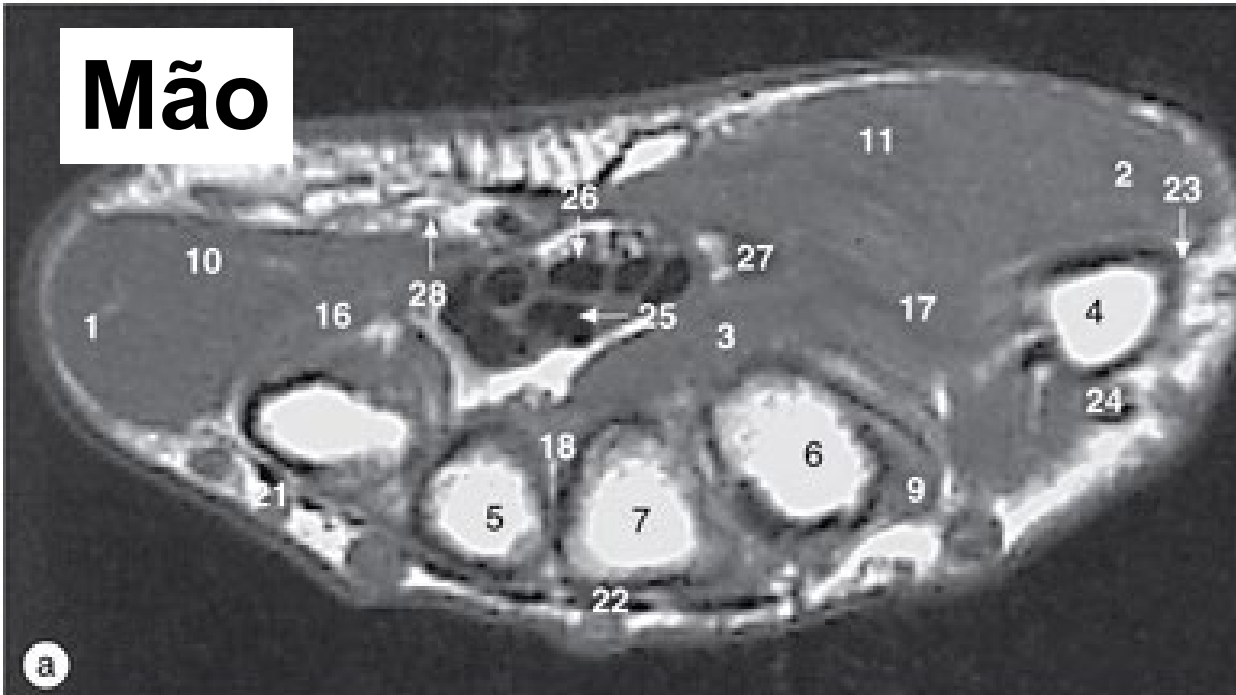
Punho, imagens de RM axiais, de superior a inferior.

22/05/2020

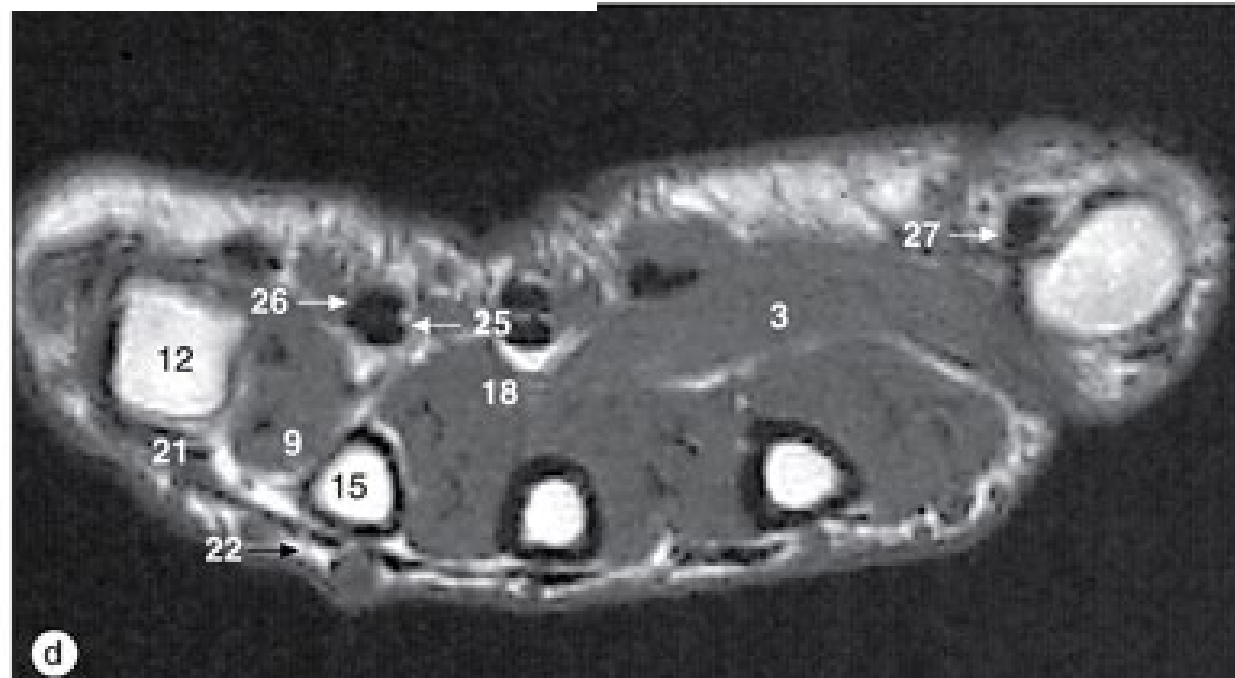
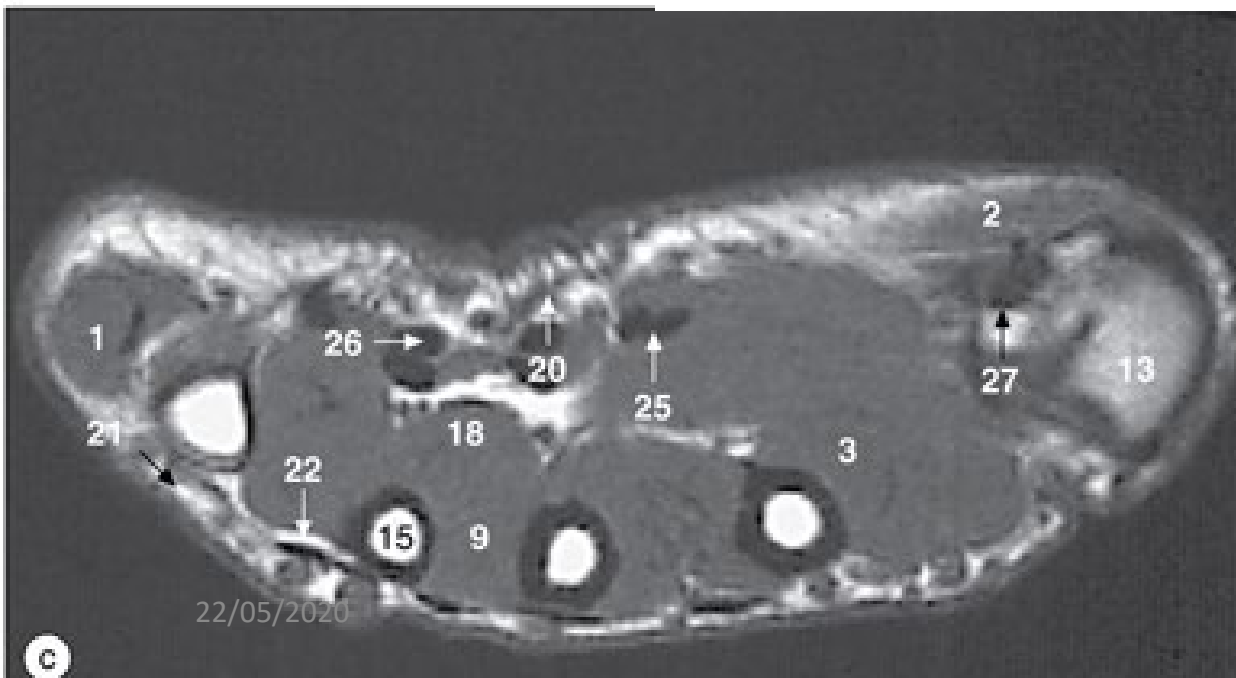
Mão



Mão



(a)-(d) Mão, imagens de RM axiais, de superior a inferior.

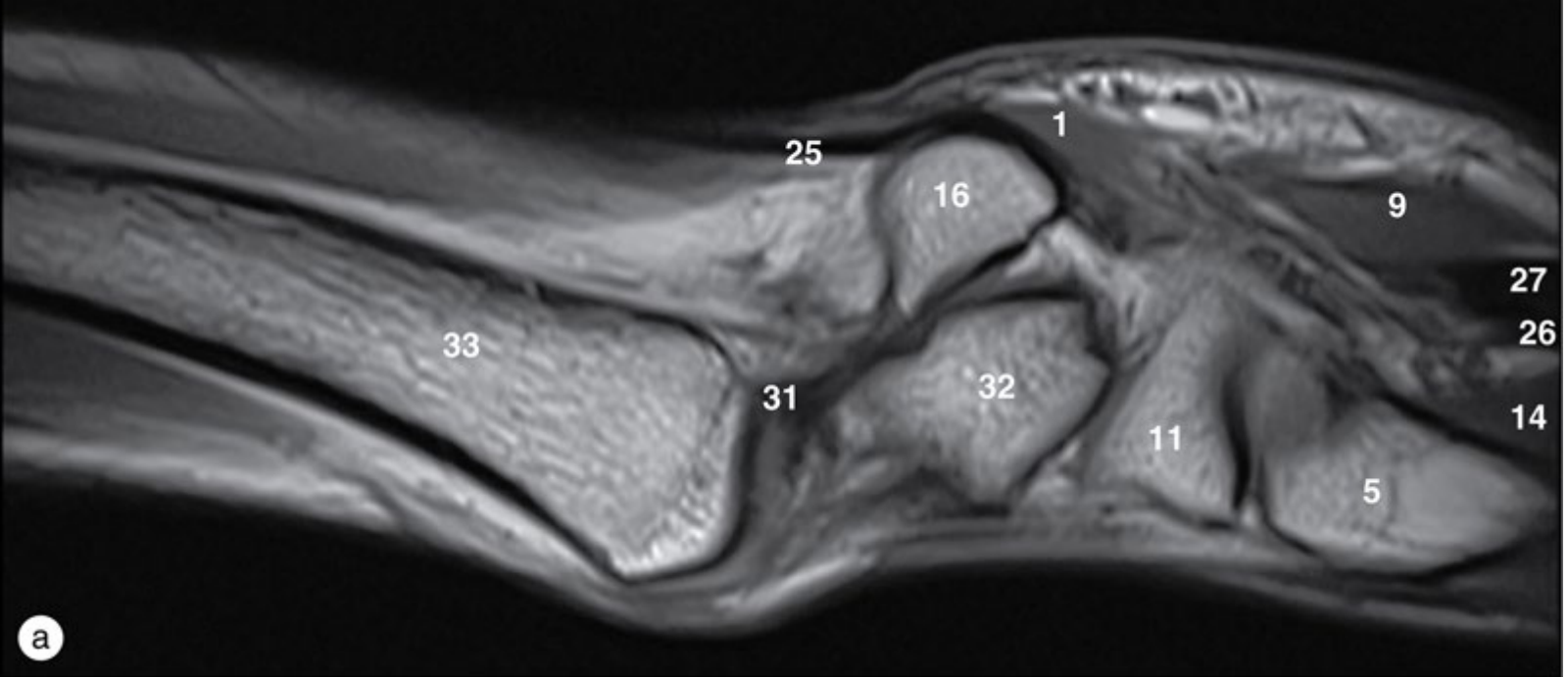




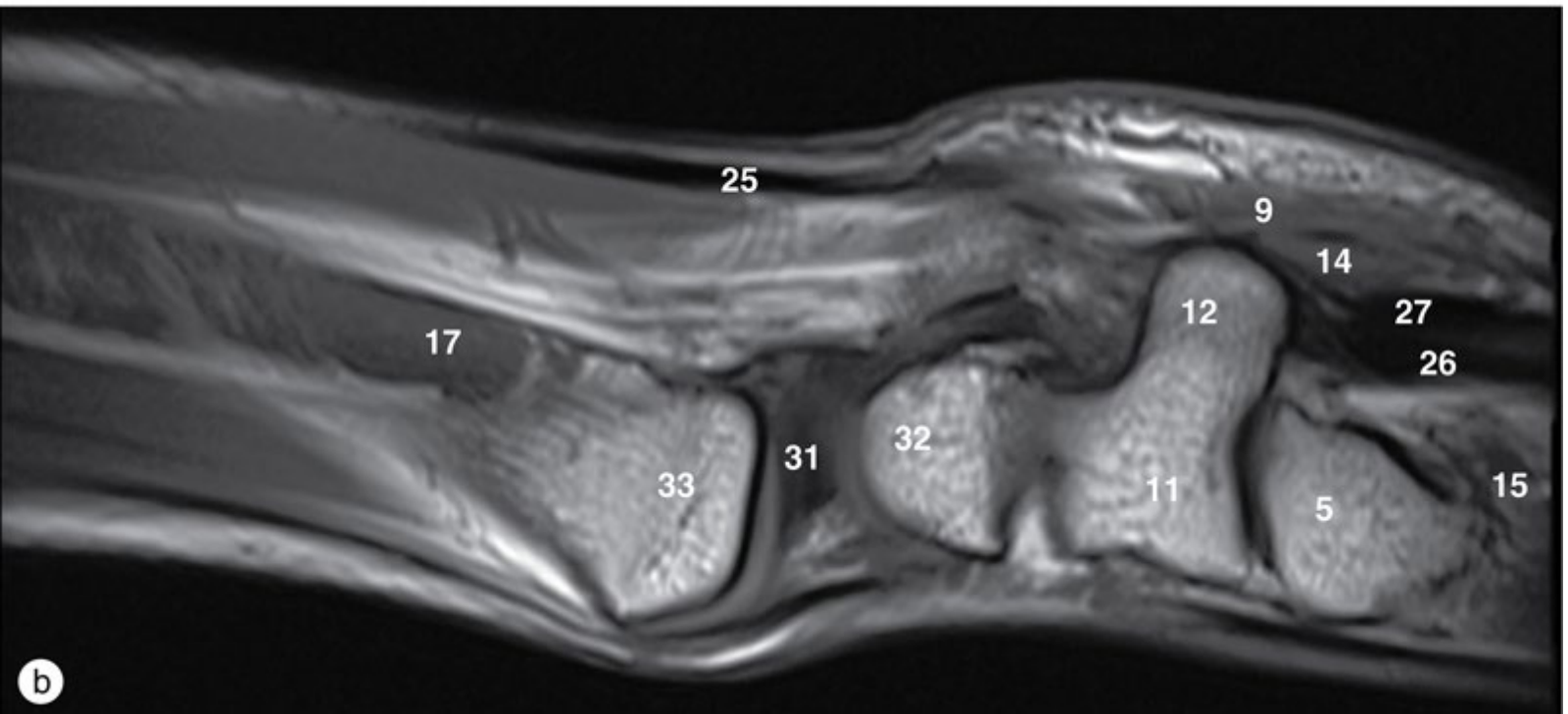
a Punho, imagens de RM coronais, de anterior a posterior.



b



a

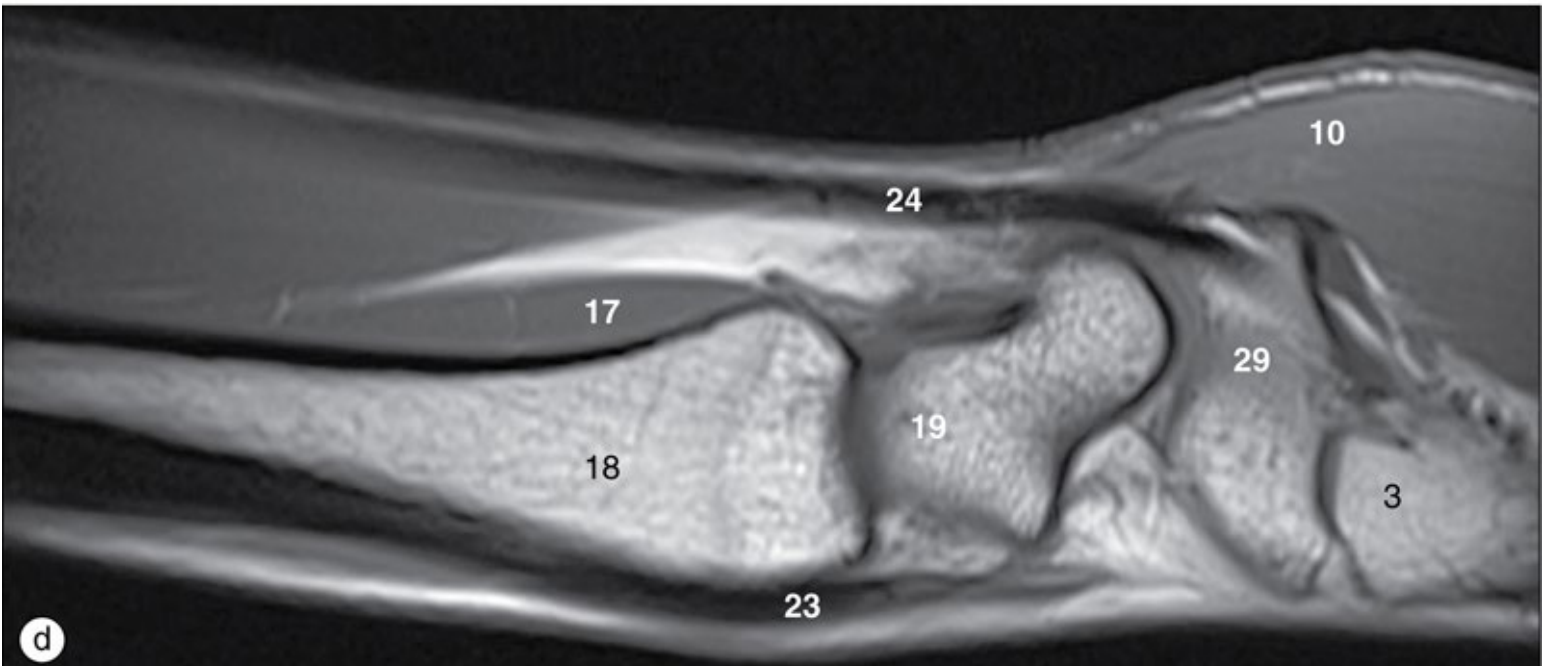
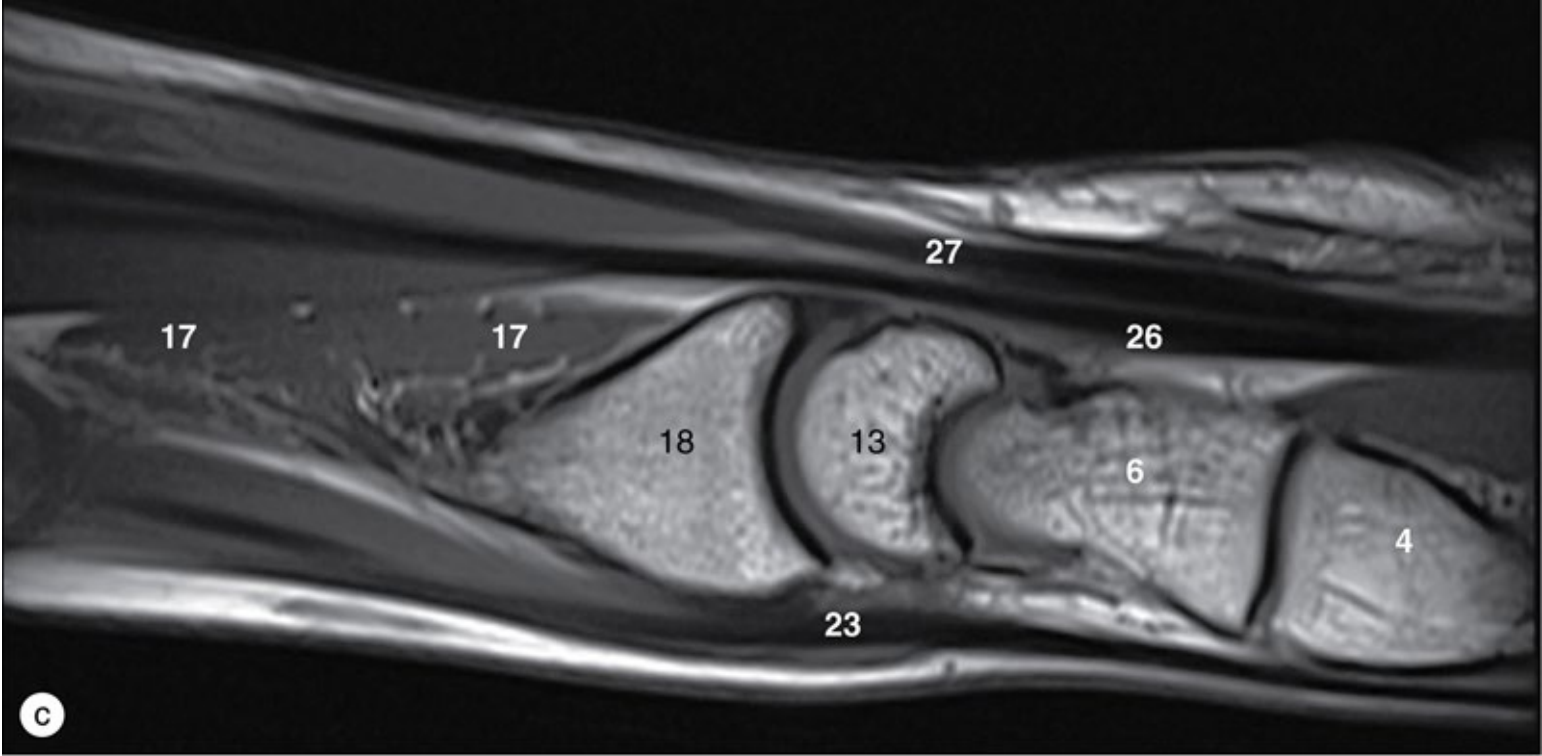


b

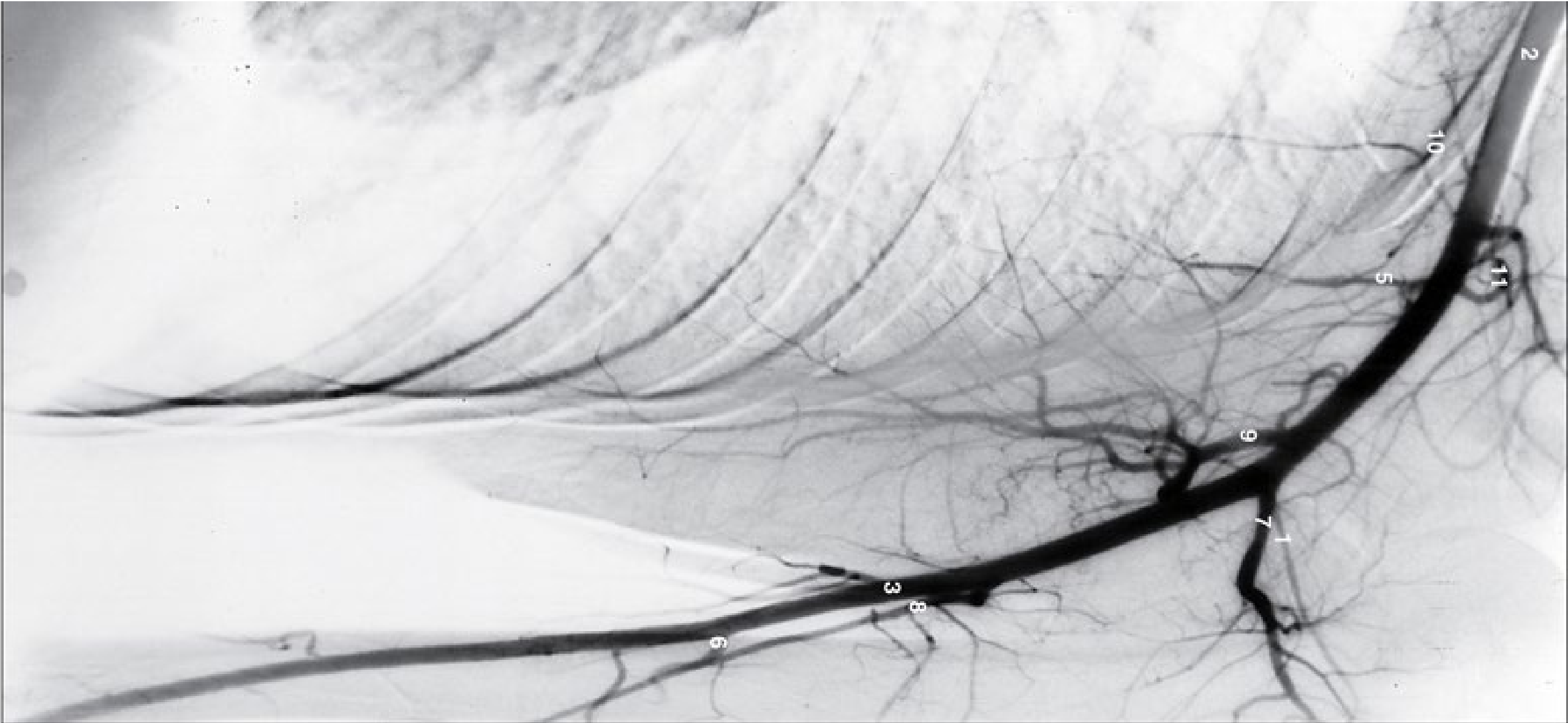
Punho, imagens de RM sagitais, de medial a lateral.

Punho, imagens de RM sagitais,
de medial a lateral.

22/05/2020

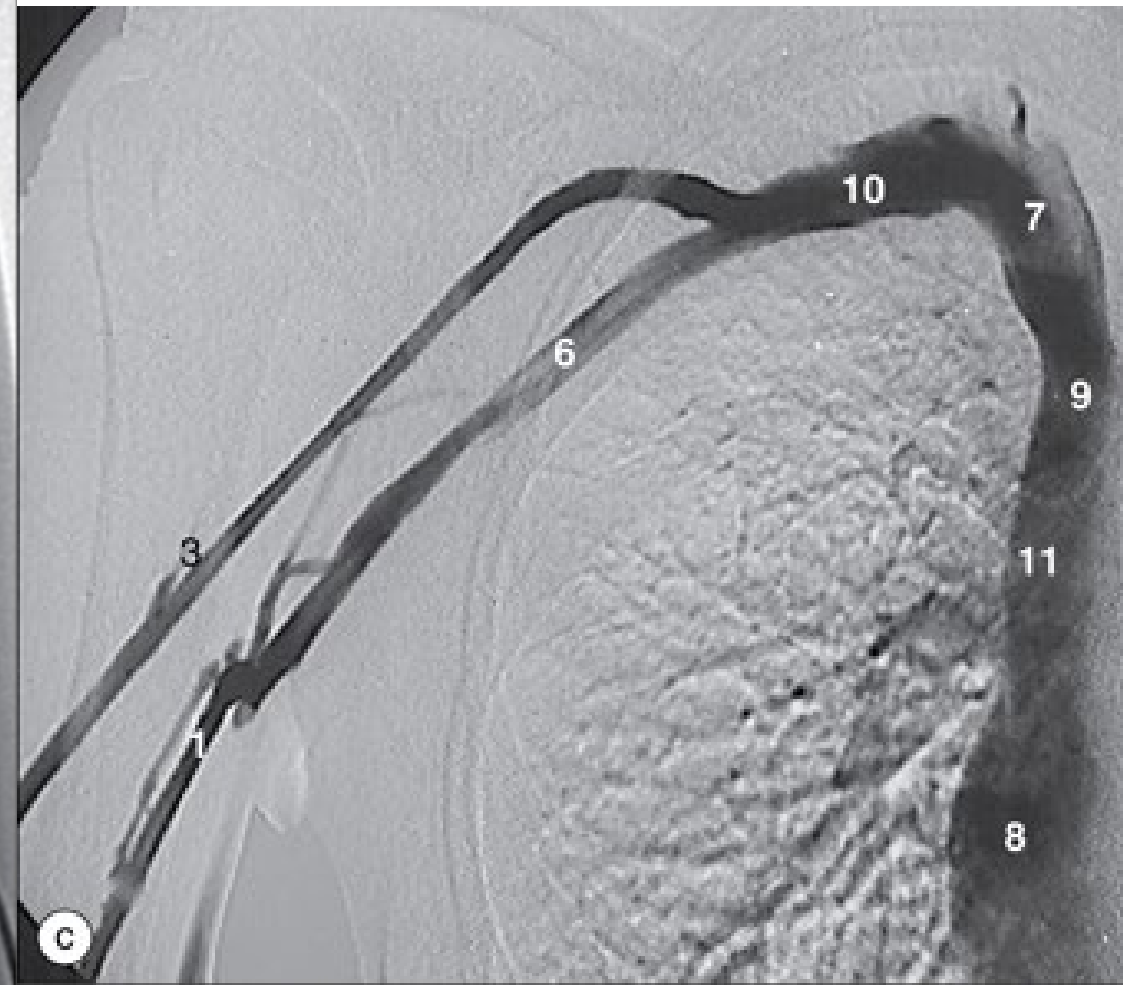
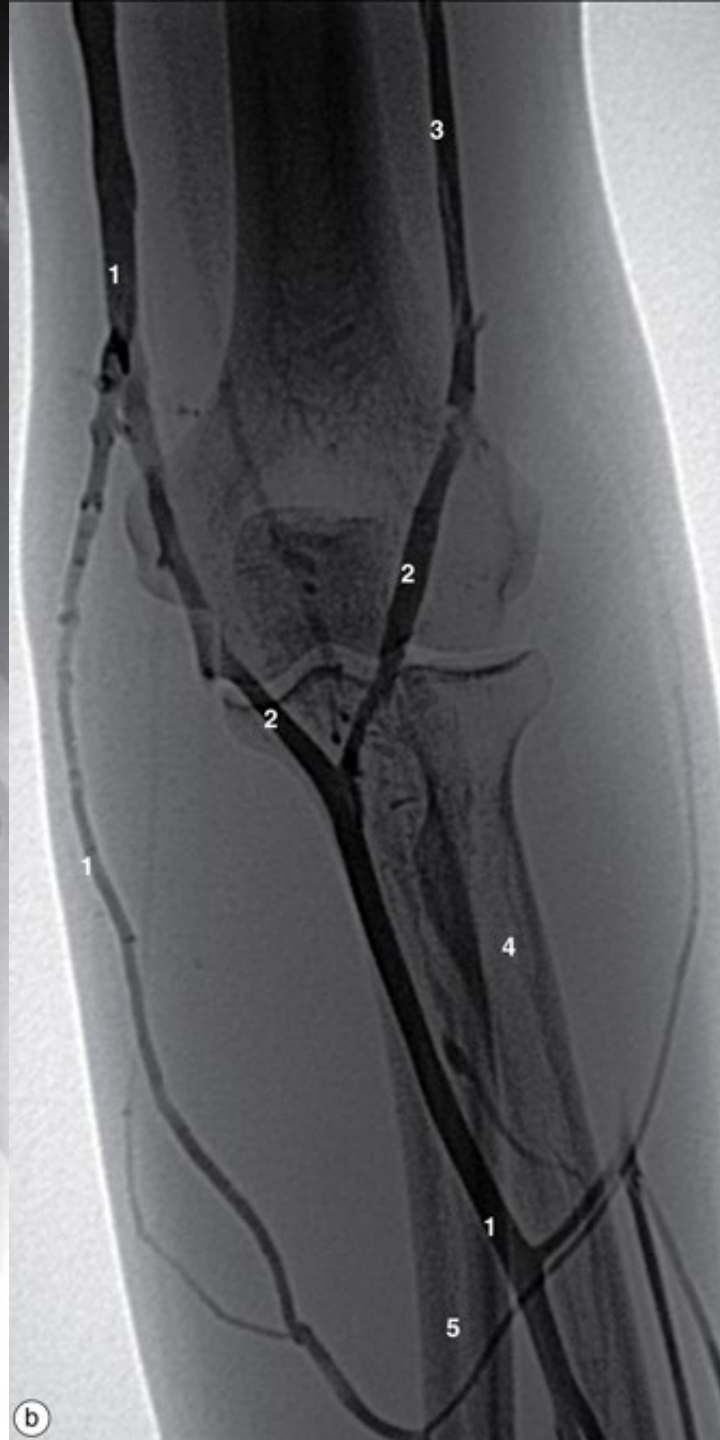
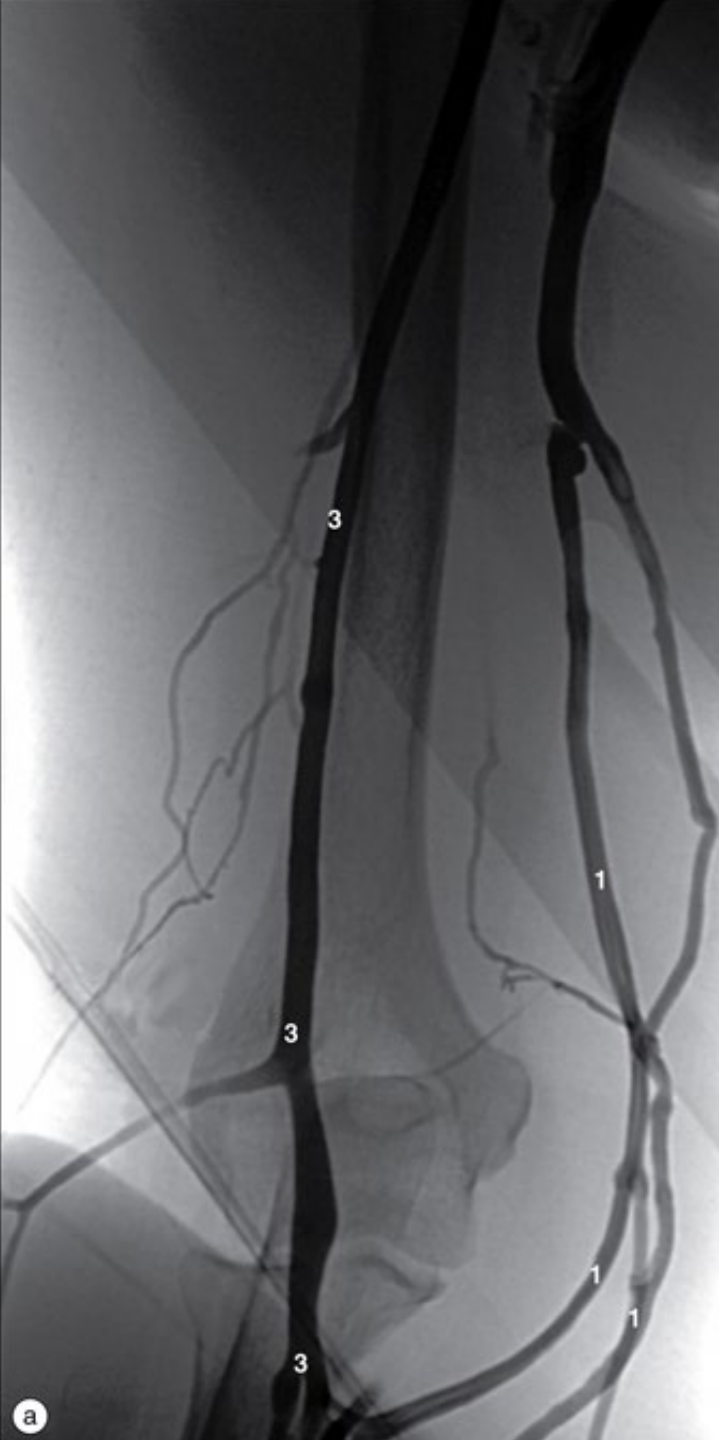


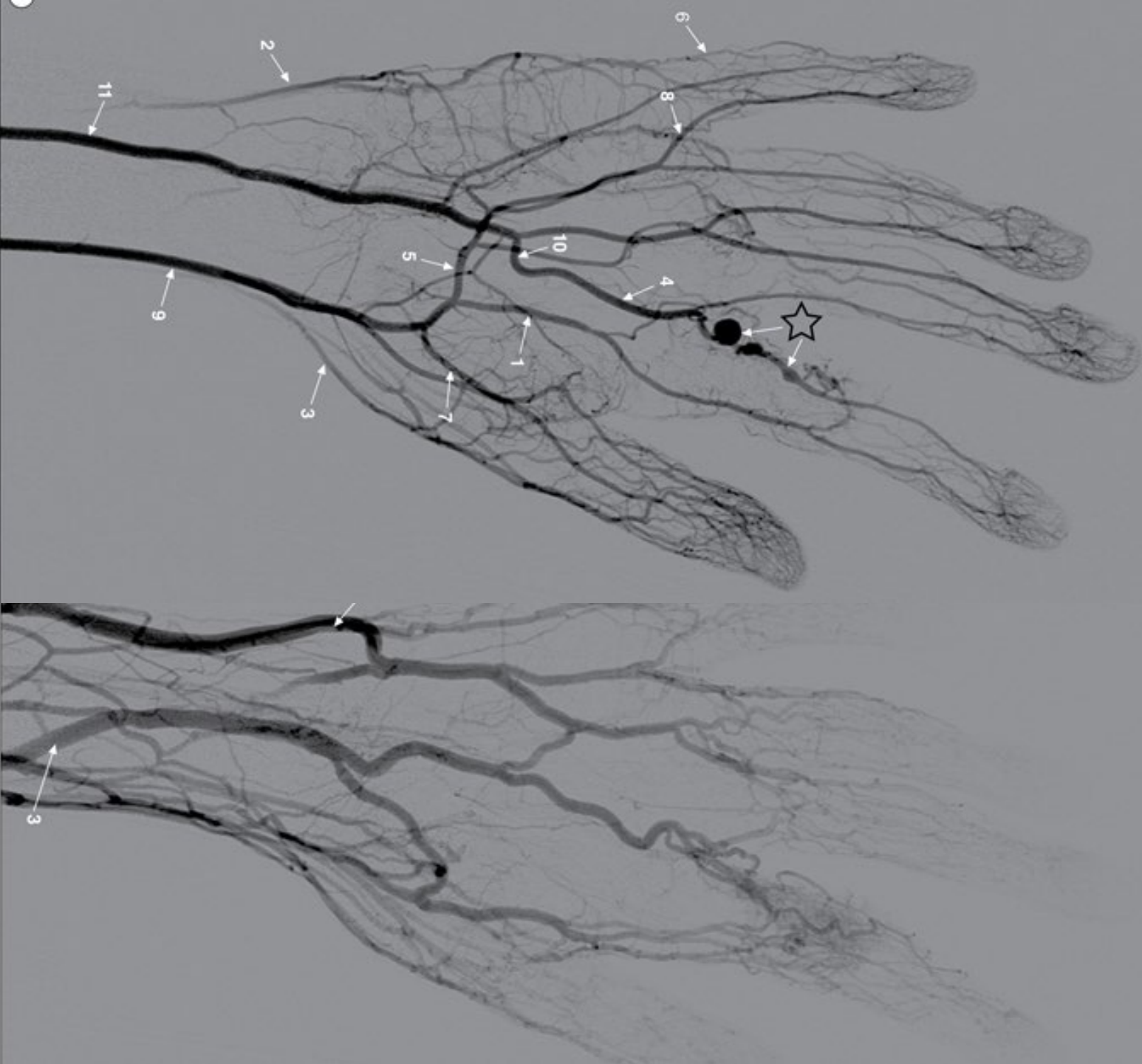
Vasos do membro superior



Vasos do membro superior

(a) e (b) Venografias do membro superior, (c) flebografia da veia cava superior.





(a) Arteriografia da mão e (b) venografia (subtração digital). Notar o componente venoso de malformação arteriovenosa (não legendado) na figura (b).

☆. Malformação arteriovenosa da artéria digital do dedo indicador



UniSALESIANO

