



# ANATOMIA E PATOLOGIA EM IMAGENS

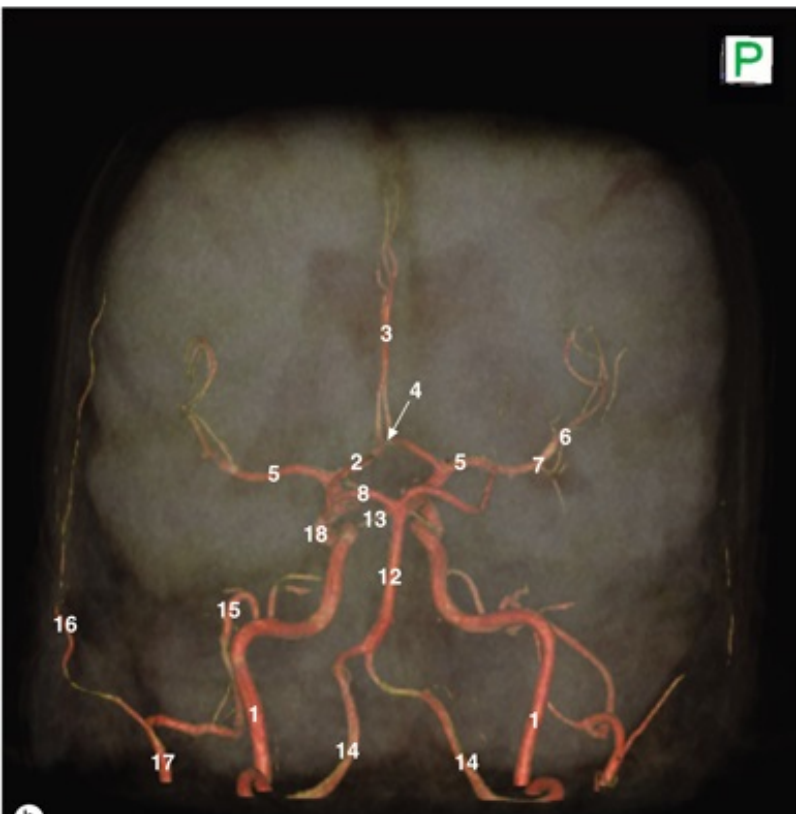
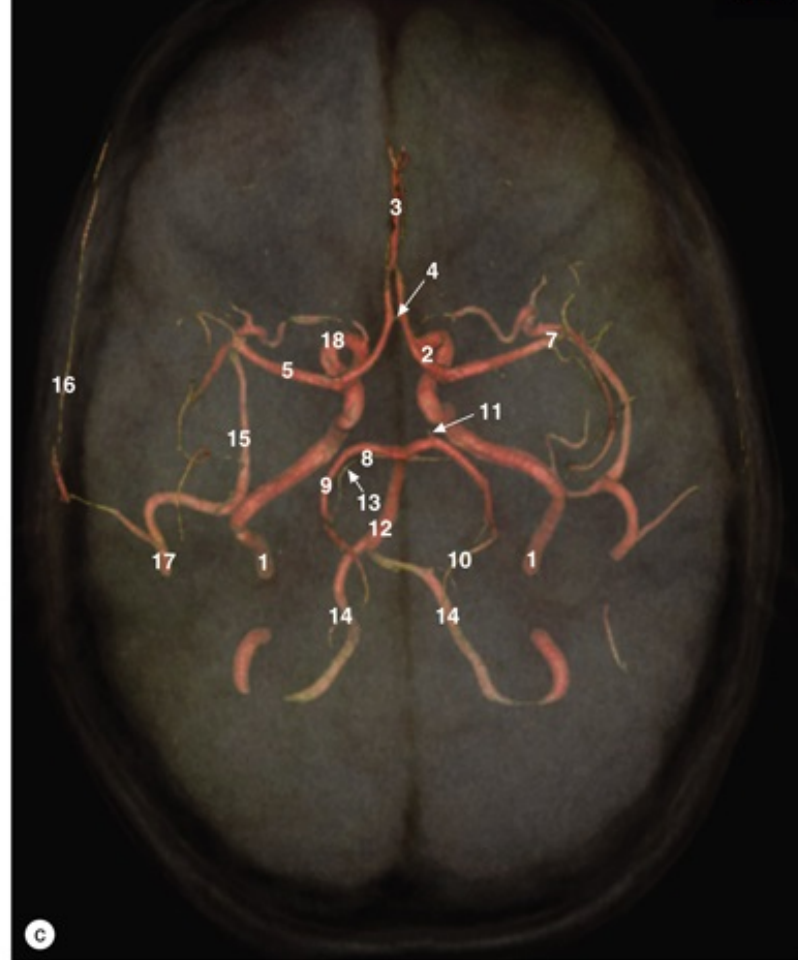
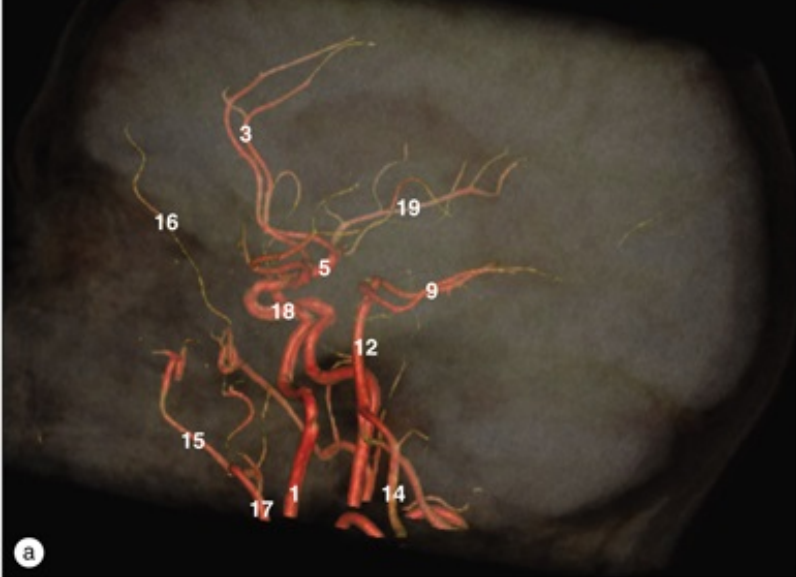
PROF FERNANDO HENRIQUE ALVES  
BENEDITO

# Exames de imagens

- Encéfalo
- Crânio
- Pescoço
- Coluna vertebral
- Membro superior
- Mama e axila
- Tórax, Pulmões, mediastino
- Vasos do coração
- Abdome
- Pelve
- Ultrassonografia do abdome superior
- Ultrassonografia de abdome e pelve
- Quadril
- Membros inferiores
- Exames funcionais

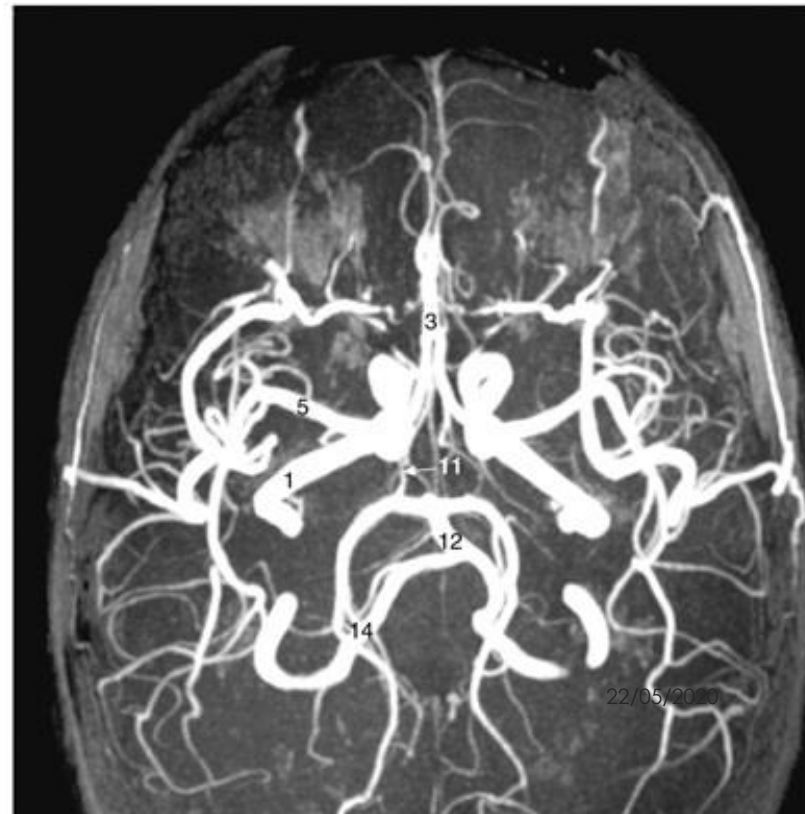
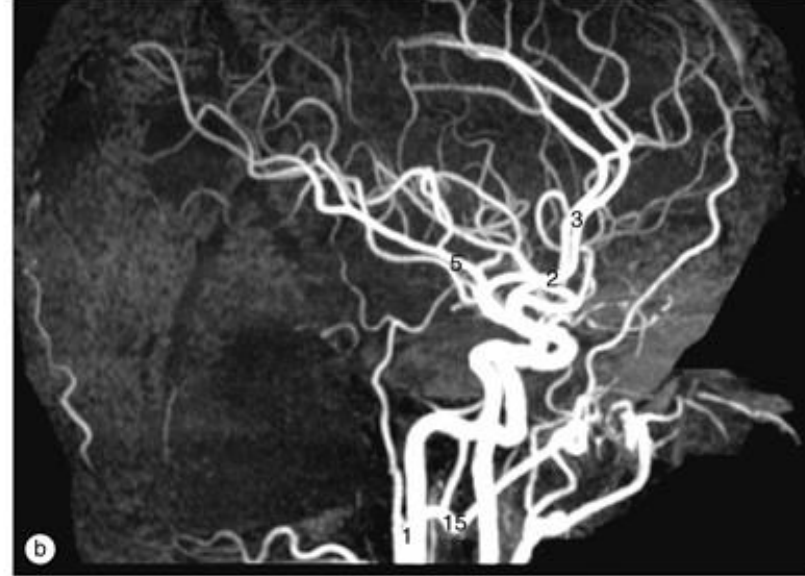
# Exames de imagens

- Encéfalo
- Crânio
- Pescoço
- Coluna vertebral
- Membro superior
- Mama e axila
- Tórax, Pulmões, mediastino
- Vasos do coração
- Abdome
- Pelve
- Ultrassonografia do abdome superior
- Ultrassonografia de abdome e pelve
- Quadril
- Membros inferiores
- Exames funcionais



# ENCÉFALO

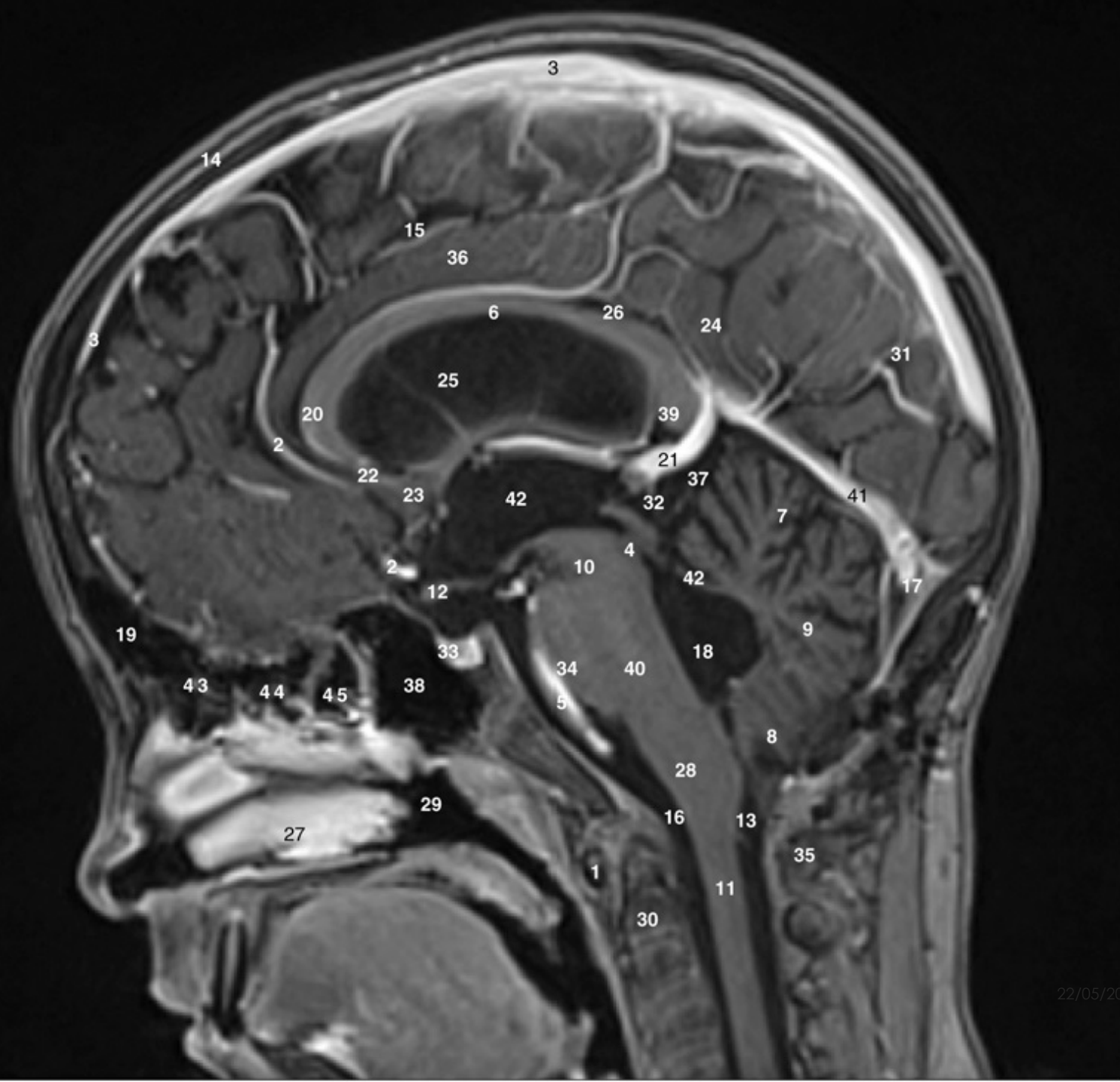
Encéfalo, angiografia por TC em 3D. (a) Lateral. (b) Occipitomentorial. (c) Círculo arterial do cérebro (Polígono de Willis).



# ENCÉFALO

Encéfalo, angiografia por RM. (a) Vista em rotação sagital. (b) Vista lateral. (c) Vista coronal. (d) Vista axial.





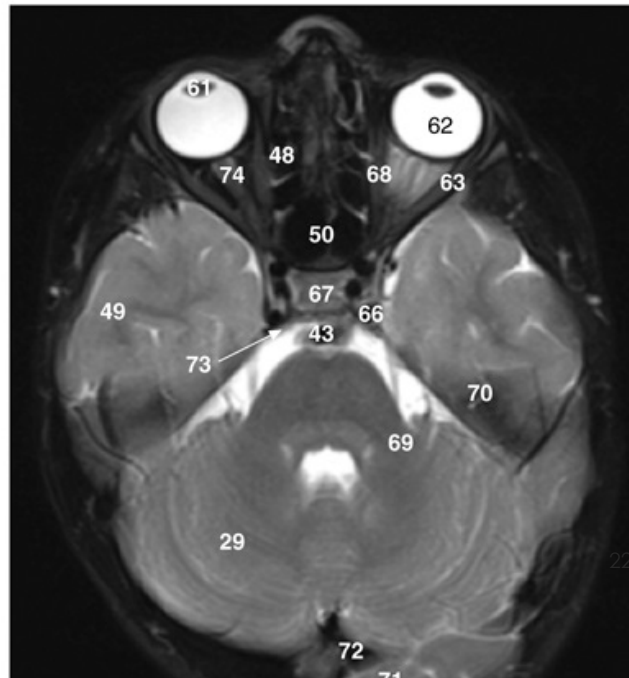
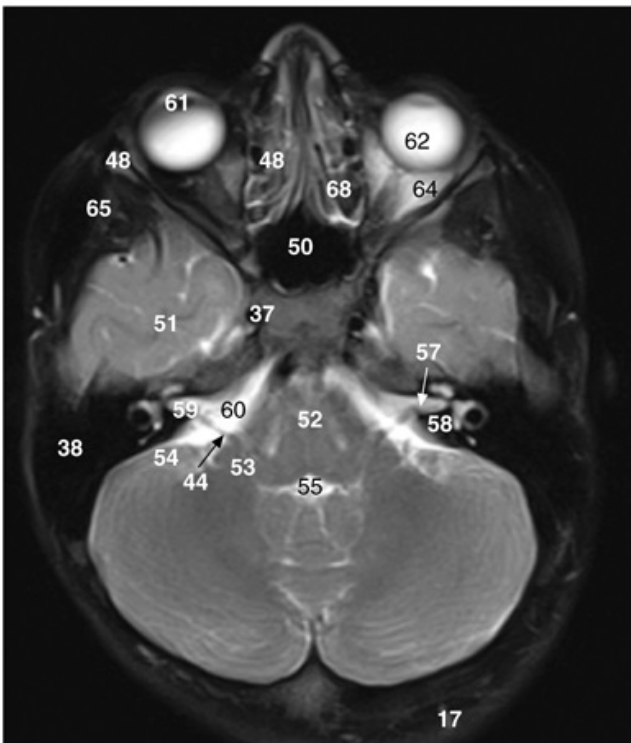
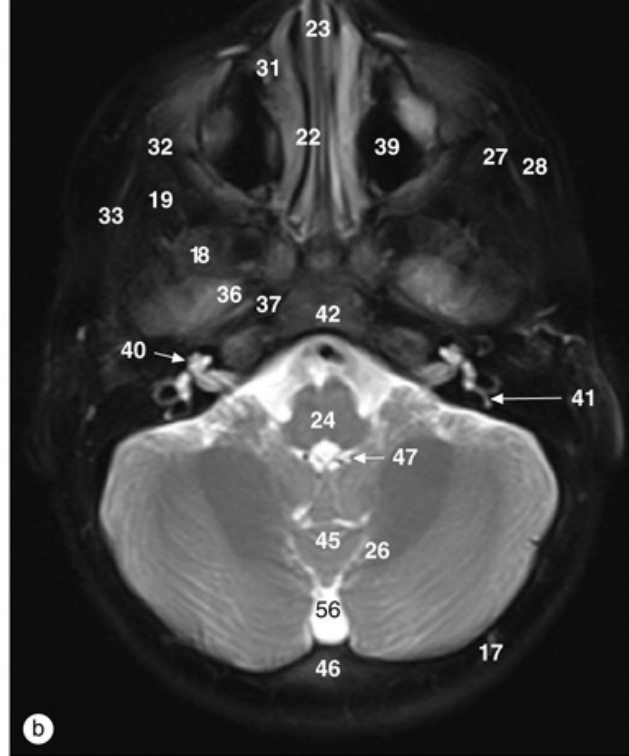
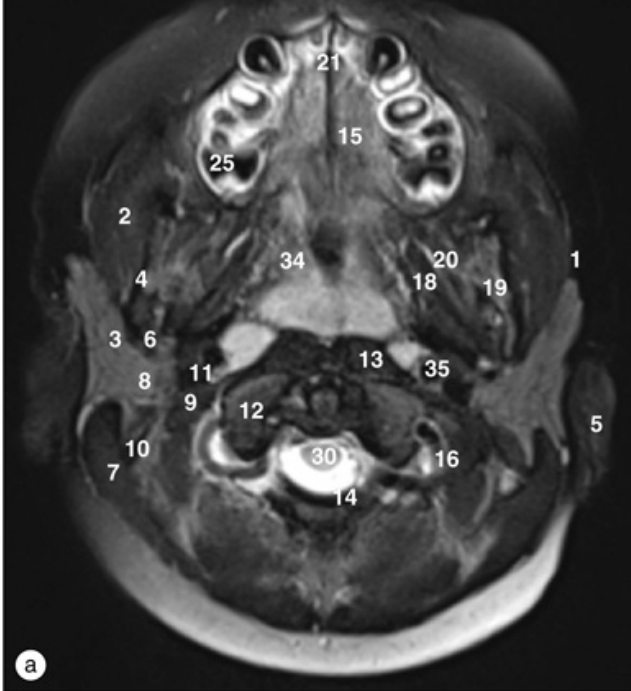
# ENCÉFALO

Encéfalo, imagem de RM mediosagital ponderada em T1, com meio de contraste.



# ENCÉFALO

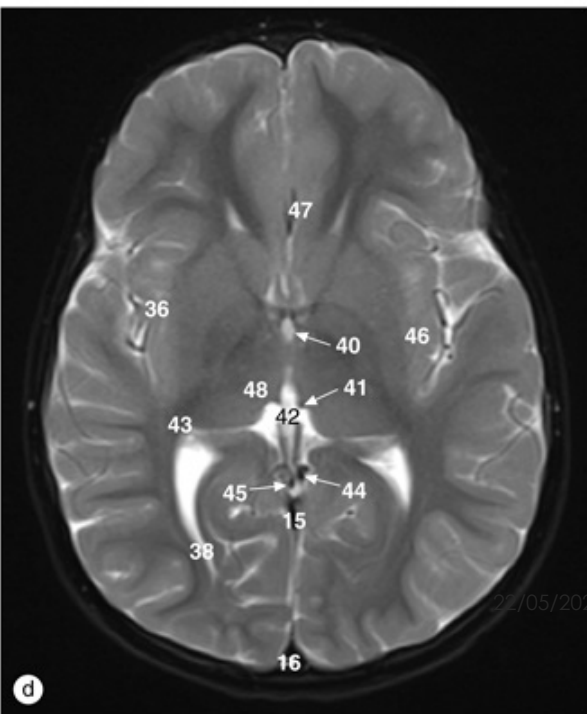
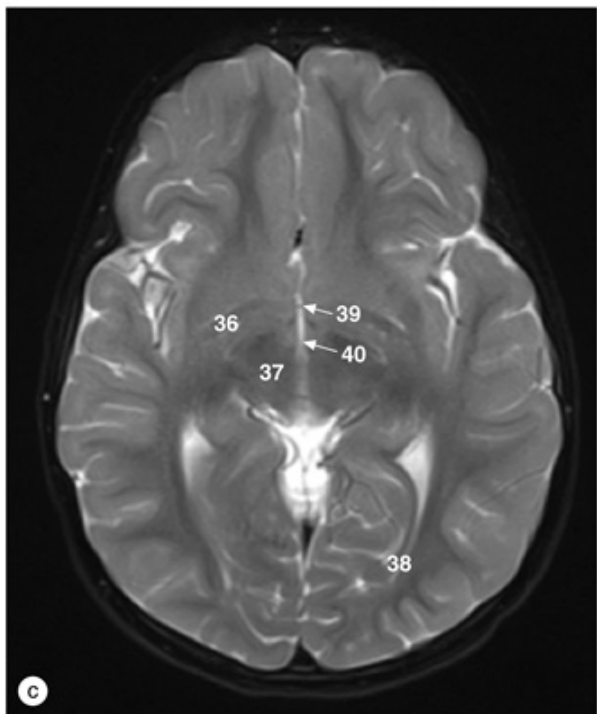
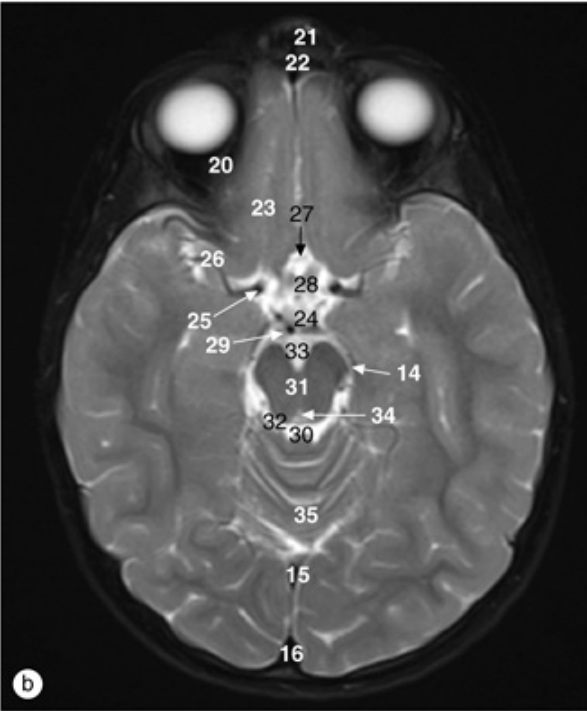
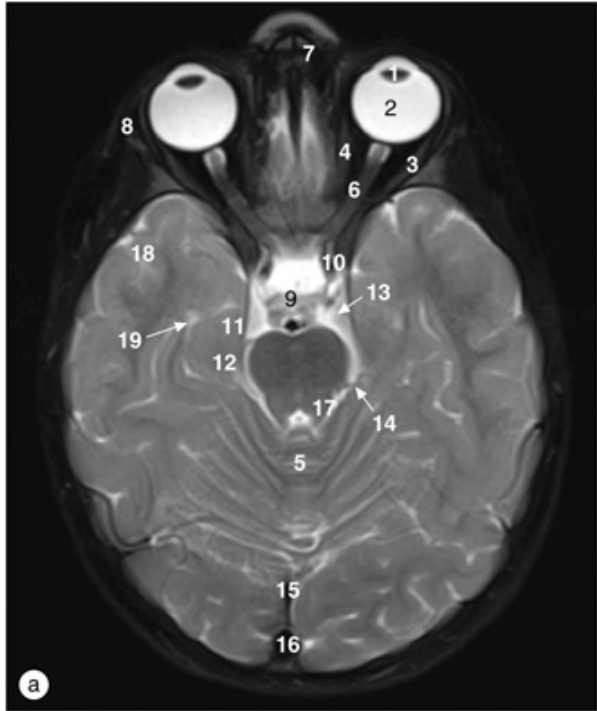
Encéfalo, imagens de RM mediosagittais ponderadas em T2.



# ENCÉFALO

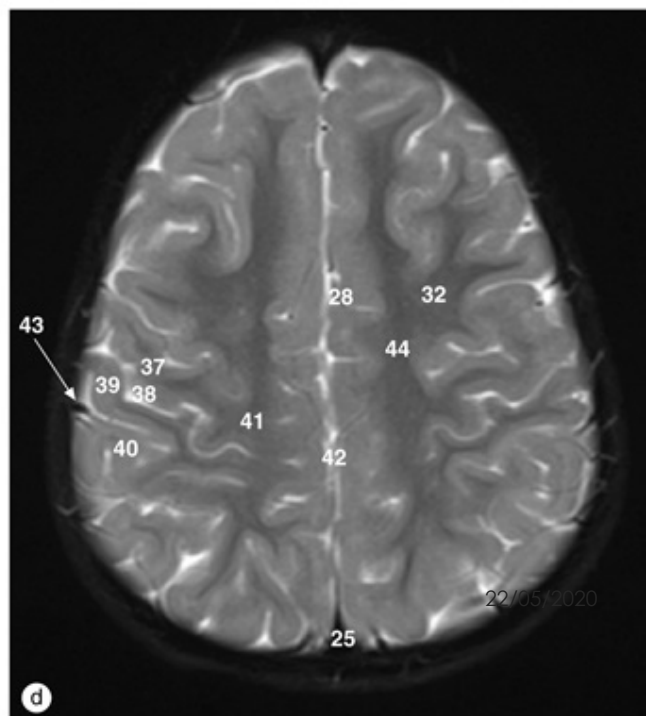
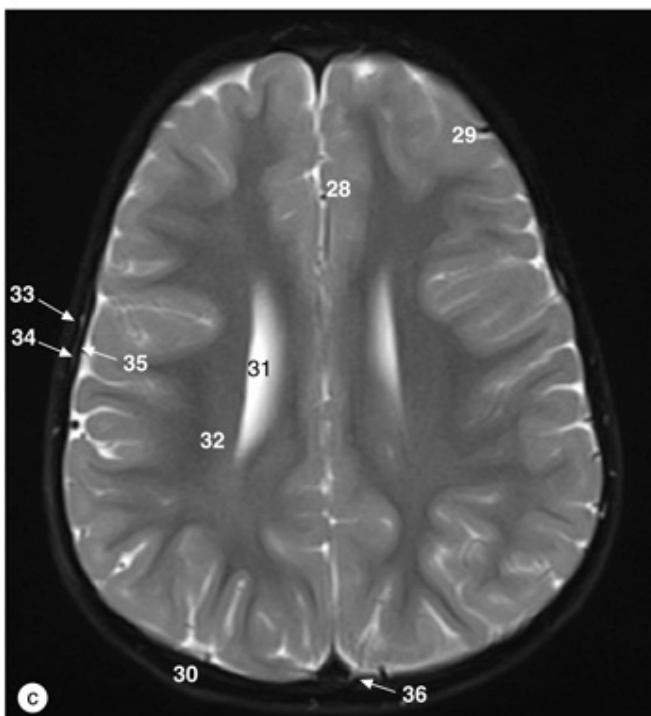
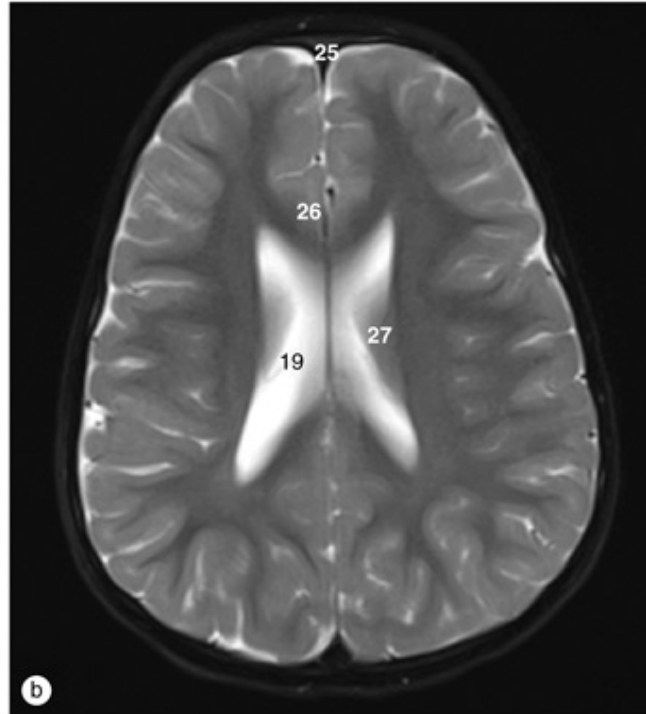
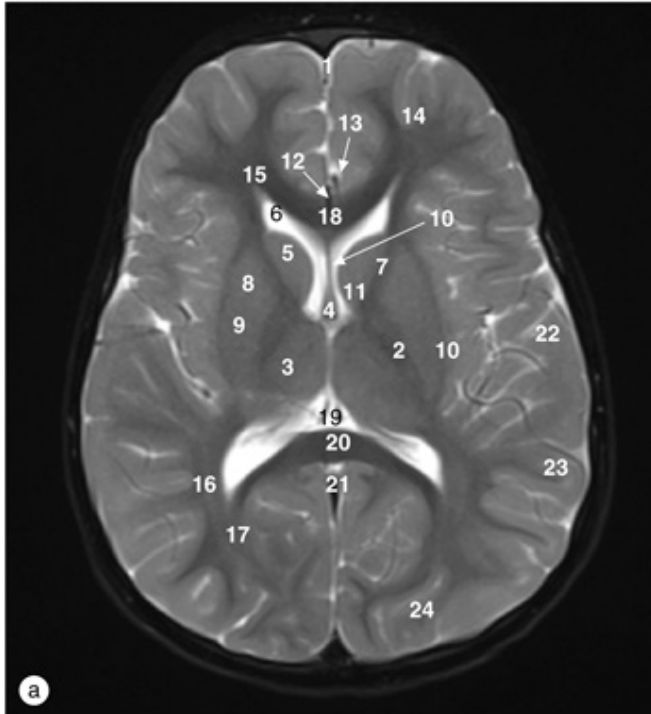
Encéfalo, imagens de RM axiais ponderadas em T2, de inferior para superior.





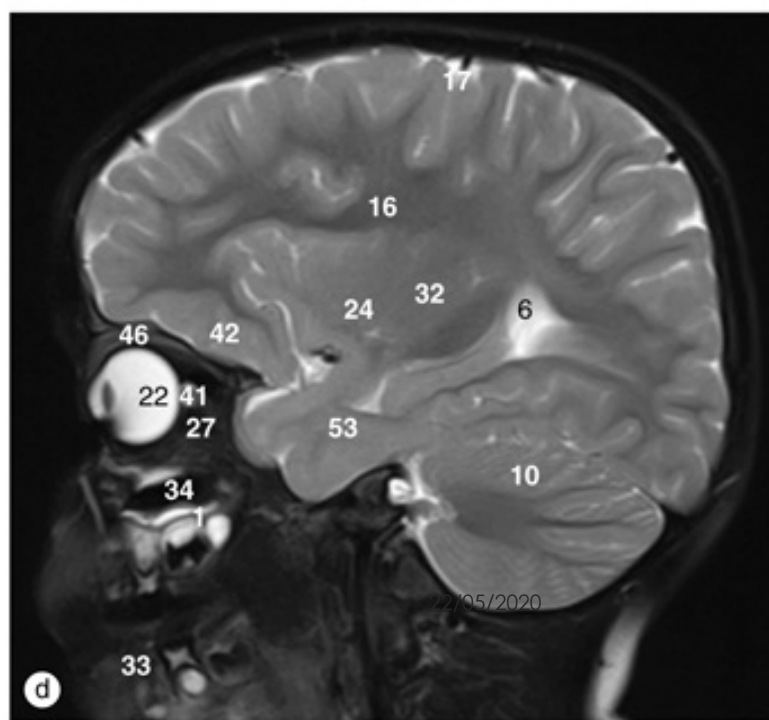
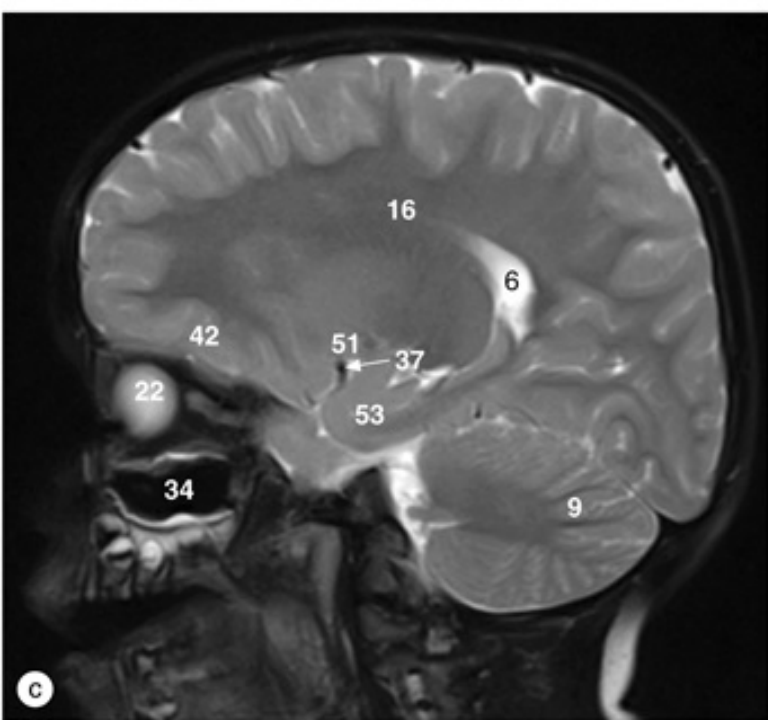
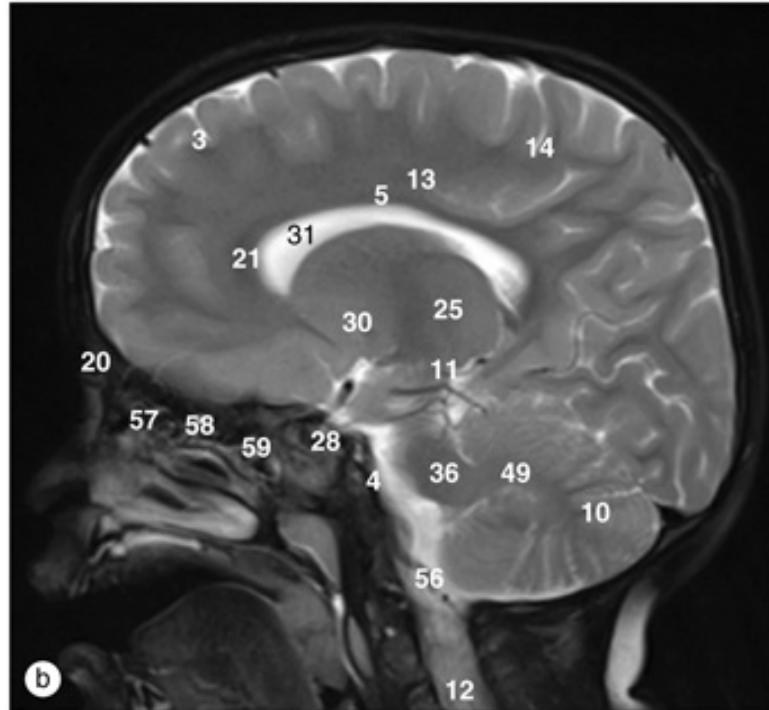
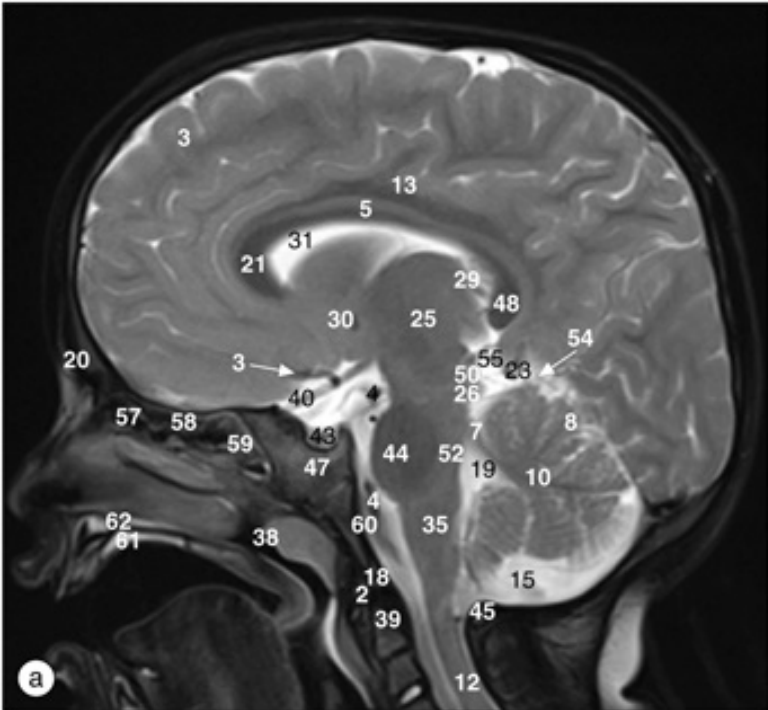
# EENCÉFALO

Encéfalo, imagens de RM axiais ponderadas em T2, de inferior para superior.



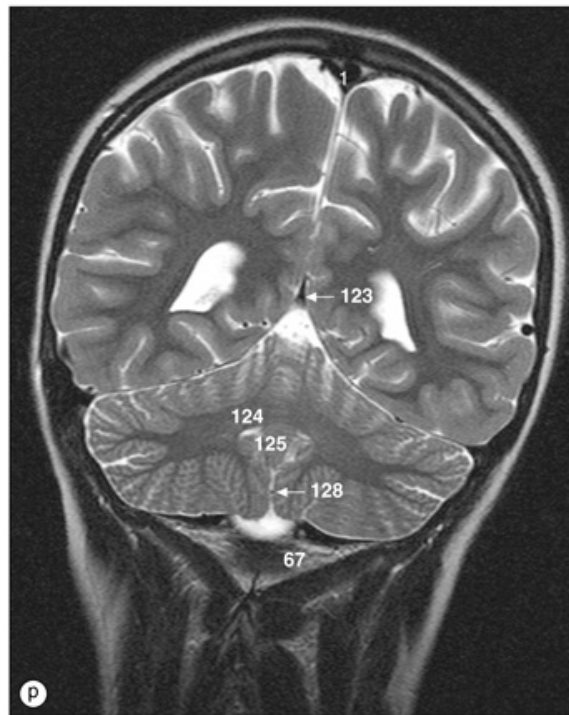
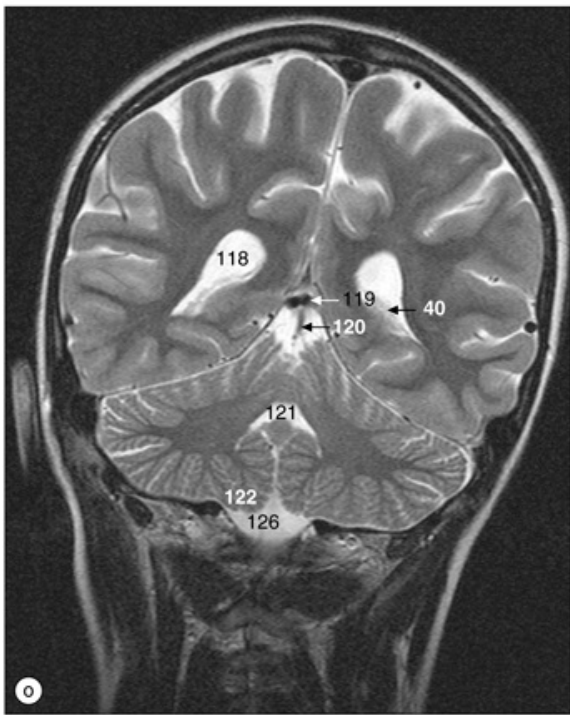
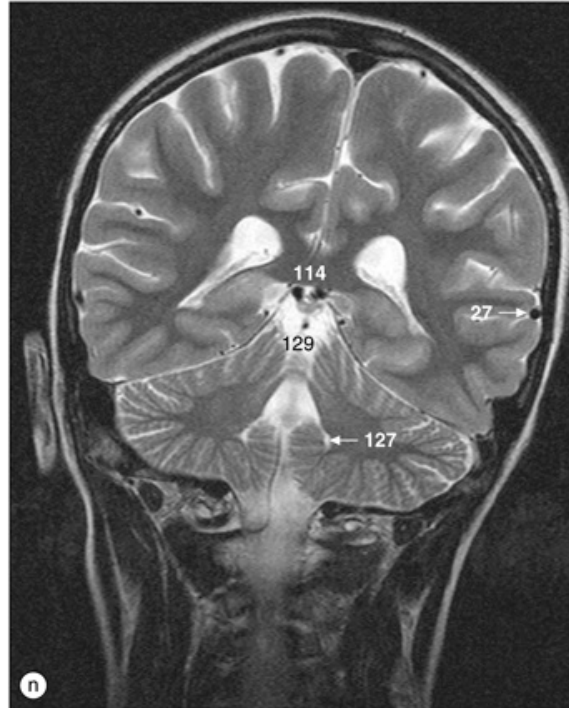
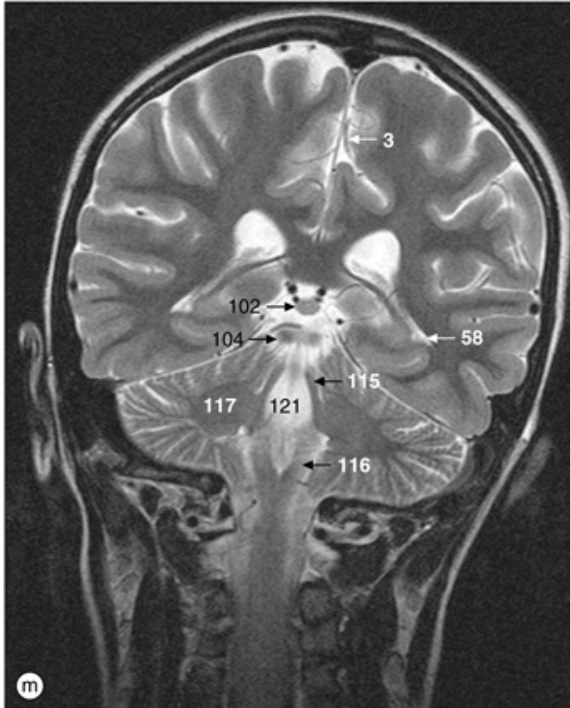
# ENCÉFALO

Encéfalo, imagens de RM axiais ponderadas em T2, de inferior para superior.



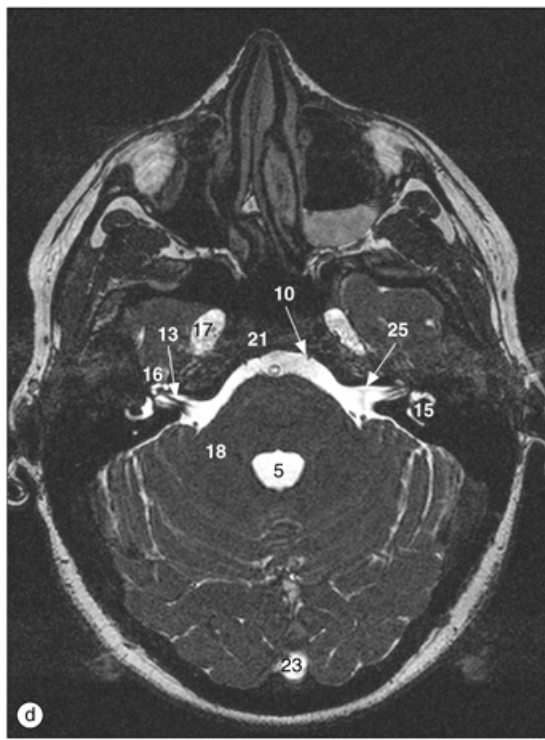
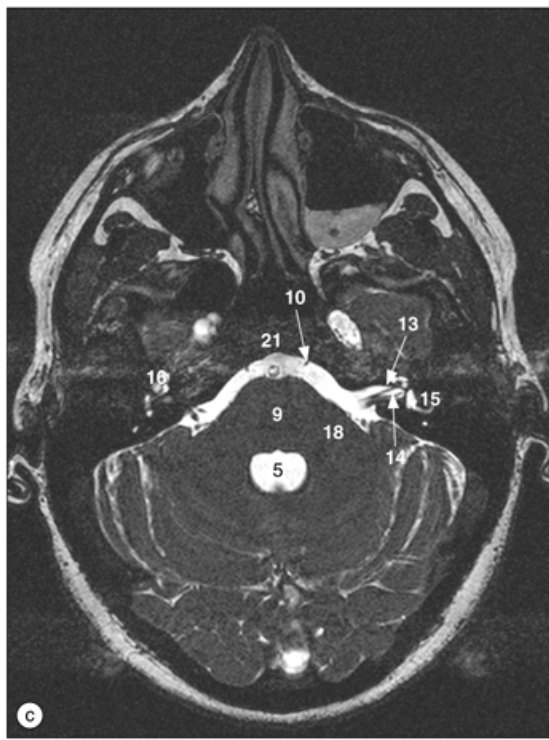
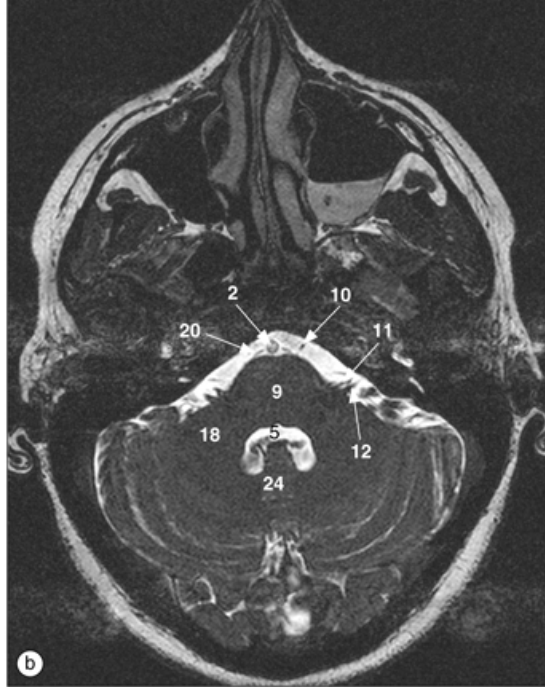
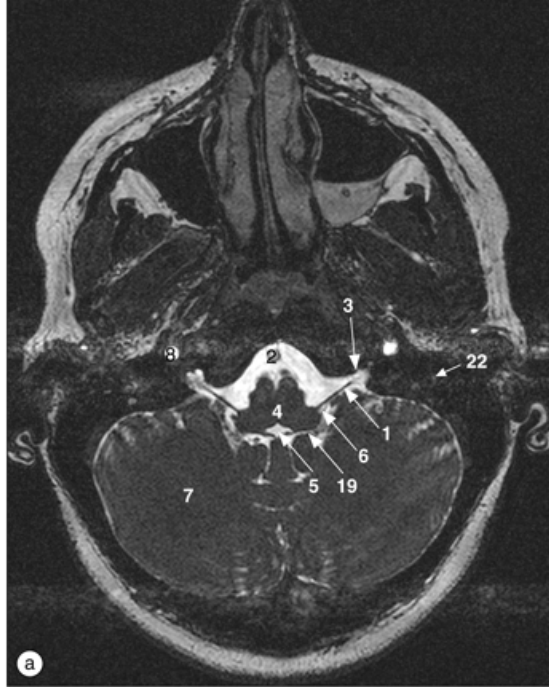
# ENCÉFALO

Encéfalo, imagens de RM sagitais ponderadas em T2.



# ENCÉFALO

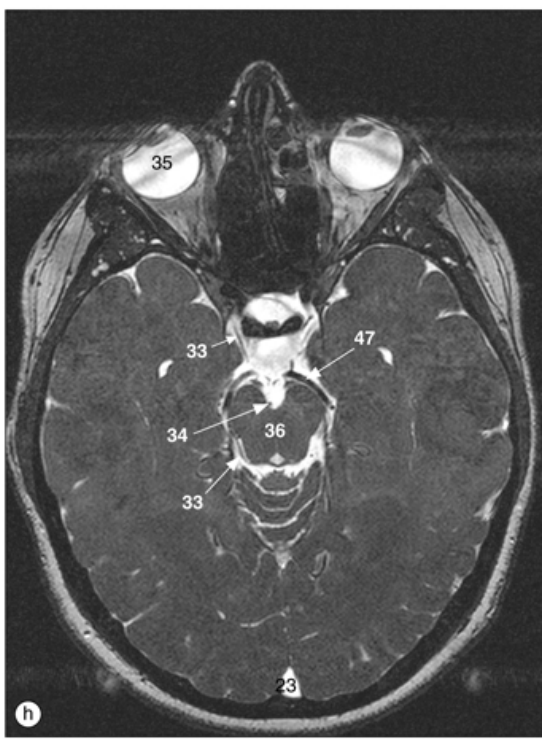
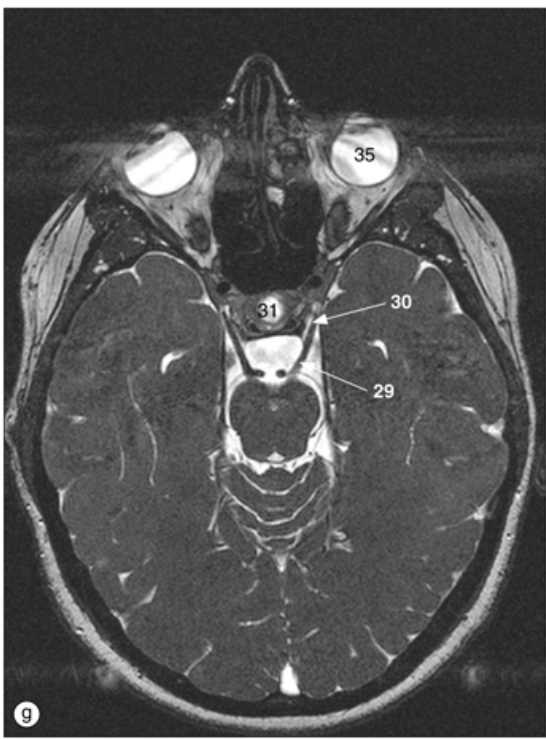
(a)-(p) Encéfalo, imagens de RM coronais ponderadas em T2, de anterior a posterior.



## Fossa posterior e mesencéfalo

(a)-(h) Imagens de RM axiais, de inferior a superior.

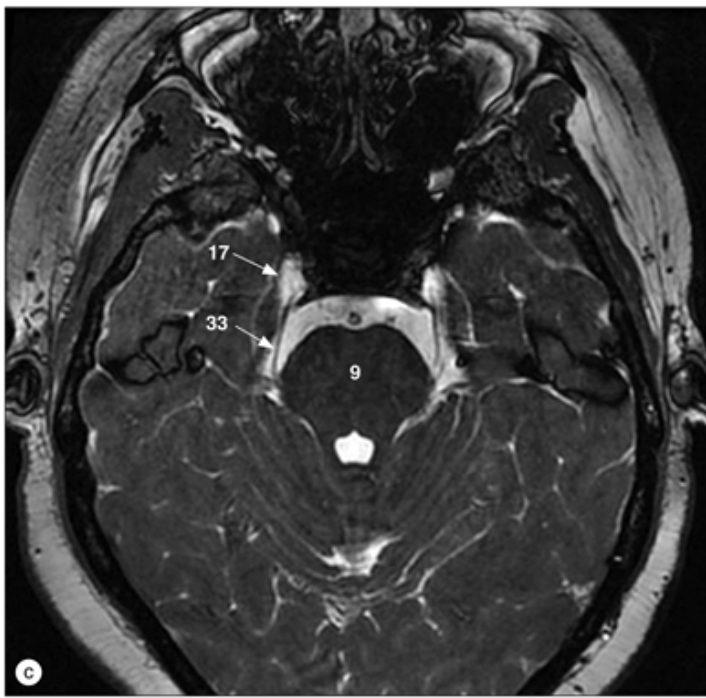
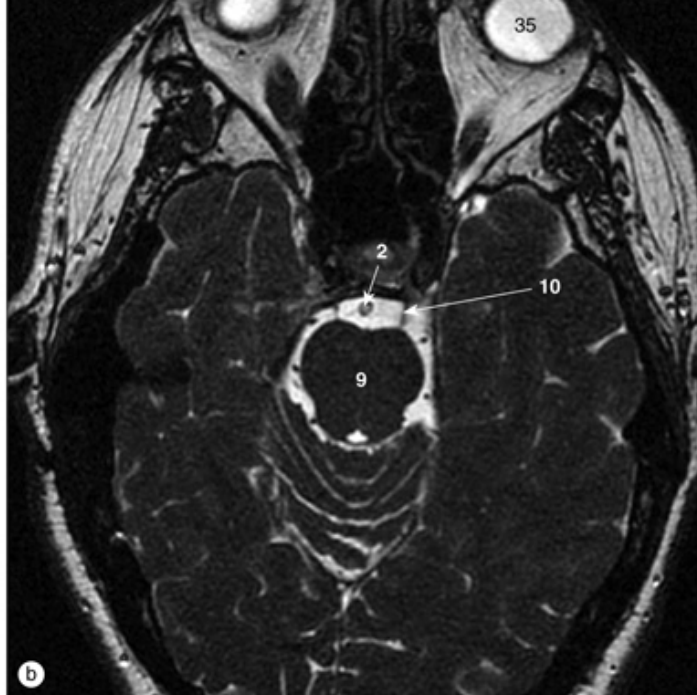




## Fossa posterior e mesencéfalo

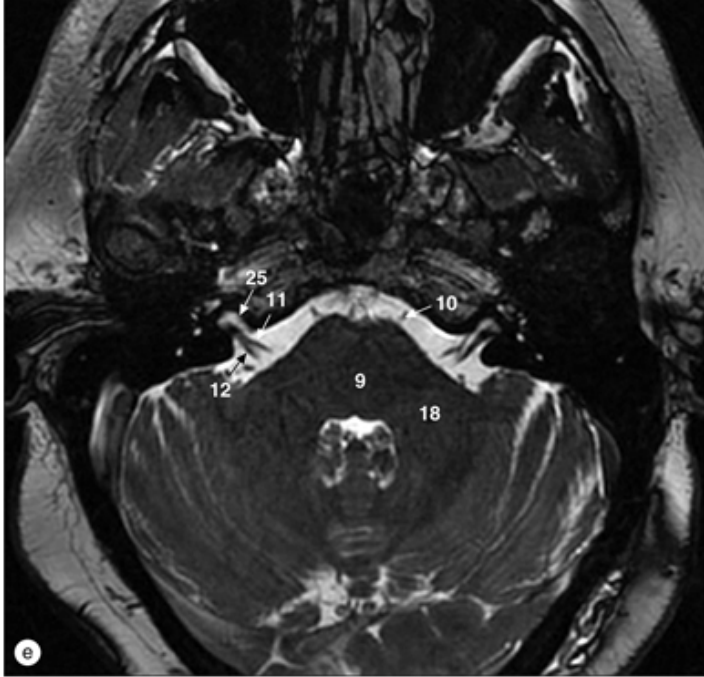
(a)-(h) Imagens de RM axiais, de inferior a superior.





## Nervos cranianos

Nervos cranianos,  
imagens de RM de (a)  
nervos olfatórios e ópticos,  
(b) nervo oculomotor, (c)  
nervo troclear, (d) nervo  
trigêmeo

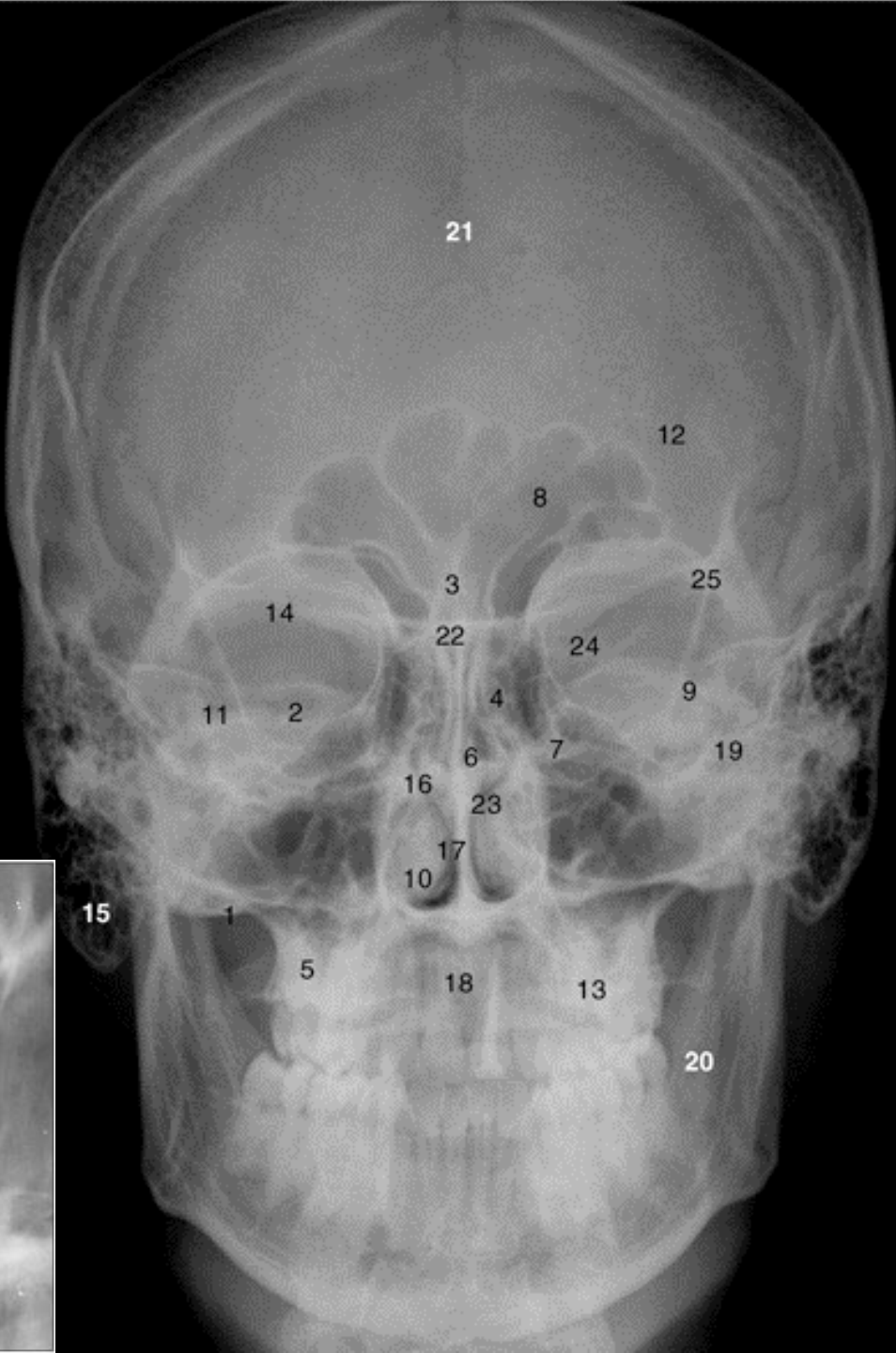
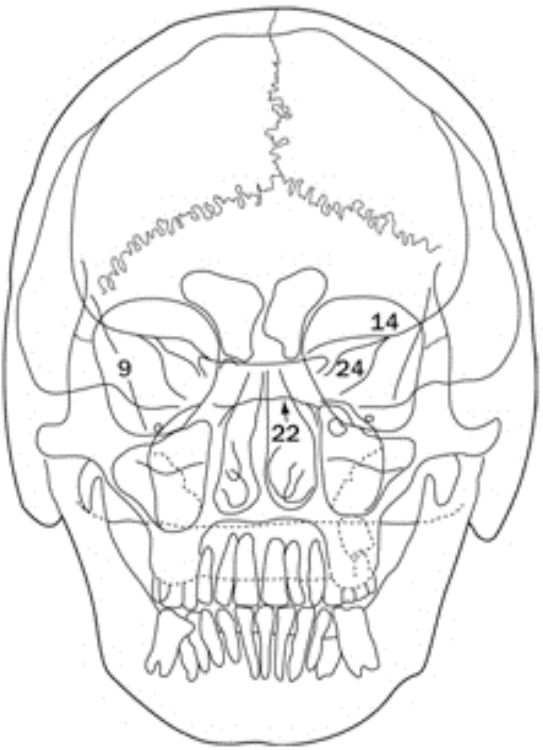


## Nervos cranianos

Nervos cranianos,  
imagens de RM de (e) e  
(f) nervos abducente,  
facial e vestibulococlear,  
(g e h) nervos  
glossofaríngeo e vago.

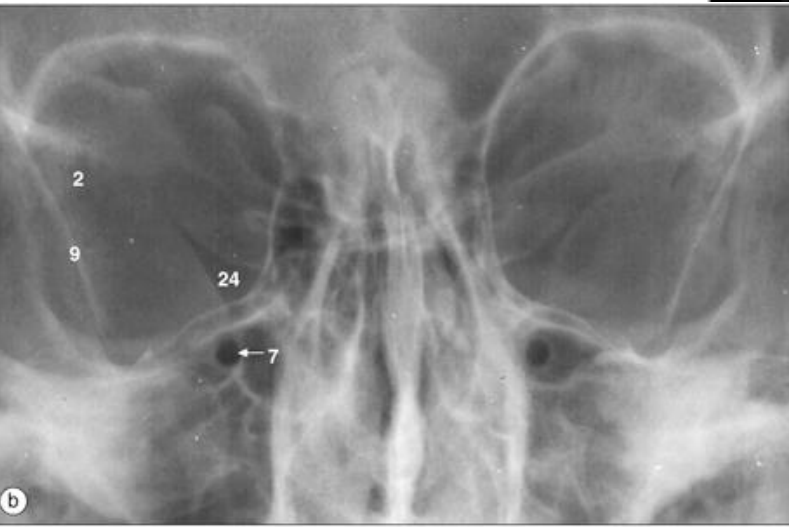
# Exames de imagens

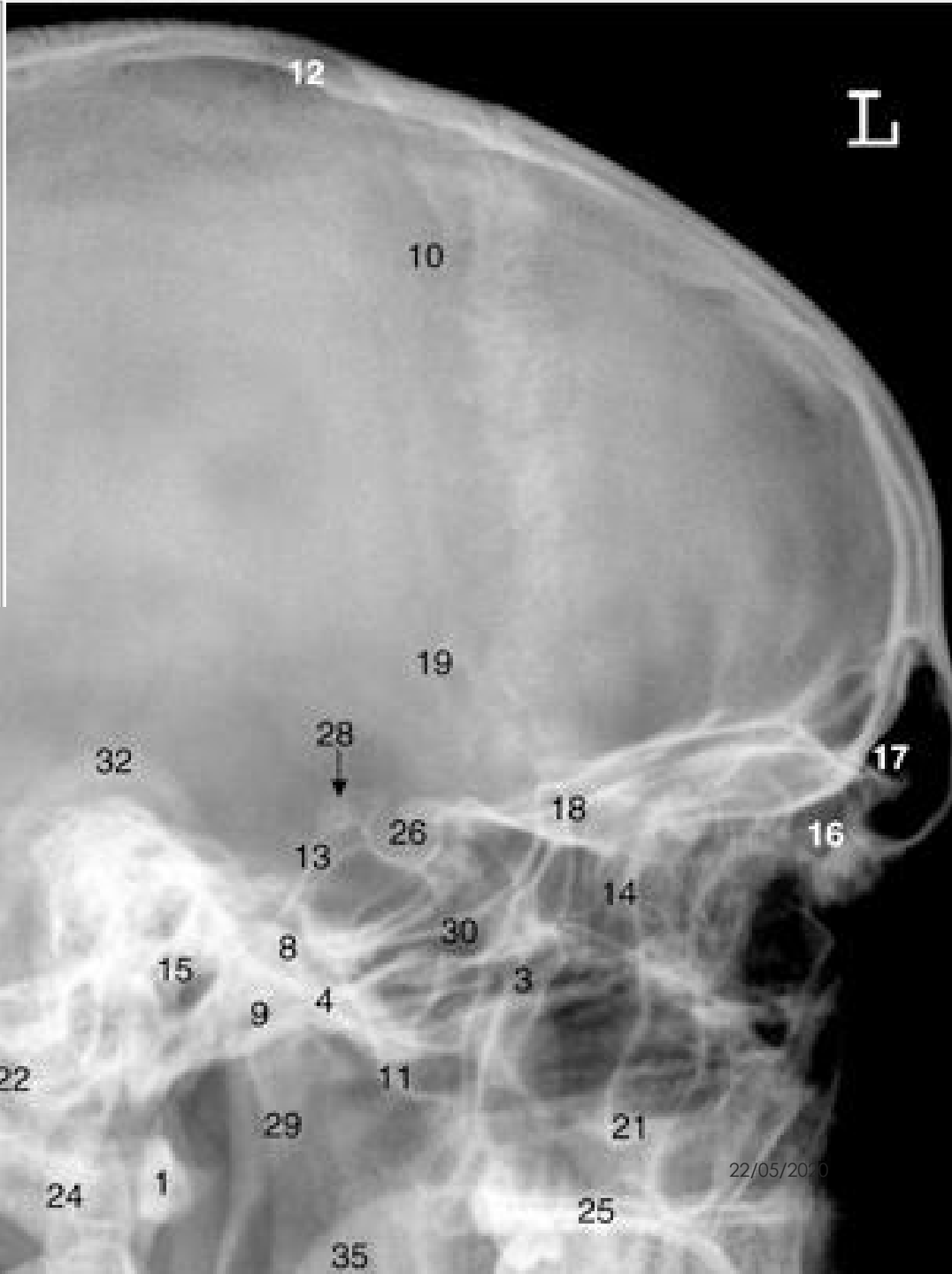
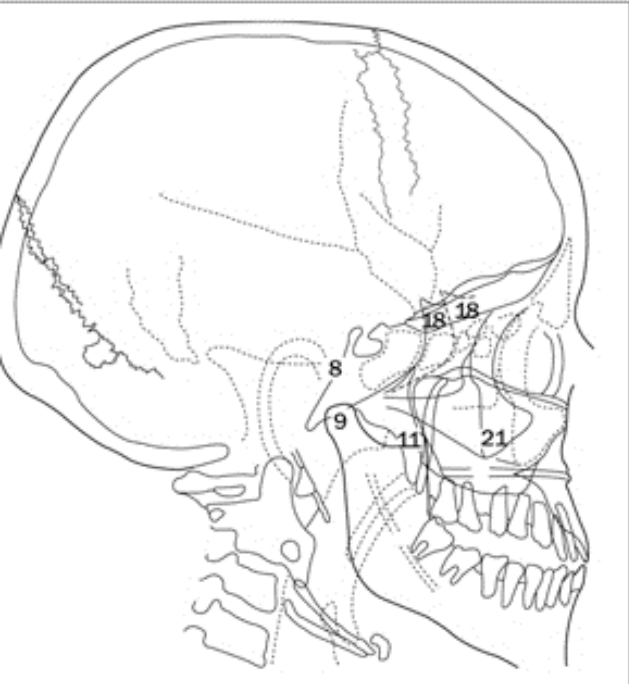
- Encéfalo
- Crânio
- Pescoço
- Coluna vertebral
- Membro superior
- Mama e axila
- Tórax, Pulmões, mediastino
- Vasos do coração
- Abdome
- Pelve
- Ultrassonografia do abdome superior
- Ultrassonografia de abdome e pelve
- Quadril
- Membros inferiores
- Exames funcionais



# CRÂNIO

(a) Crânio, radiografia occipitofrontal. (b) Crânio, radiografia occipitofrontal demonstrando o forame redondo.





## CRÂNIO

(a) Crânio, radiografia lateral. Fossa hipofisial (sela turca) radiografias laterais, (b) de uma criança de sete anos, (c) de uma mulher de 23 anos.

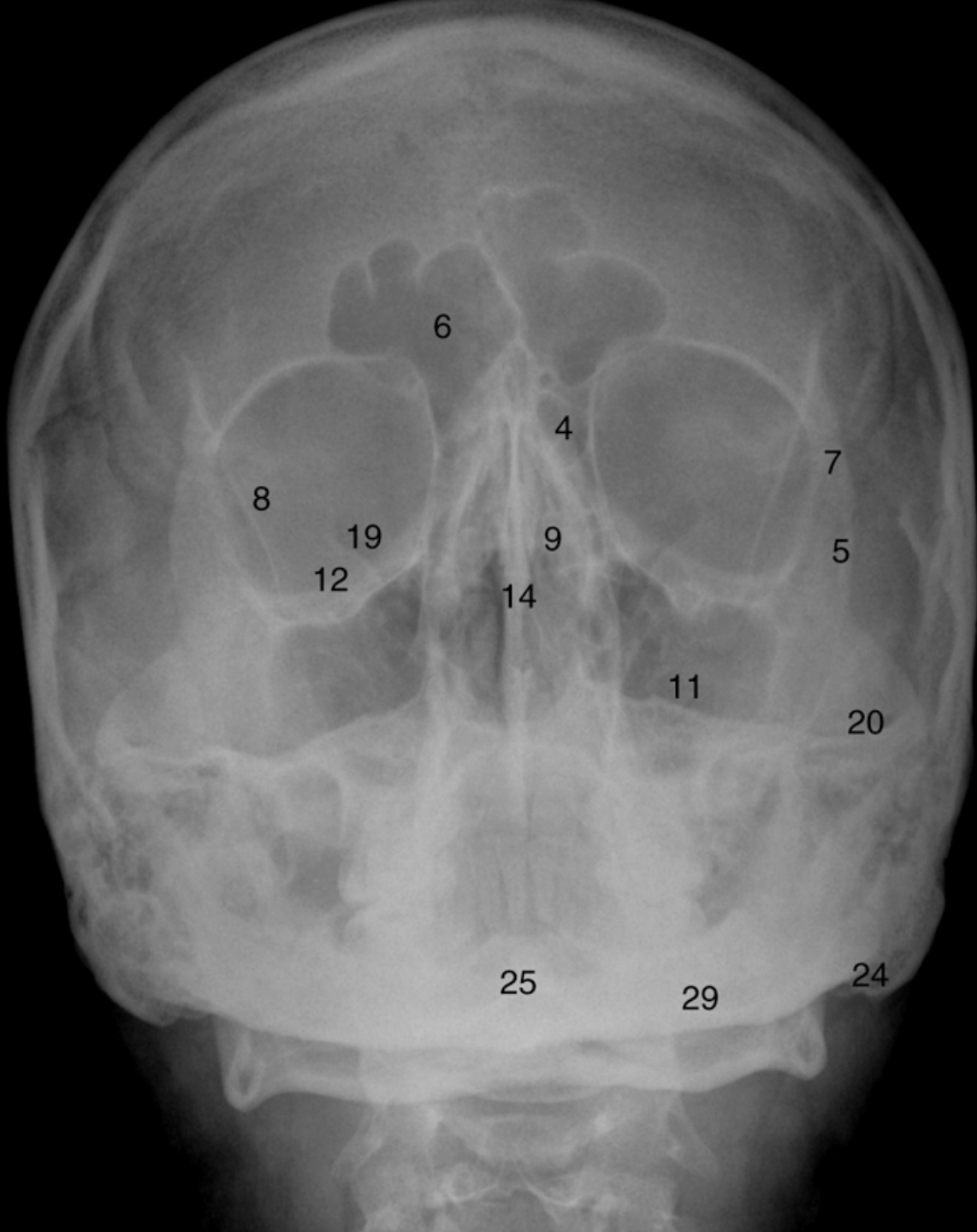
a



# CRÂNIO

Crânio, radiografia fronto-occipital 30° (de Townes).  
Notar que o arco de C1 está abaixo do forame magno, na radiografia.





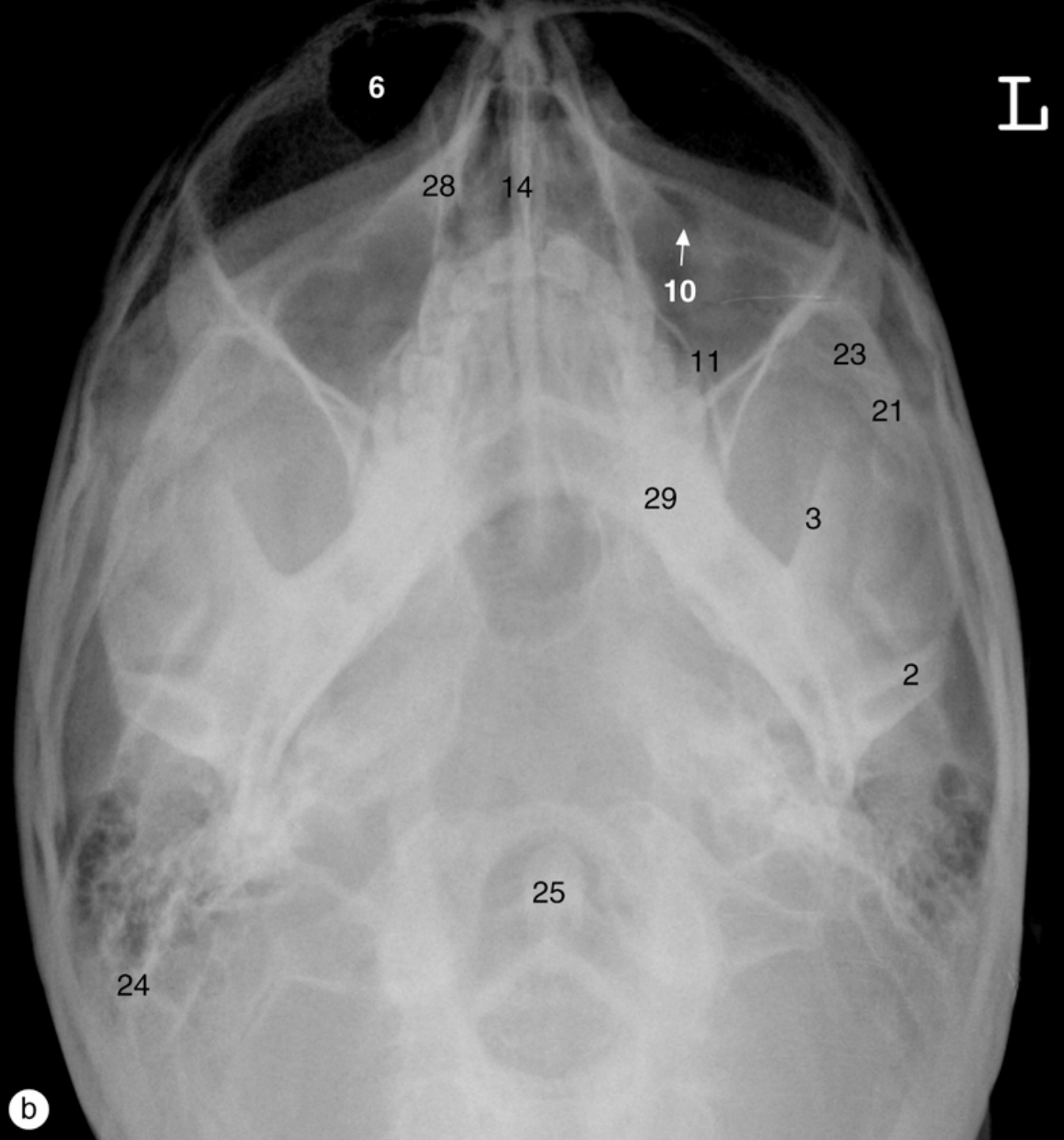
L

## Ossos da face e seios paranasais

(a) Radiografia occipitofrontal modificada.

22/05/2020

a



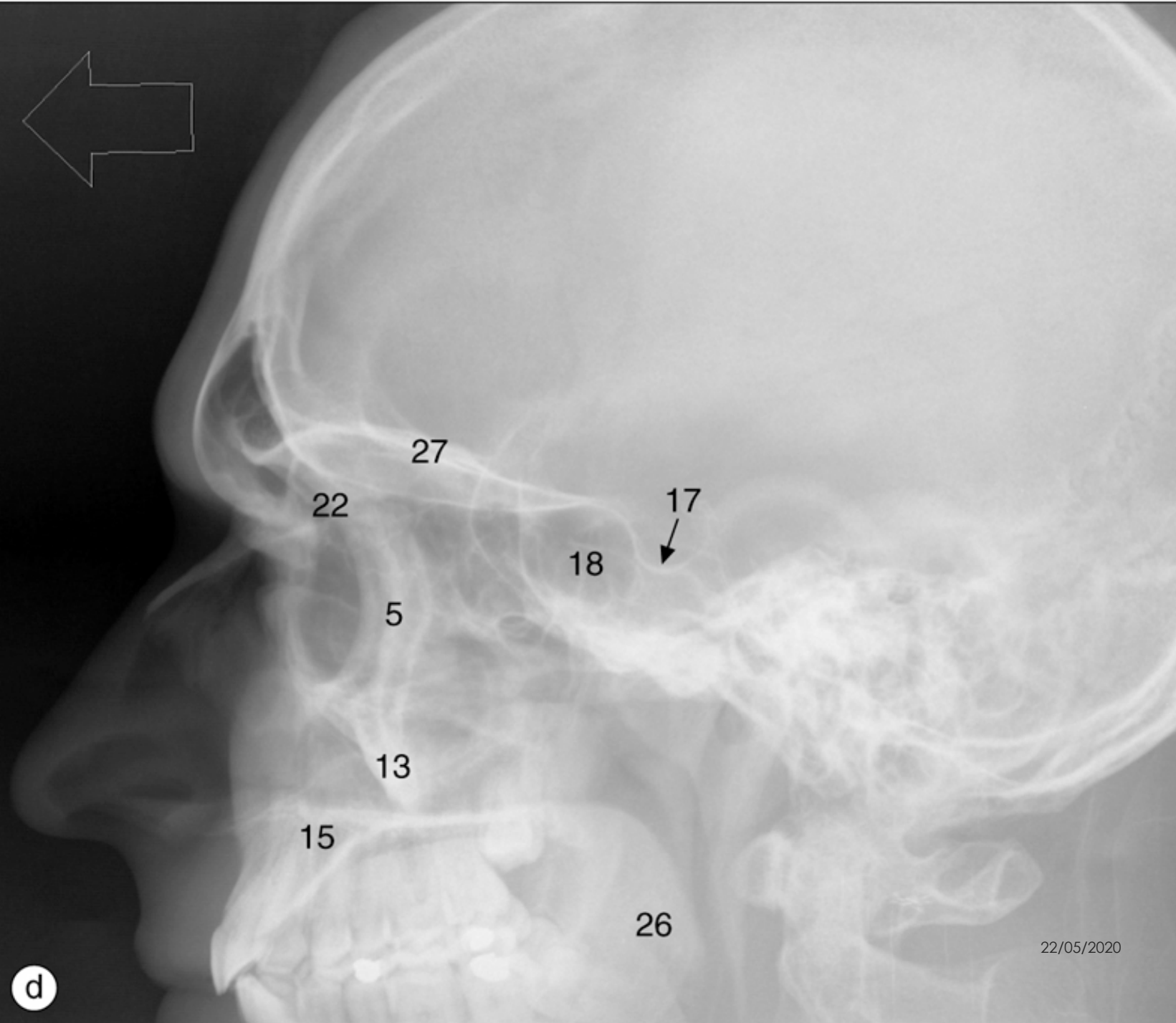
## Ossos da face e seios paranasais

(b) Radiografia occipitomentual.



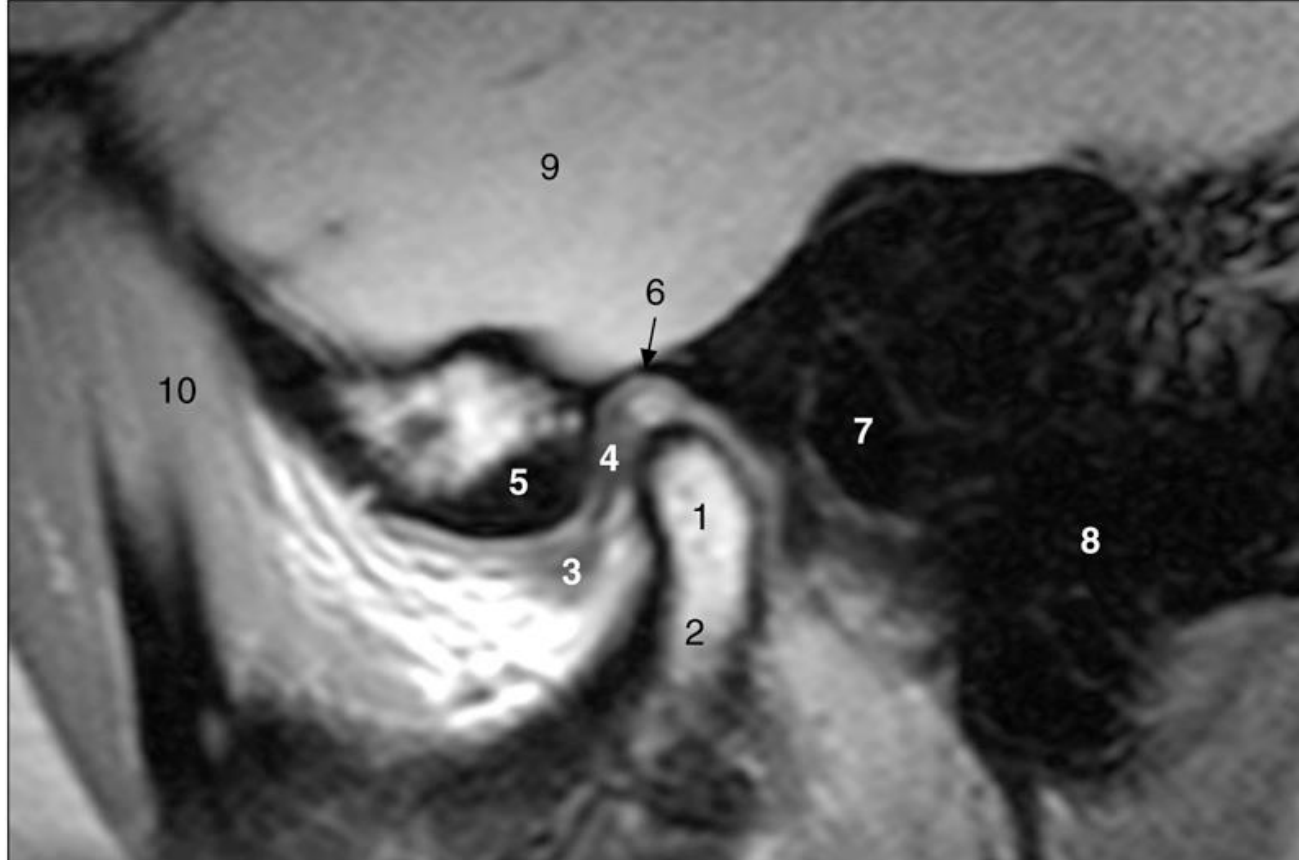
## Ossos da face e seios paranasais

(c) Radiografia lateral dos ossos nasais.



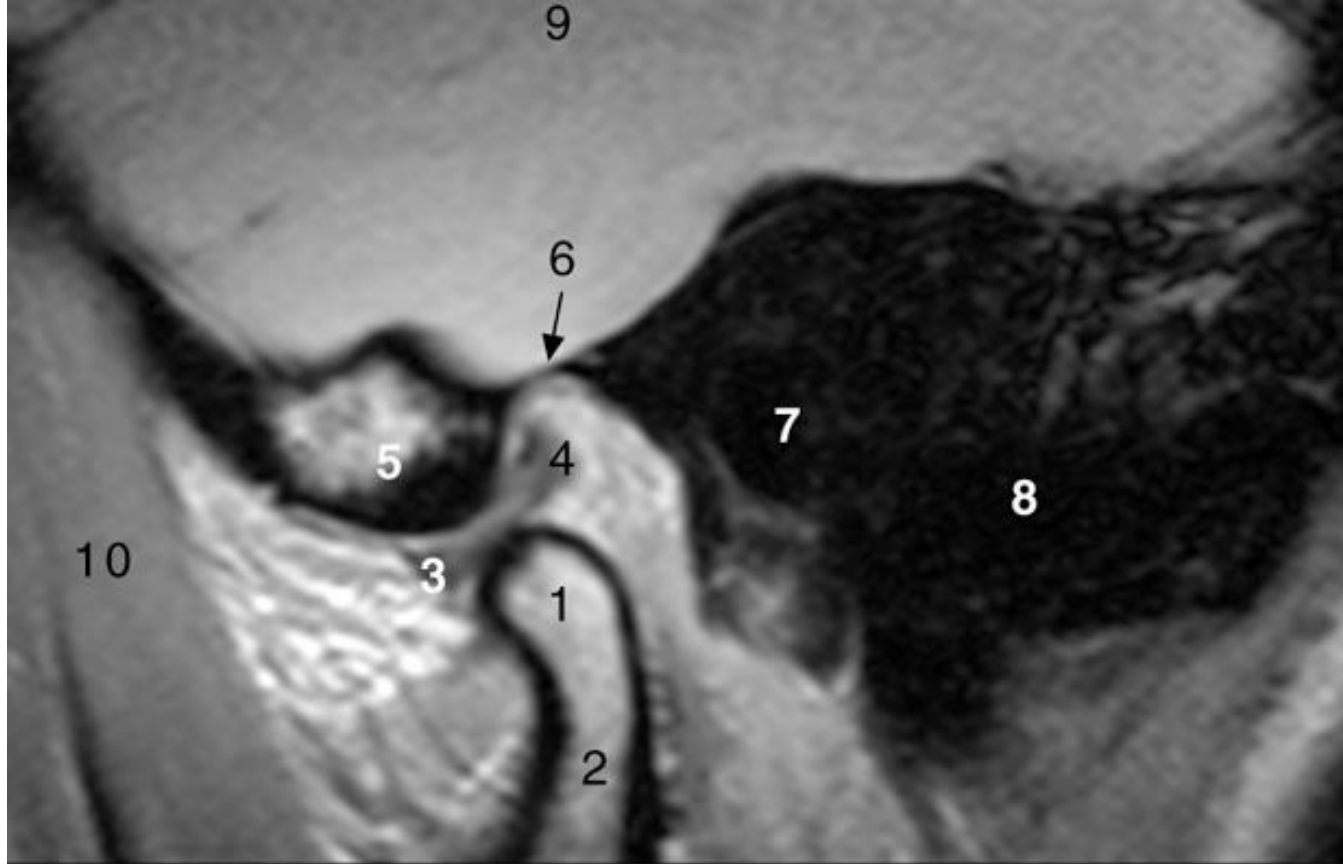
## Ossos da face e seios paranasais

(d) Radiografia lateral dos seios.



## Articulação temporomandibular

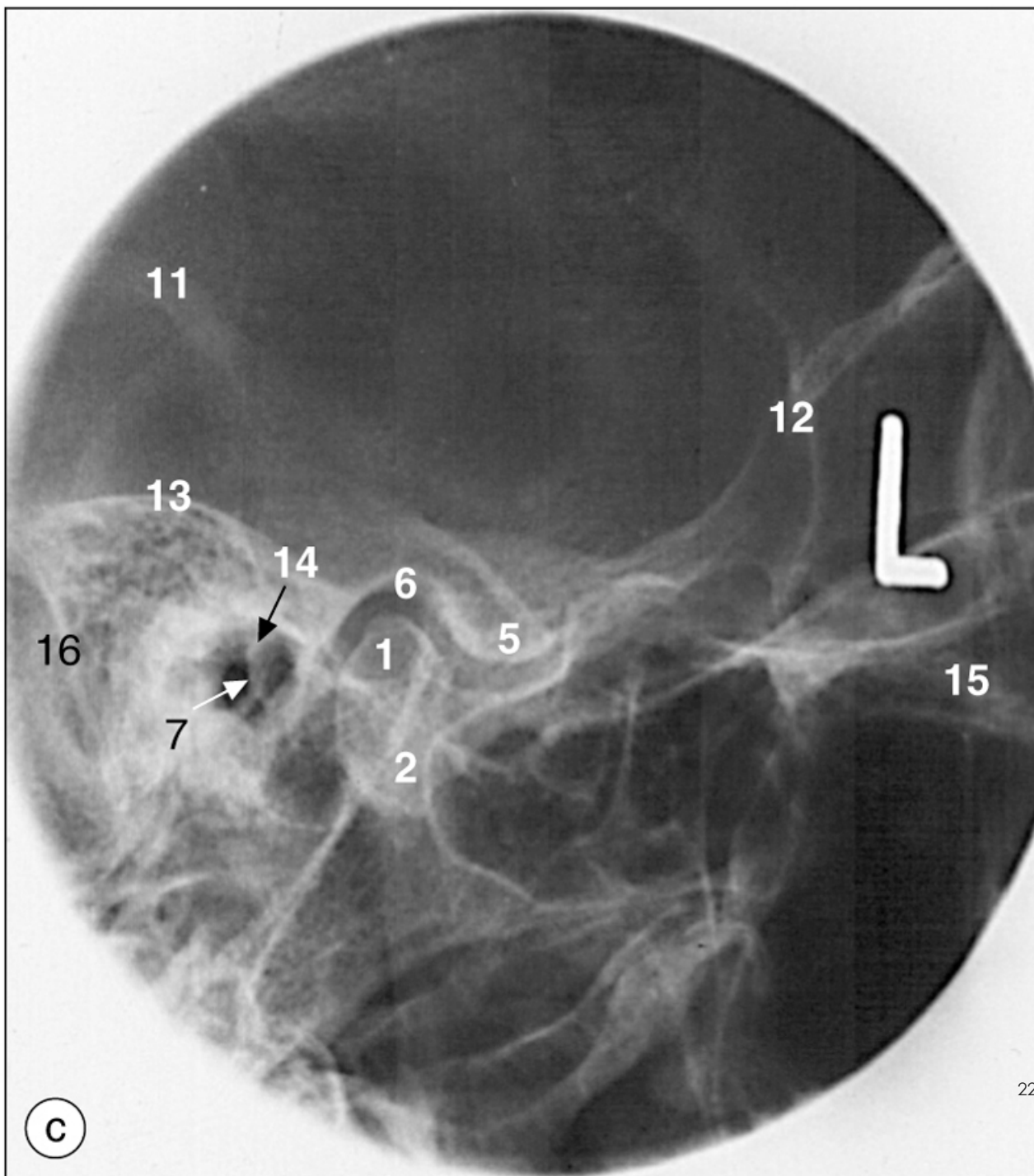
(a) Boca fechada.  
Imagens de RM sagitais  
ponderadas em T1 com a  
face para a esquerda.



## Articulação temporomandibular

(b) Boca aberta, côndilo mandibular protraído sobre a eminência articular. Articulação temporomandibular, imagens de RM sagitais ponderadas em T1 com a face para a esquerda.



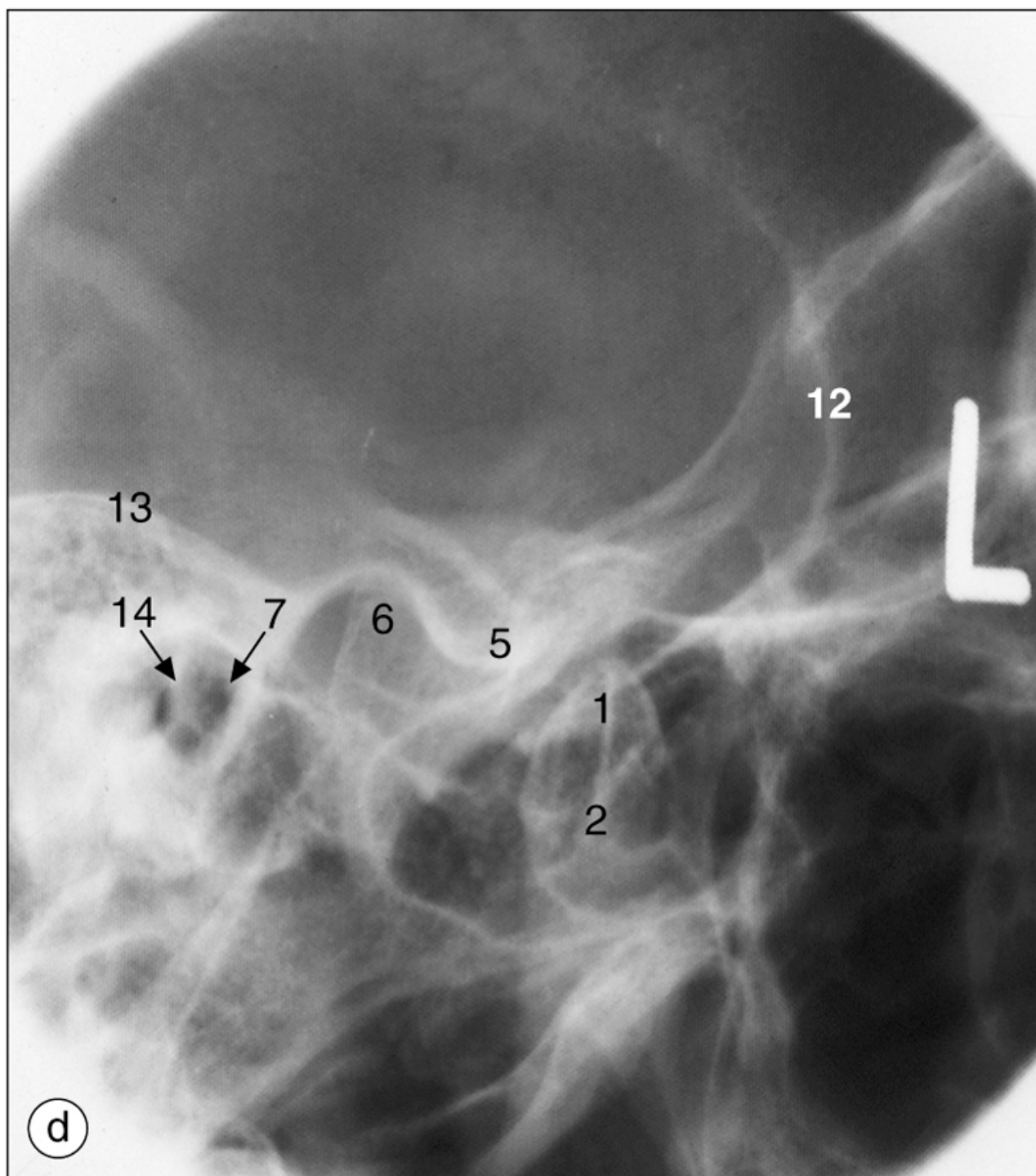


## Articulação temporomandibular

(c) Boca aberta. (?)

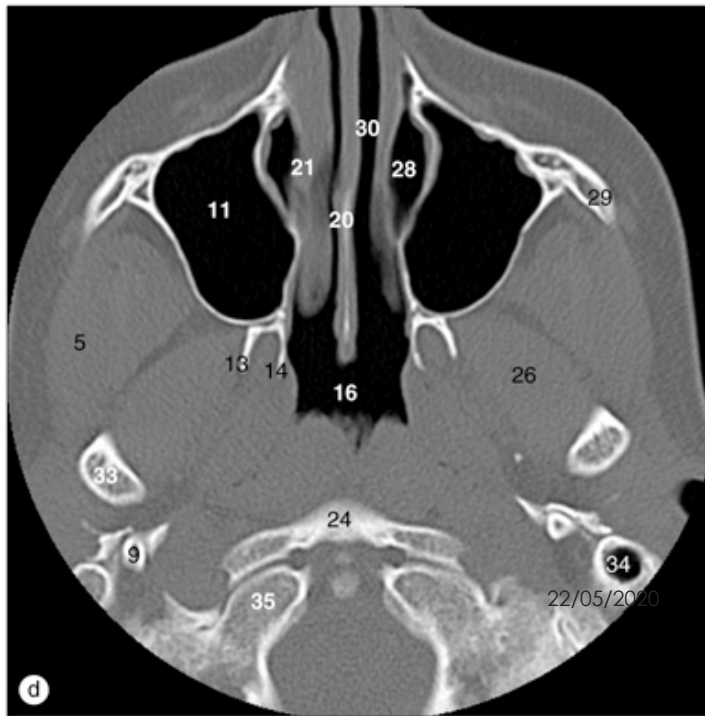
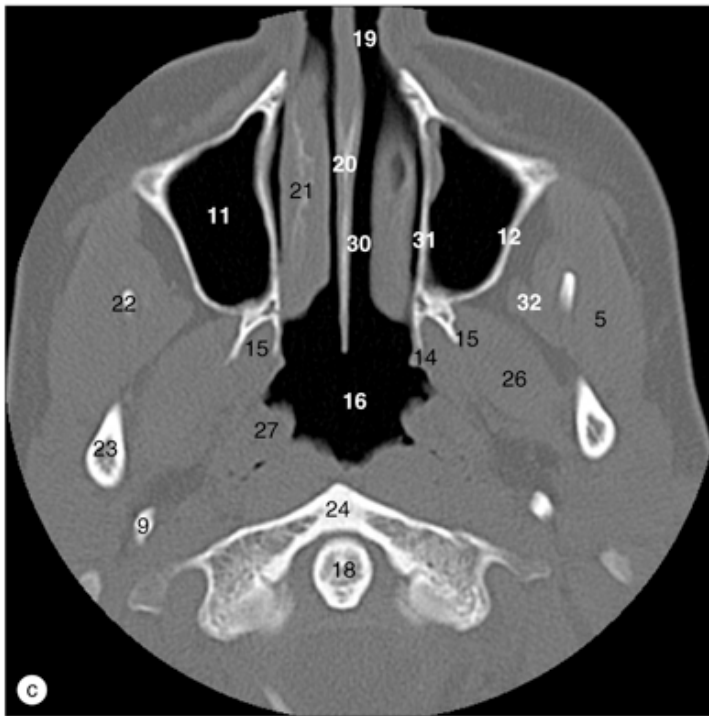
22/05/2020

(c)



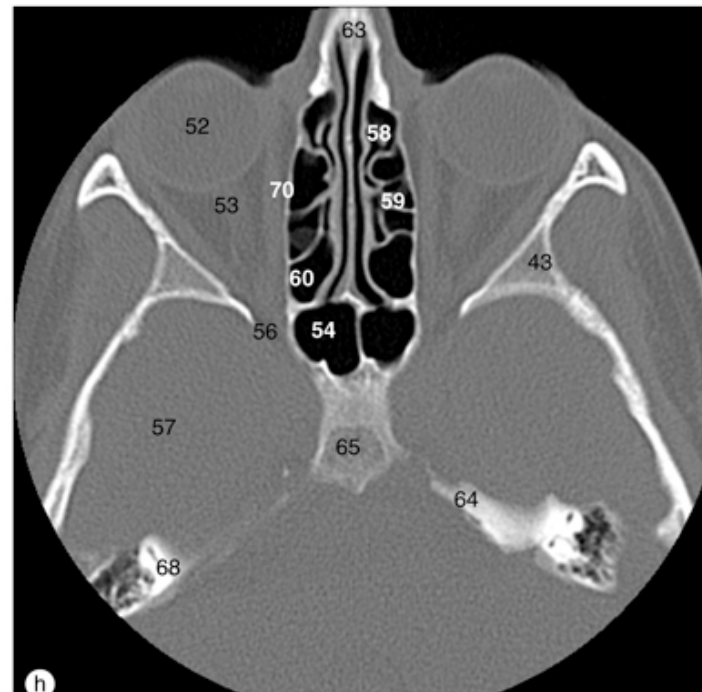
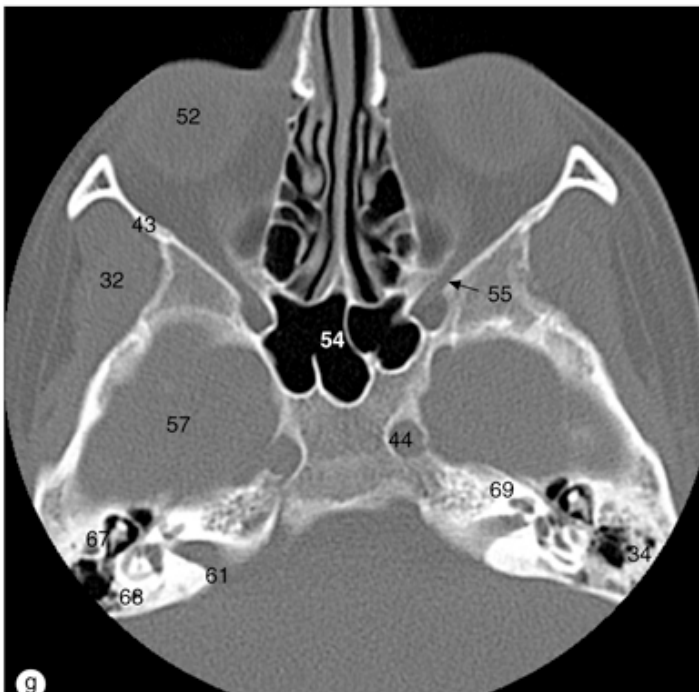
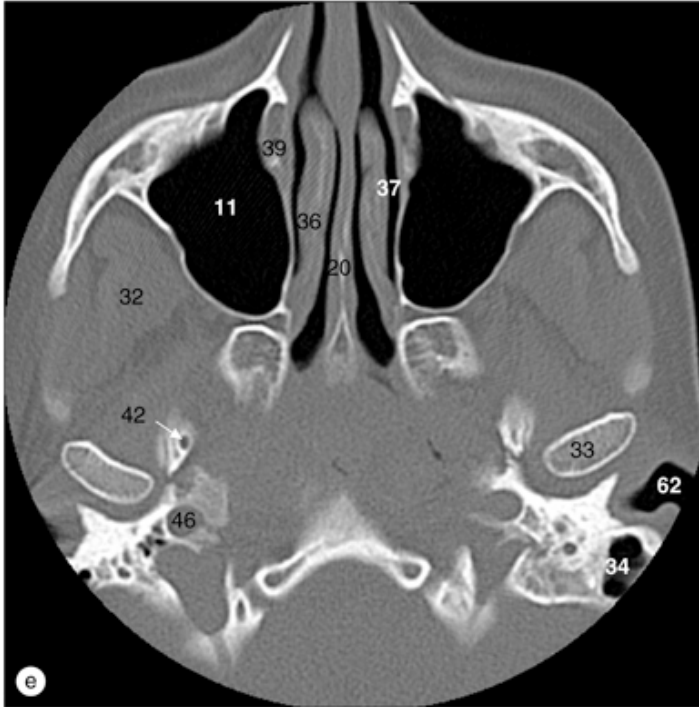
## Articulação temporomandibular

(d) Boca fechada. (?)



## Seios paranasais

Ossos da face e seios paranasais, imagens de TC axiais obtidas nos seguintes níveis: (a) processo alveolar da maxila, (b) palato duro, (c) narinas, (d) seio maxilar,



## Seios paranasais

Ossos da face e seios paranasais, imagens de TC axiais obtidas nos seguintes níveis: (e) concha nasal média, (f) arco zigomático, (g) seio esfenoidal, (h) células etmoidais.



***UniSALESIANO***

