

# ANATOMIA E PATOLOGIA EM IMAGENS IV

PROF FERNANDO HENRIQUE ALVES BENEDITO



**UniSALESIANO**



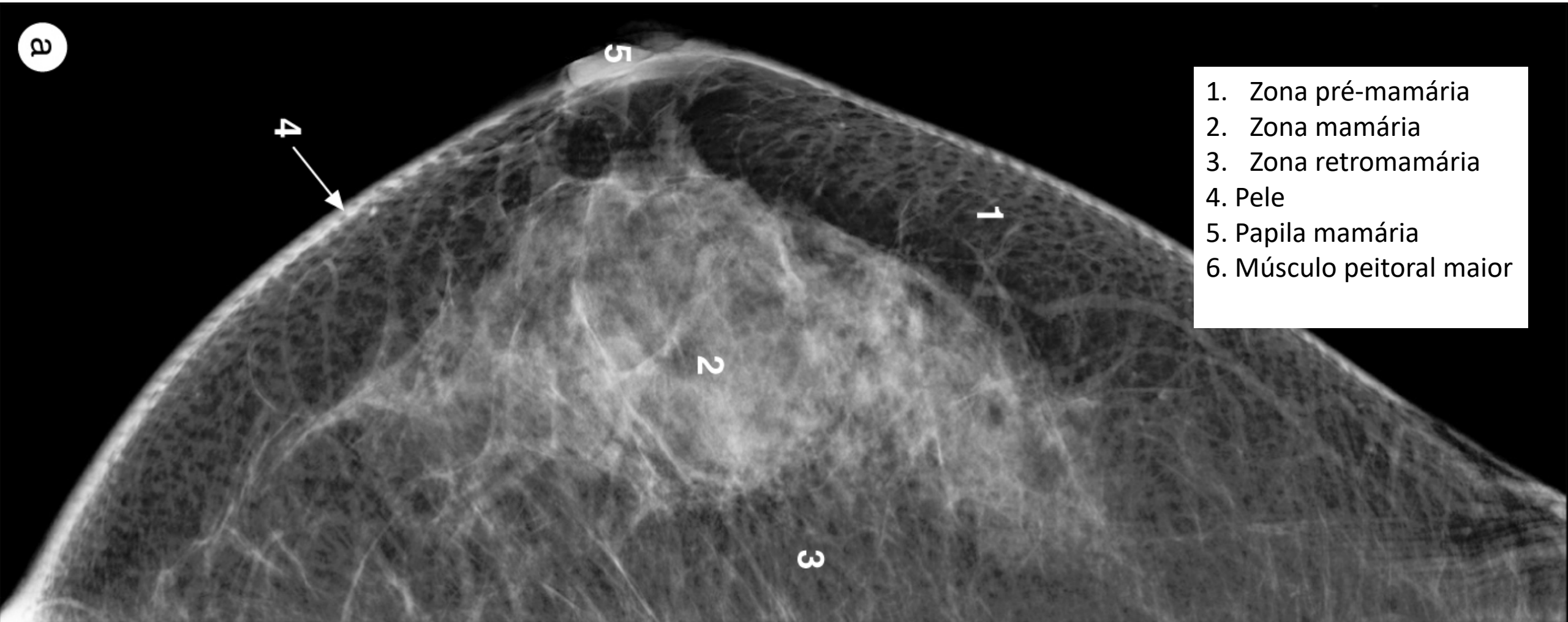
# Exames de imagens

- Encéfalo
- Crânio
- Pescoço
- Coluna vertebral
- Membro superior
- Mama e axila
- Tórax, Pulmões, mediastino
- Vasos do coração
- Abdome
- Pelve
- Ultrassonografia do abdome superior
- Ultrassonografia de abdome e pelve
- Quadril
- Membros inferiores
- Exames funcionais

# Exames de imagens

- Encéfalo
- Crânio
- Pescoço
- Coluna vertebral e medula espinhal
- Membro superior
- **Mama e axila**
- Tórax, Pulmões, mediastino
- Vasos do coração
- Abdome
- Pelve
- Ultrassonografia do abdome superior
- Ultrassonografia de abdome e pelve
- Quadril
- Membros inferiores
- Exames funcionais

Vista craniocaudal (CC).

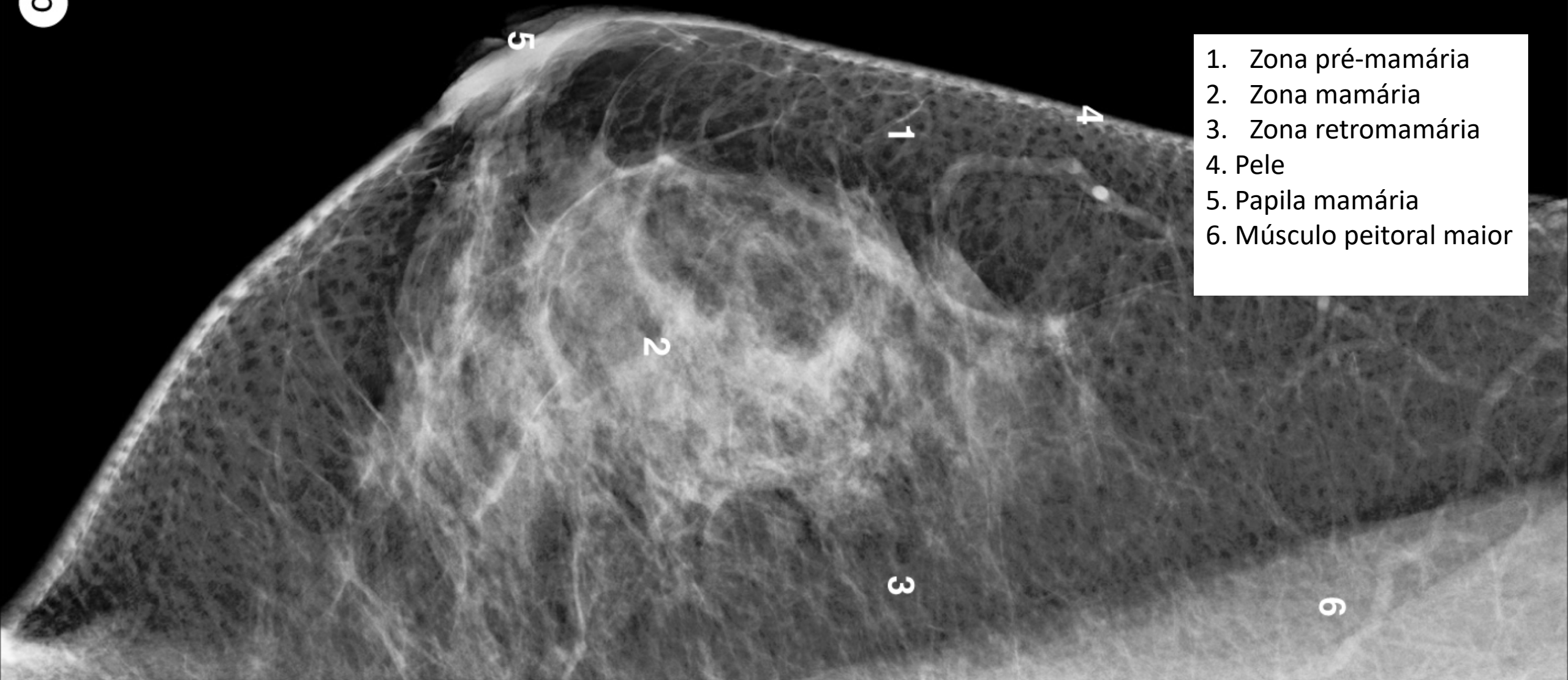


1. Zona pré-mamária
2. Zona mamária
3. Zona retromamária
4. Pele
5. Papila mamária
6. Músculo peitoral maior

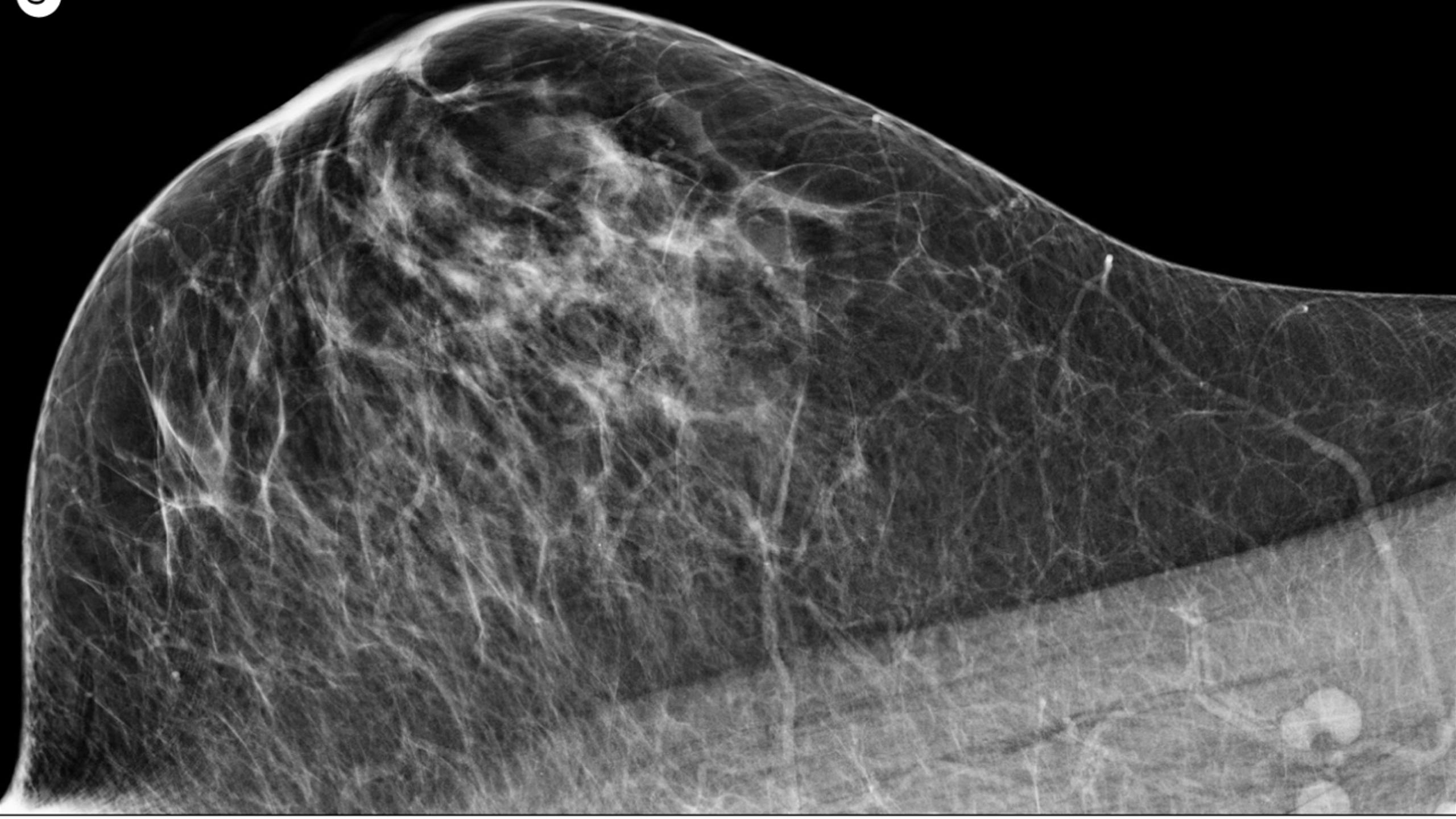


Vista craniocaudal (CC).

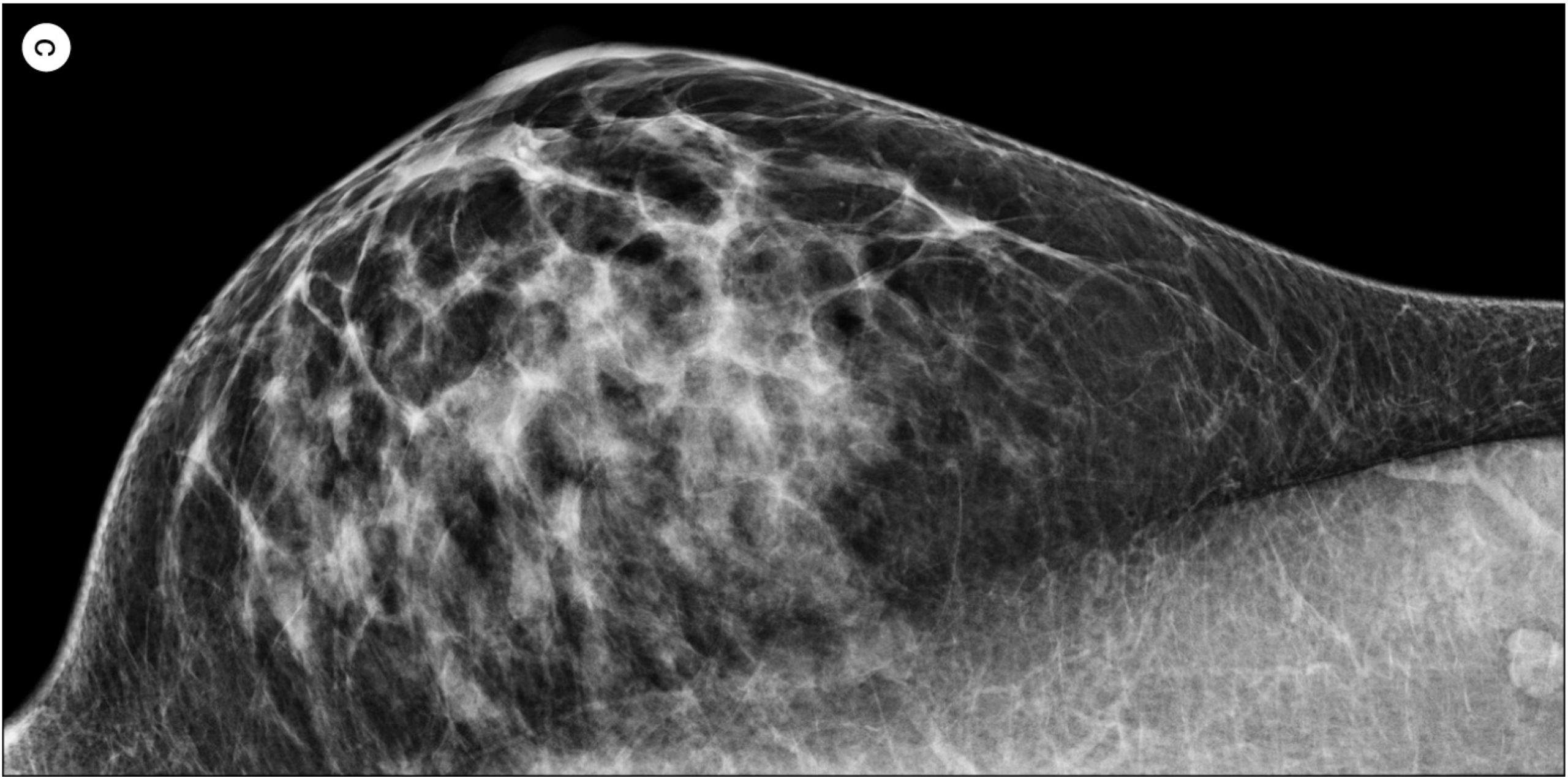
9



1. Zona pré-mamária
2. Zona mamária
3. Zona retromamária
4. Pele
5. Papila mamária
6. Músculo peitoral maior



C

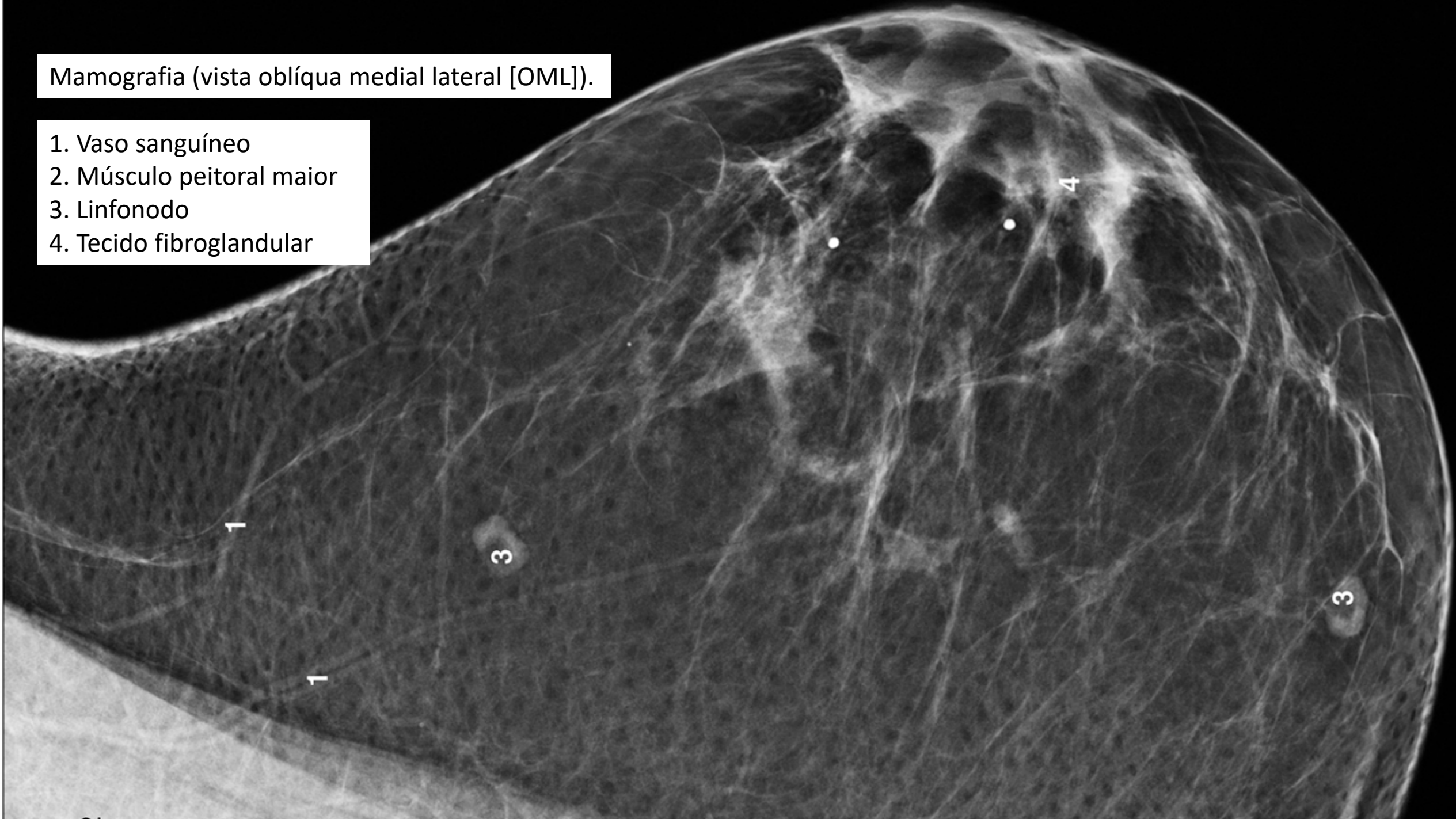


29/05/2020

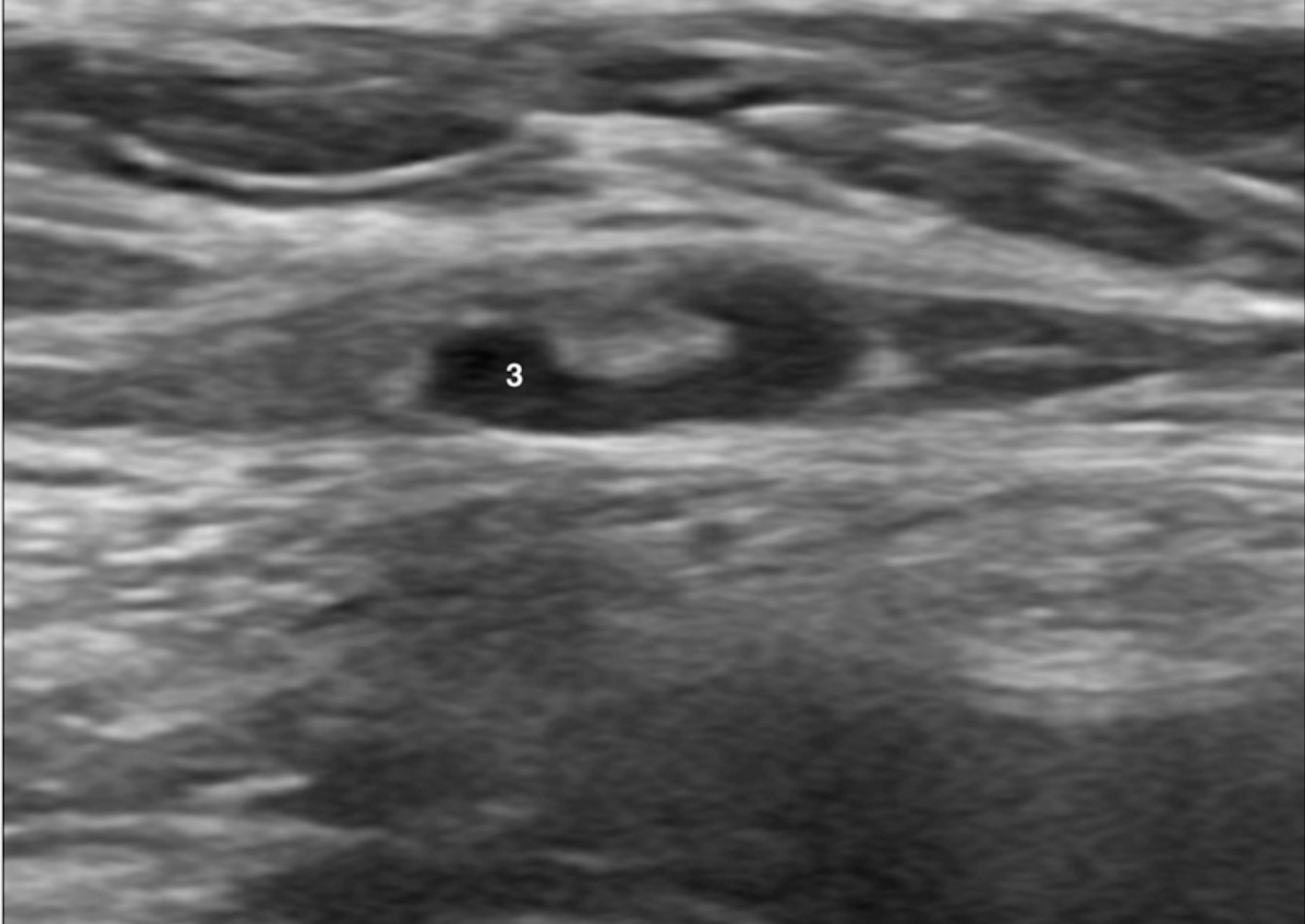


Mamografia (vista oblíqua medial lateral [OML]).

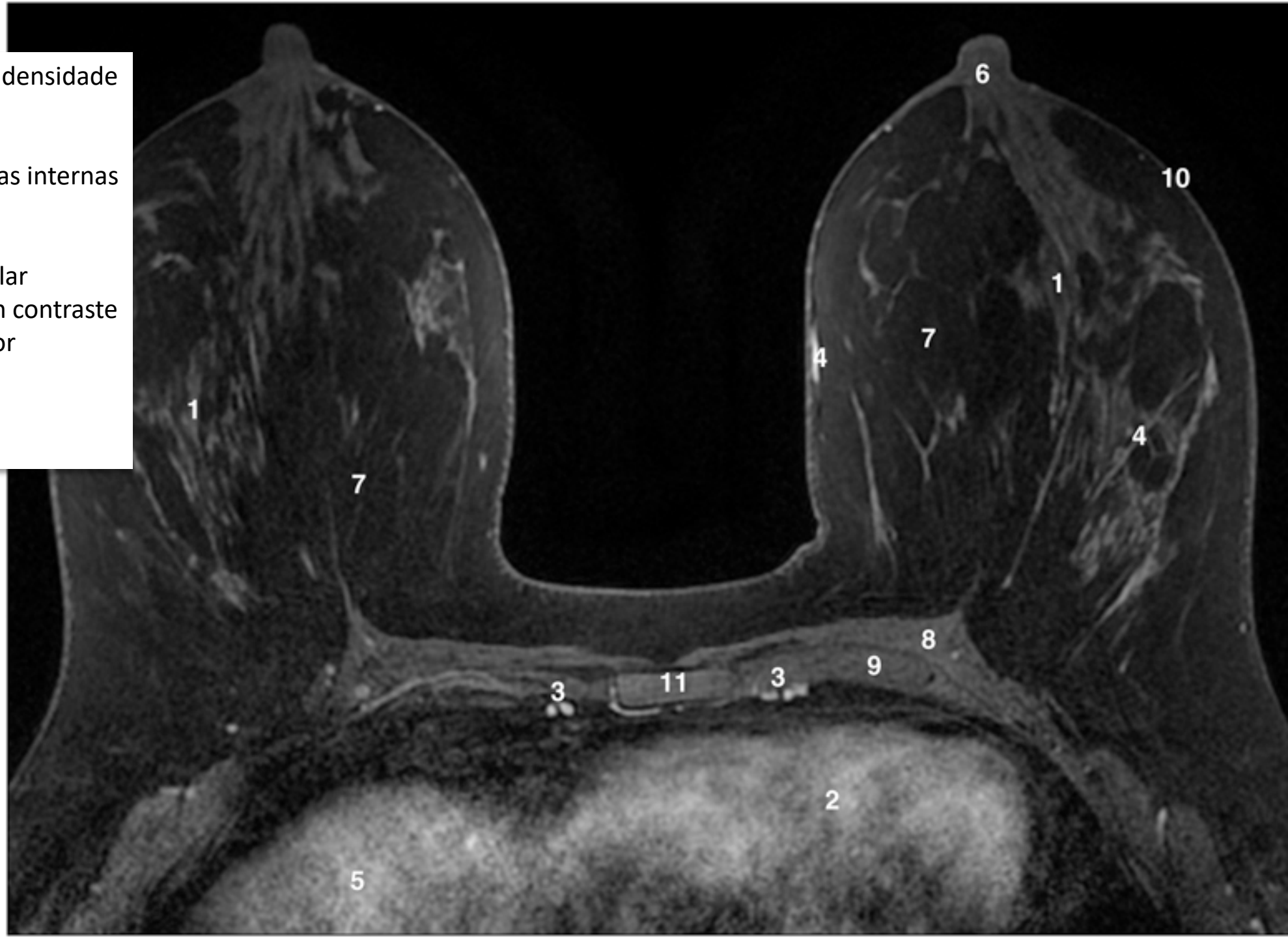
1. Vaso sanguíneo
2. Músculo peitoral maior
3. Linfonodo
4. Tecido fibroglandular



29/05/2020



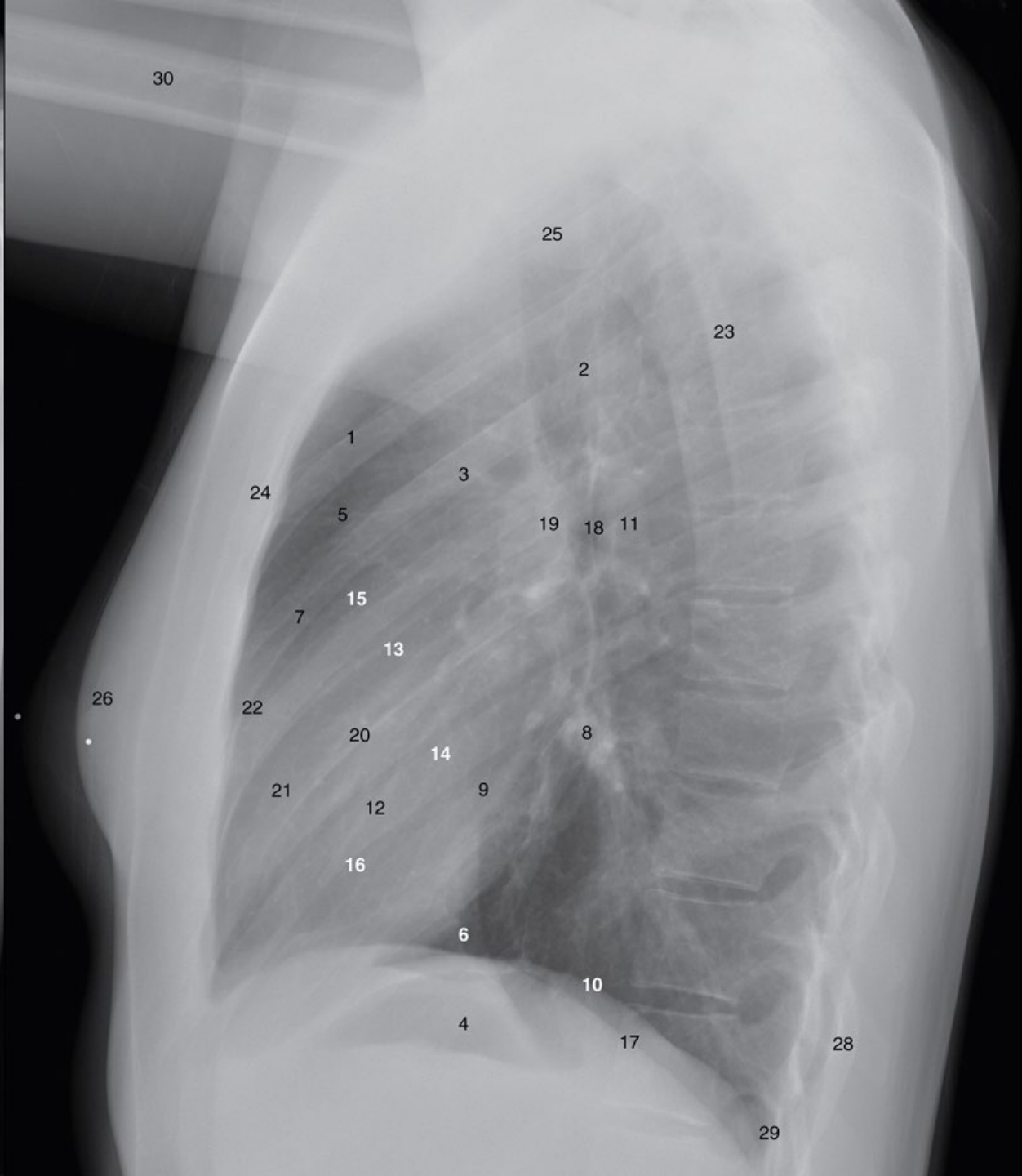
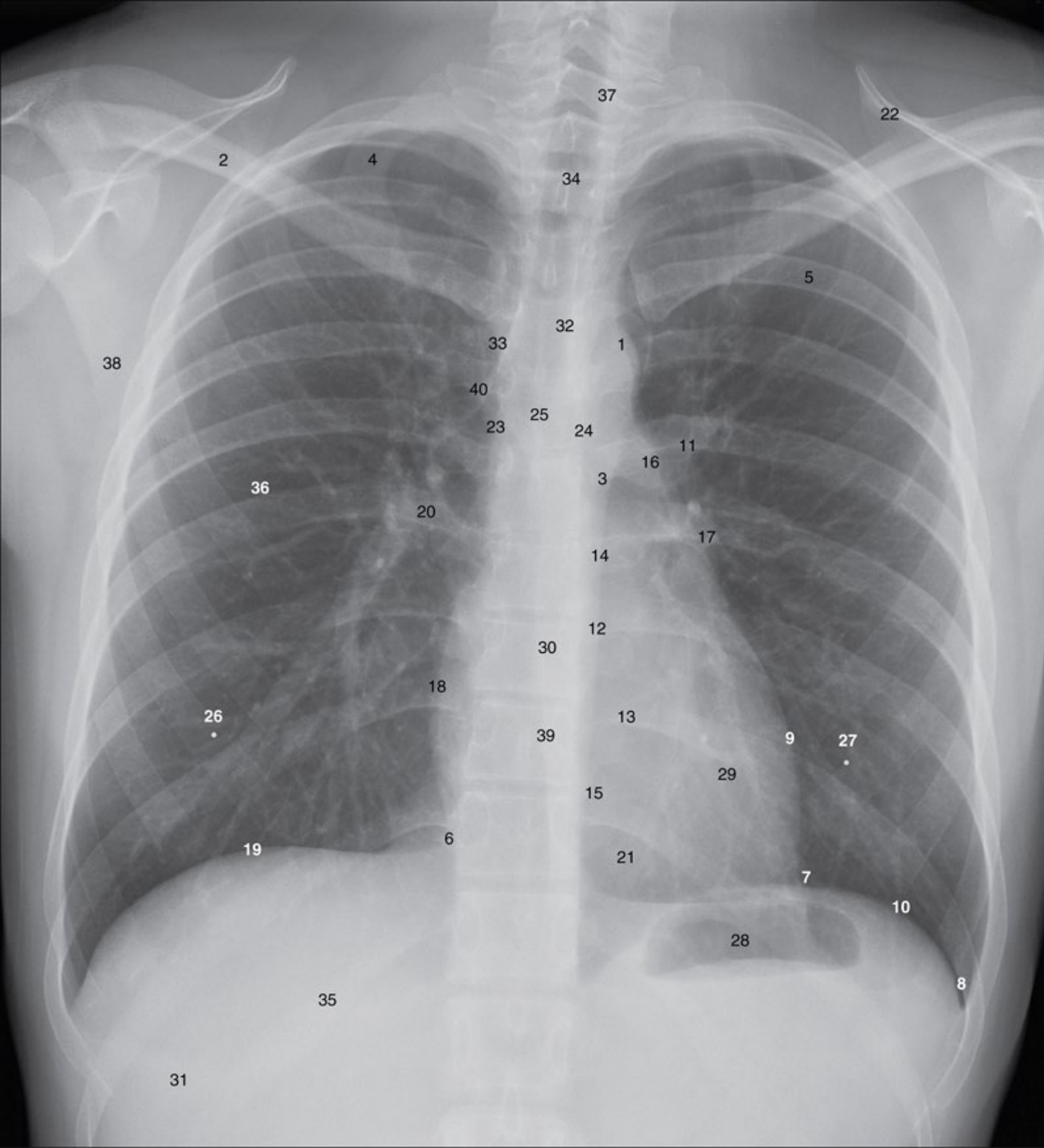
1. Tecido fibroglandular, densidade difusa
2. Coração
3. Artéria e veias torácicas internas
4. Vasos intramamários
5. Fígado
6. Complexo papilo areolar
7. Gordura mamária sem contraste
8. Músculo peitoral maior
9. Costela
10. Pele
11. Corpo do esterno





# Exames de imagens

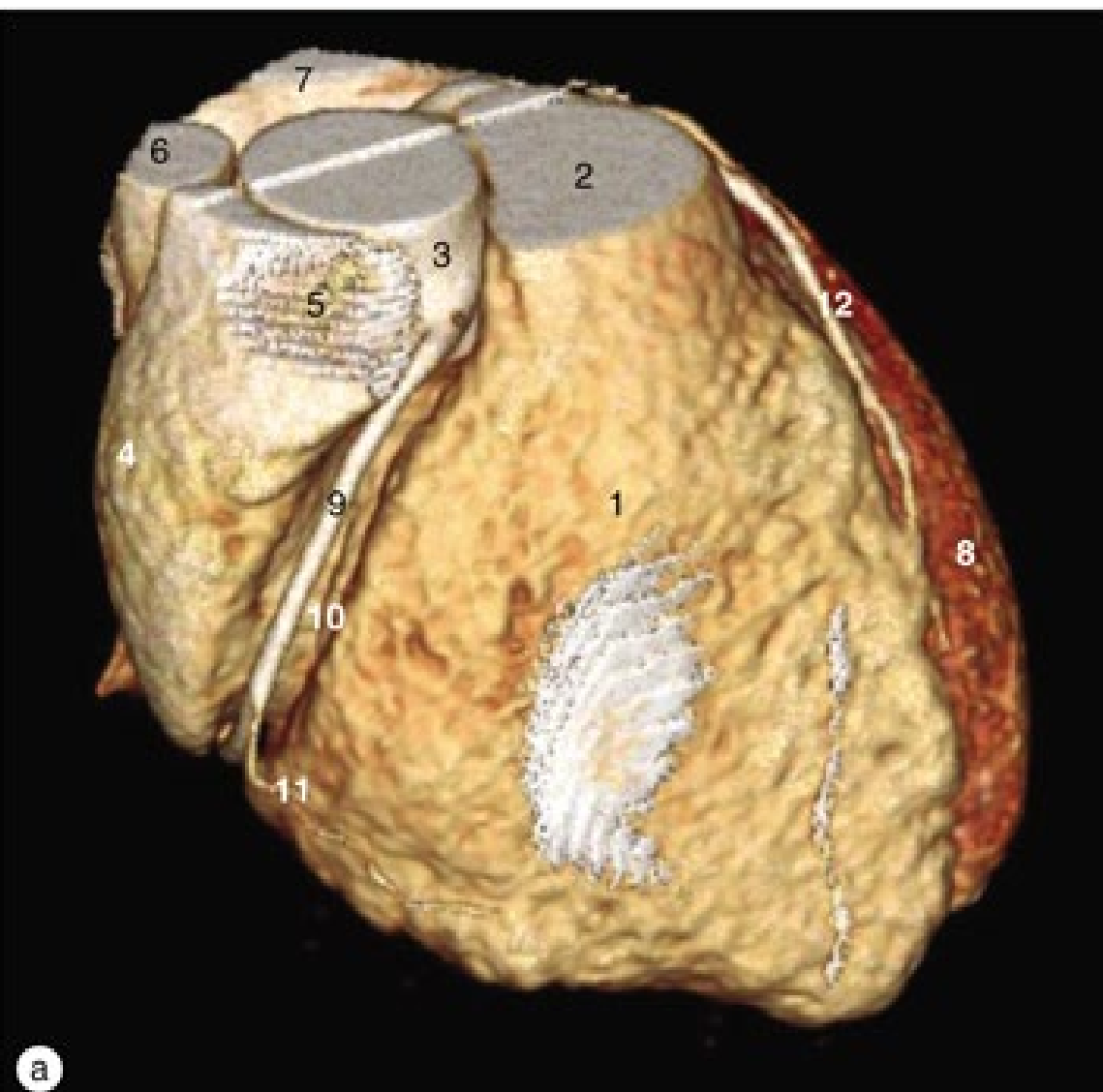
- Encéfalo
- Crânio
- Pescoço
- Coluna vertebral e medula espinhal
- Membro superior
- Mama e axila
- Tórax, Pulmões, mediastino (Dra. Débora Scardovelli)
- Vasos do coração
- Abdome
- Pelve
- Ultrassonografia do abdome superior
- Ultrassonografia de abdome e pelve
- Quadril
- Membros inferiores
- Exames funcionais



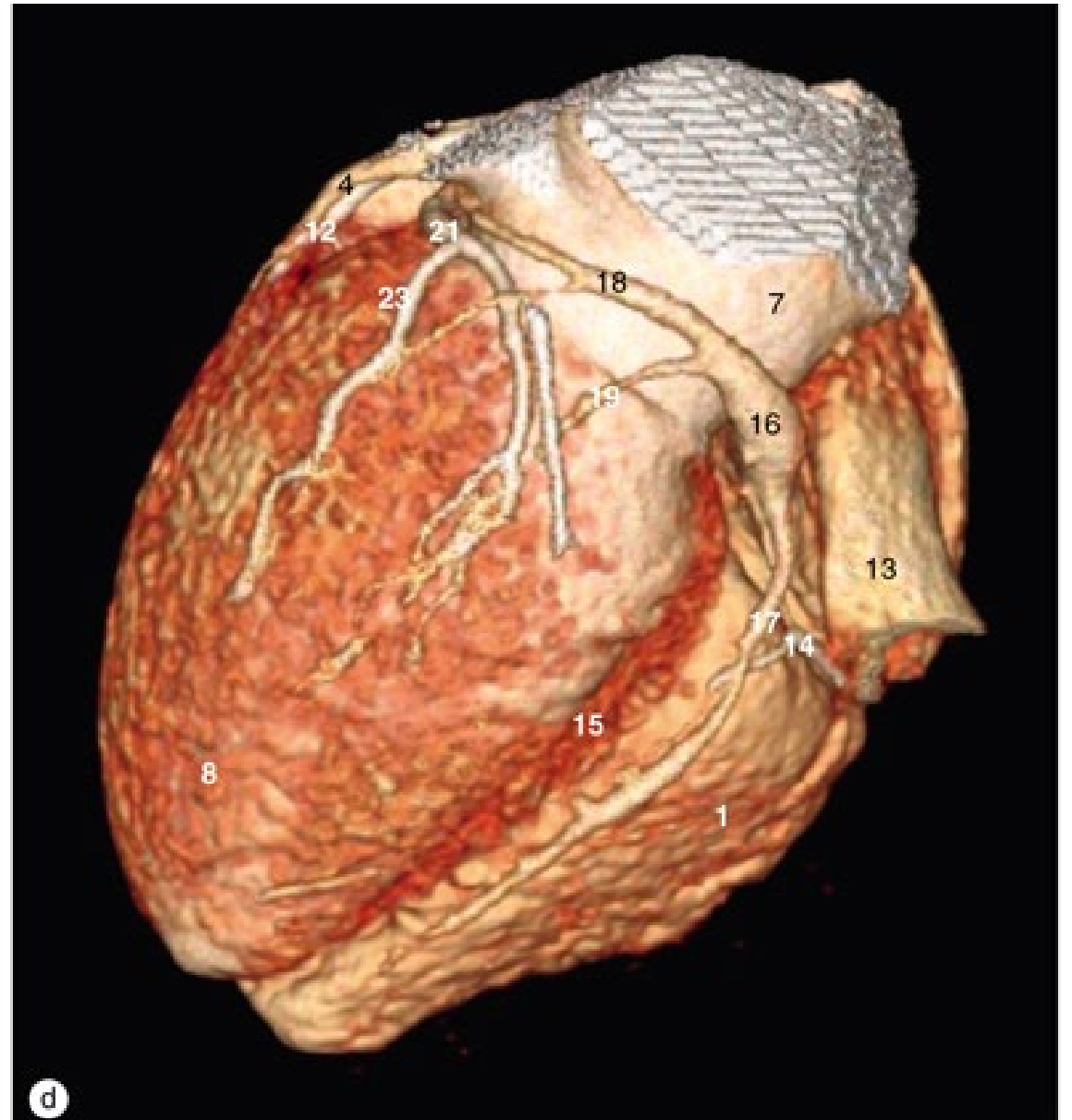
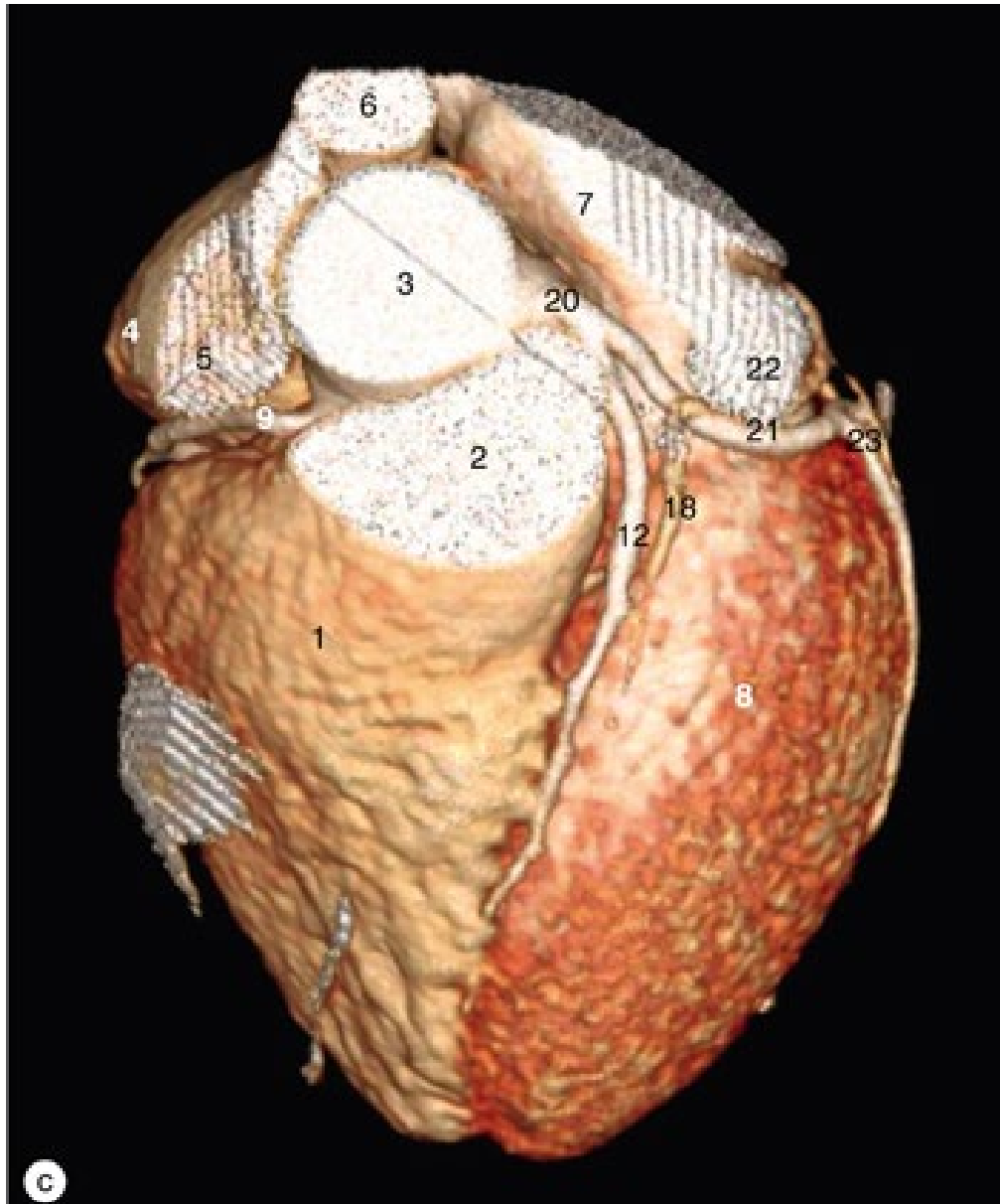
# Exames de imagens

- Encéfalo
- Crânio
- Pescoço
- Coluna vertebral e medula espinhal
- Membro superior
- Mama e axila
- Tórax, Pulmões, mediastino
- **Vasos do coração**
- Abdome
- Pelve
- Ultrassonografia do abdome superior
- Ultrassonografia de abdome e pelve
- Quadril
- Membros inferiores
- Exames funcionais

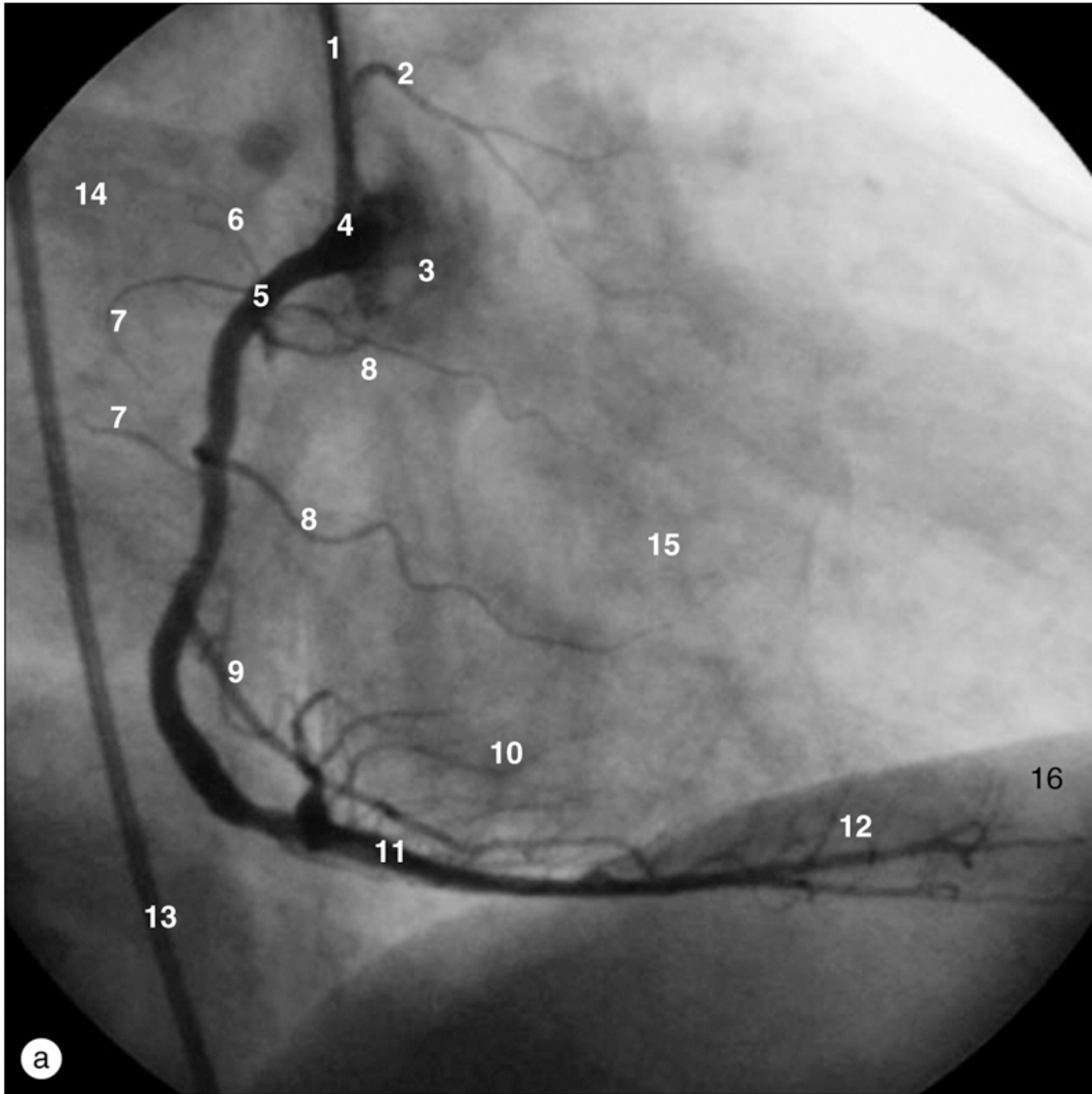
Coração, imagens de TC em reconstrução 3D. (a) Vista anterior. (b) Inferolateral direita.



Coração, imagens de TC em reconstrução 3D. (c) Superolateral esquerda. (d) Vista posteroinferior.



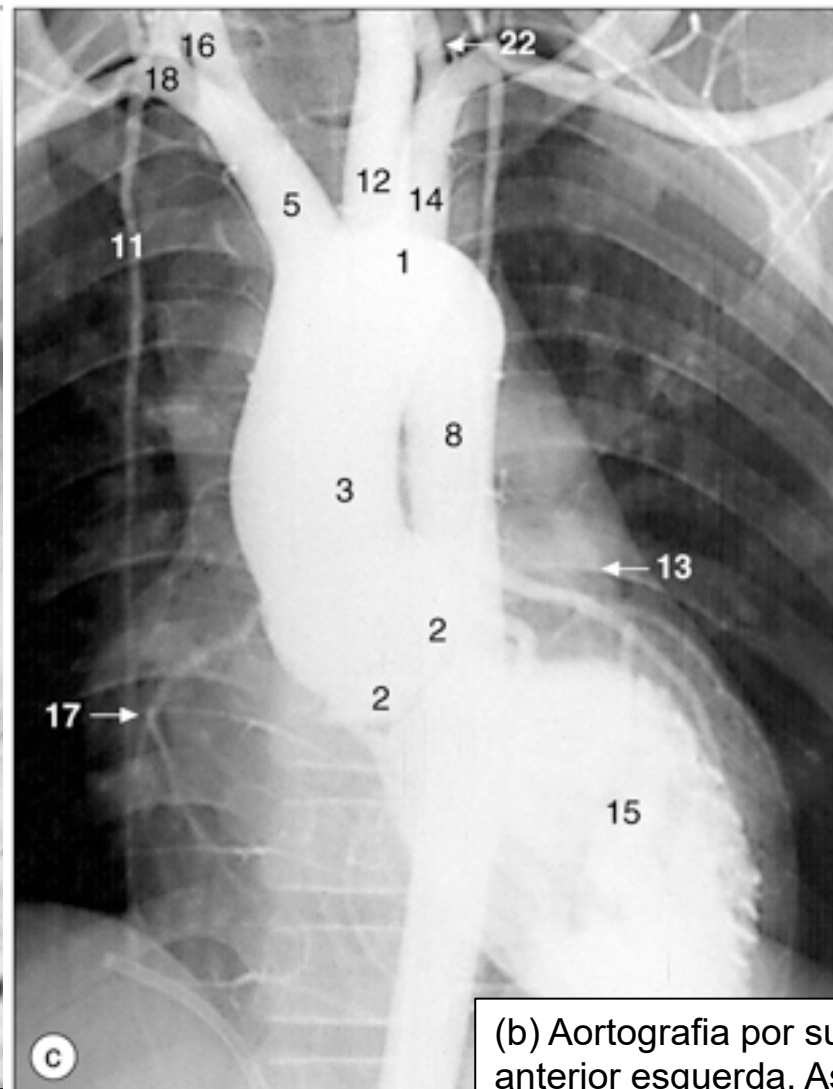
1. Cateter na parte ascendente da aorta
2. Artéria do cone direito
3. Seio direito da aorta
4. Óstio da artéria coronária direita
5. Artéria coronária direita
6. Artéria do nó sinoatrial
7. Ramos atriais direitos
8. Ramos ventriculares direitos
9. Ramo marginal (agudo)
10. Artéria do nó atrioventricular
11. Ramo interventricular posterior
12. Ramos perfurantes septais (a partir da artéria interventricular posterior)
13. Cateter na parte descendente torácica da aorta
14. Área do átrio direito
15. Área do ventrículo direito
16. Ápice do ventrículo esquerdo







(a) Aortografia por subtração do arco da aorta, imagem anteroposterior. Nesta imagem, a artéria vertebral (22) tem origem separada do arco, projetada sobre a artéria carótida comum esquerda. Esta é uma variante comum.

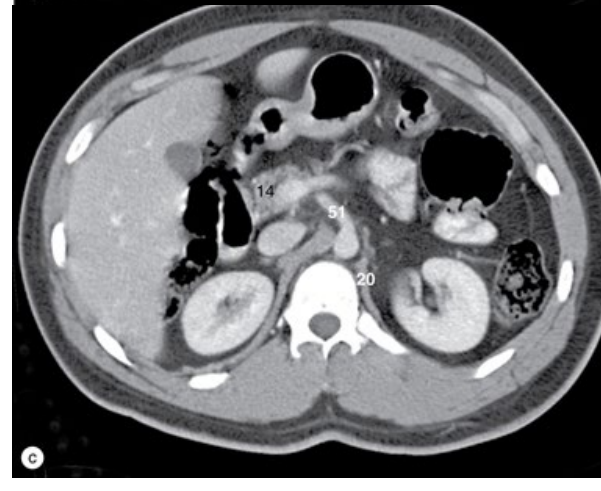
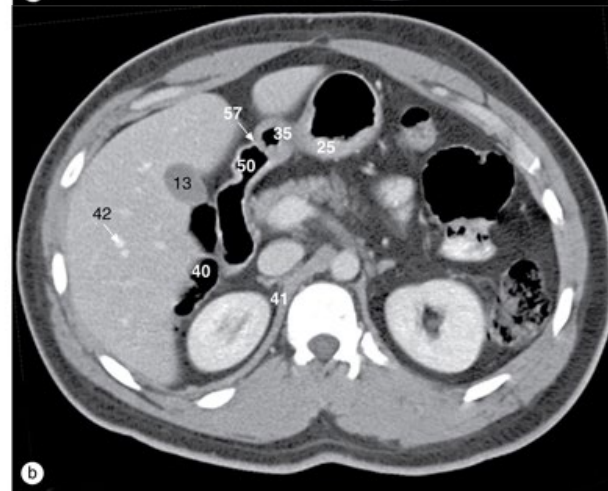
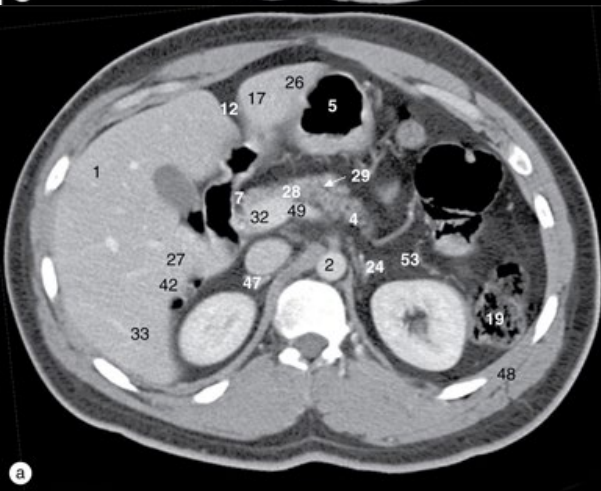
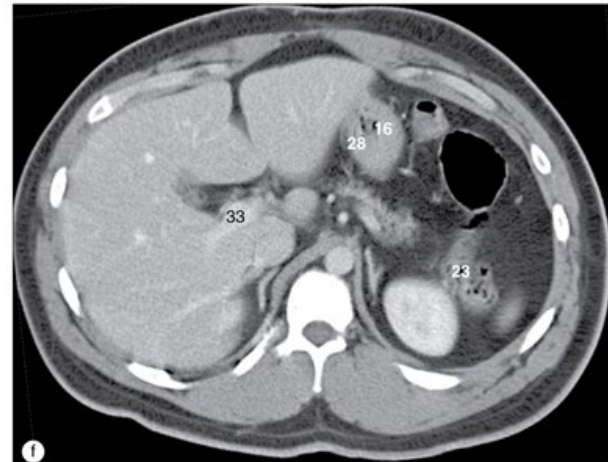
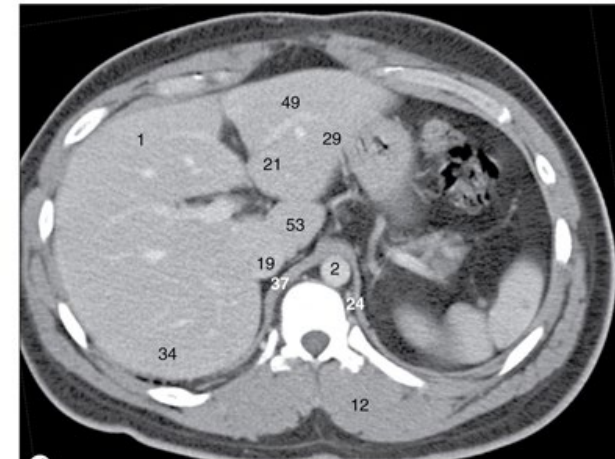
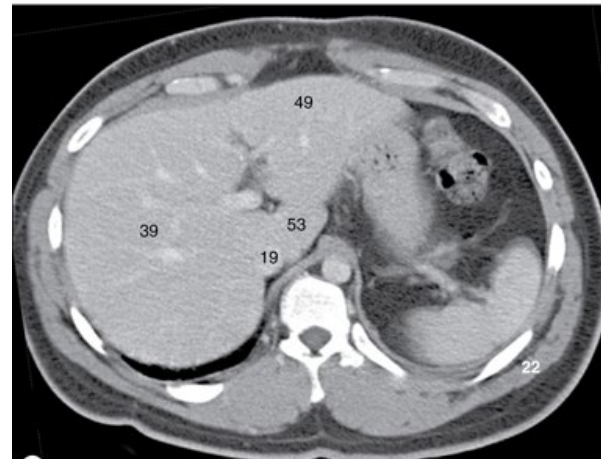
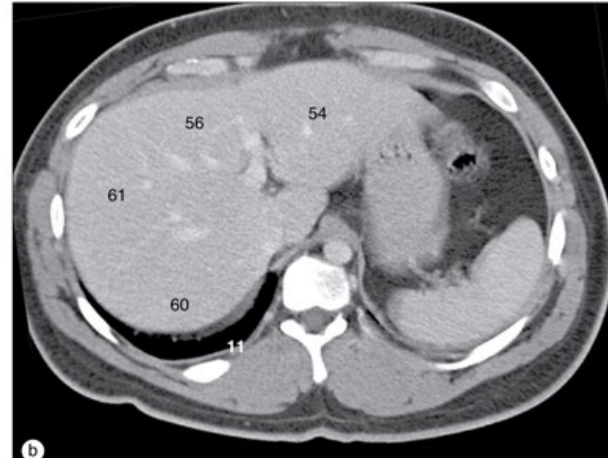
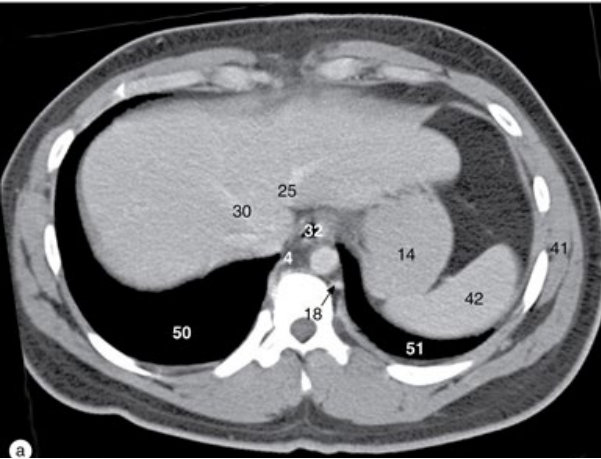


(b) Aortografia por subtração do arco da aorta, imagem oblíqua anterior esquerda. As origens dos ramos supra-aórticos são mais bem mostradas por meio da projeção oblíqua anterior esquerda, para que as origens dos vasos não fiquem sobrepostas. Há muitas variações congênicas na maneira em que os principais vasos surgem do arco da aorta, mas o mais comum é mostrado aqui.

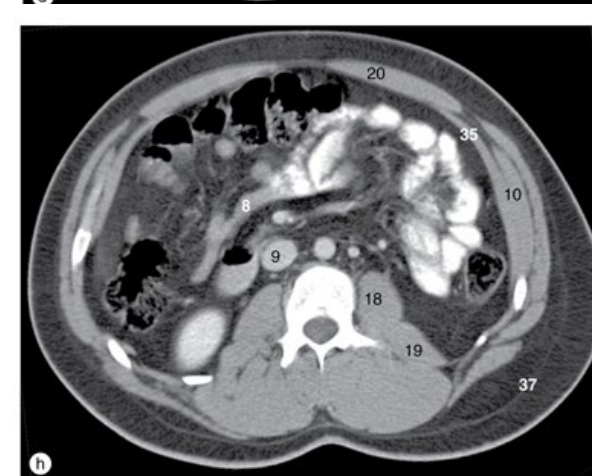
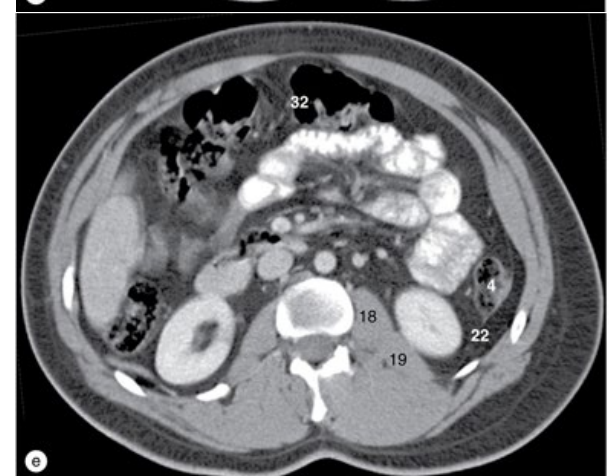
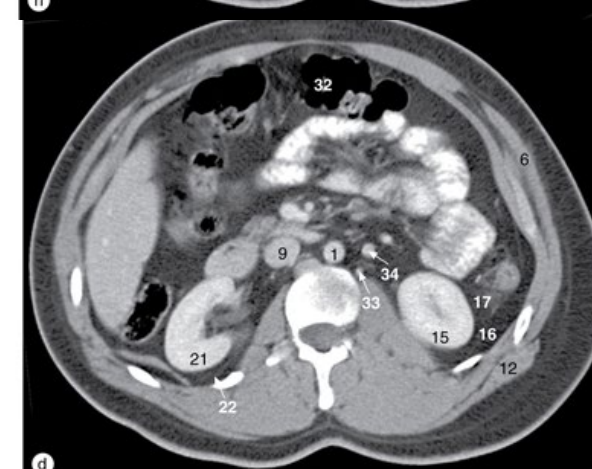
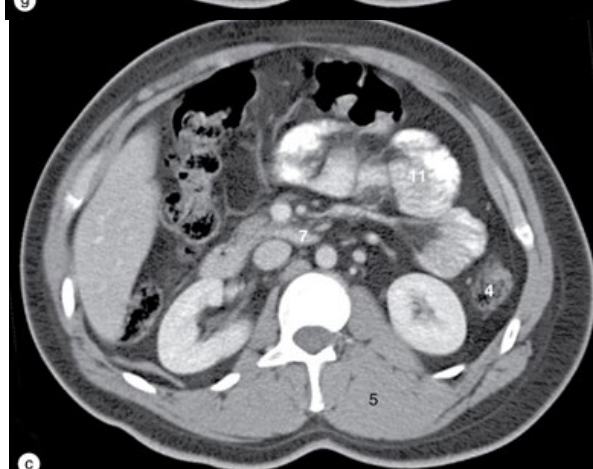
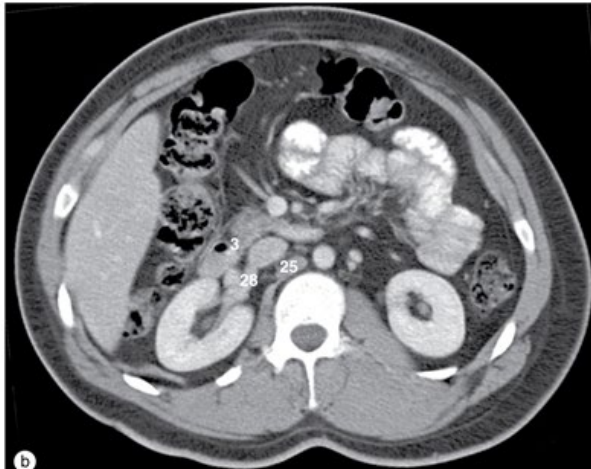
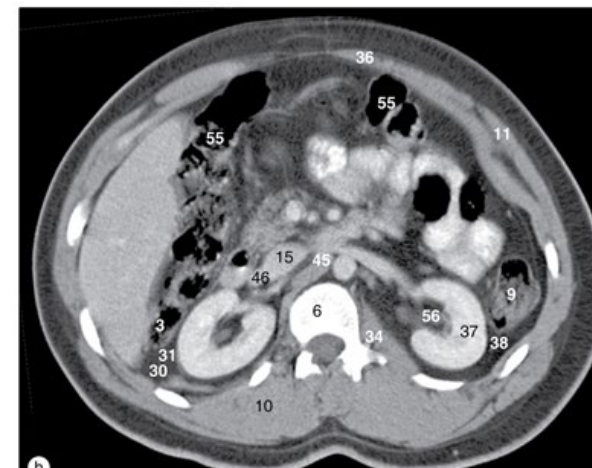
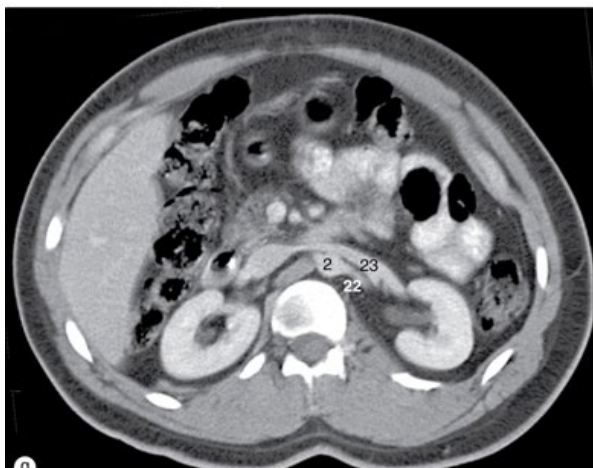
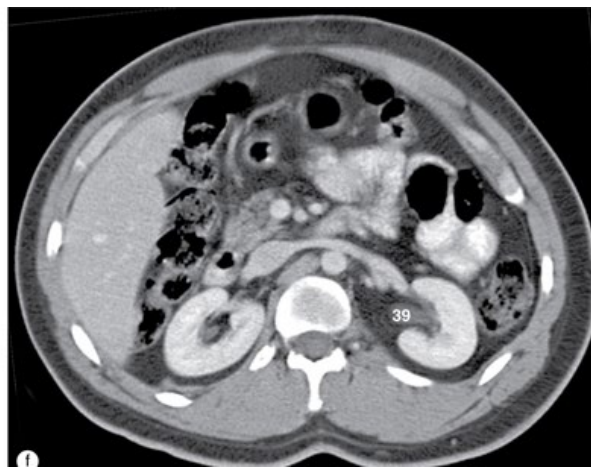
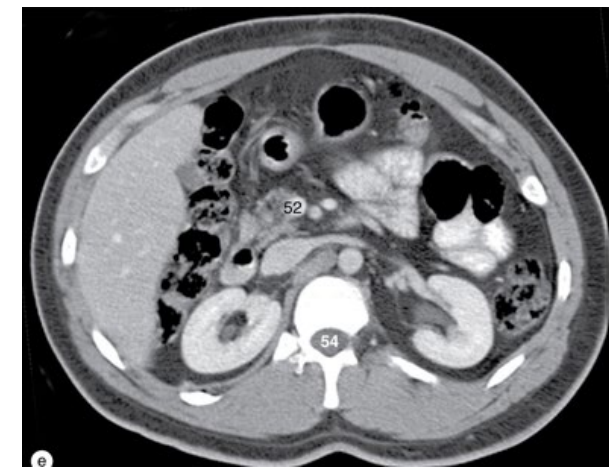


# Exames de imagens

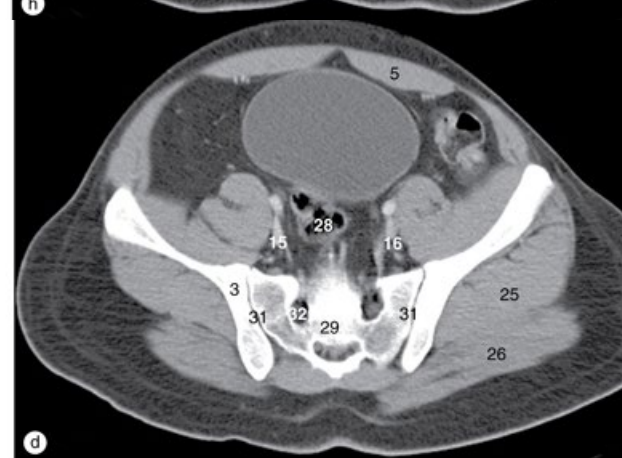
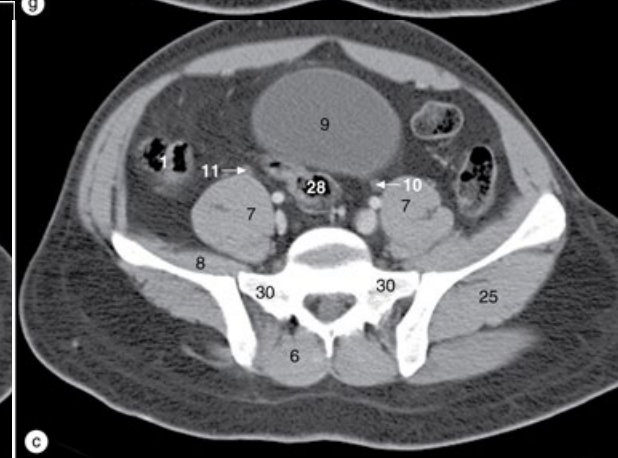
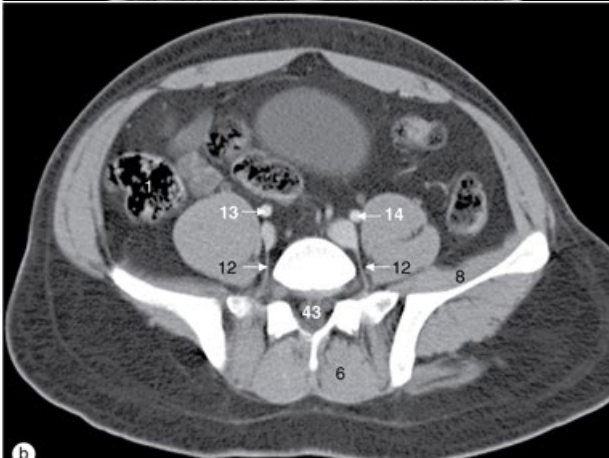
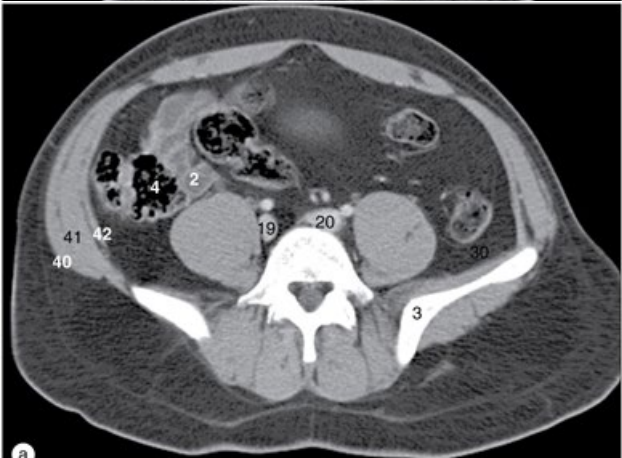
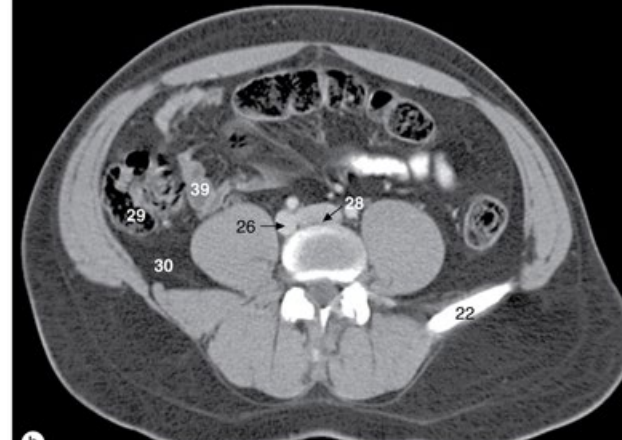
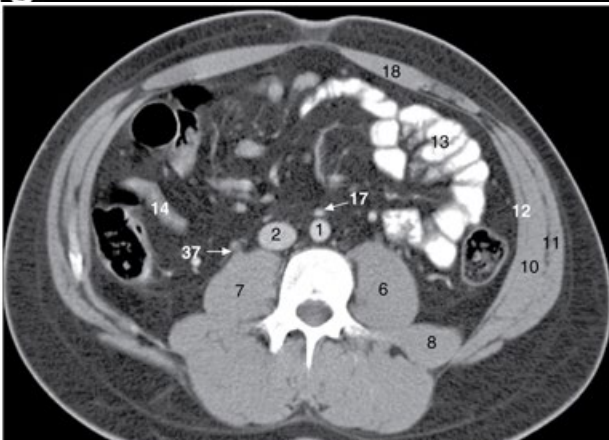
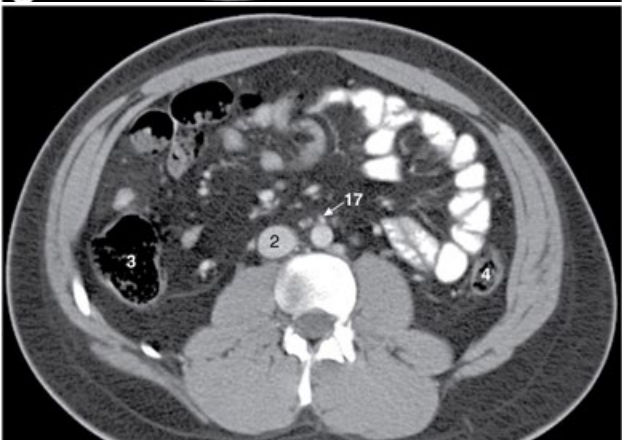
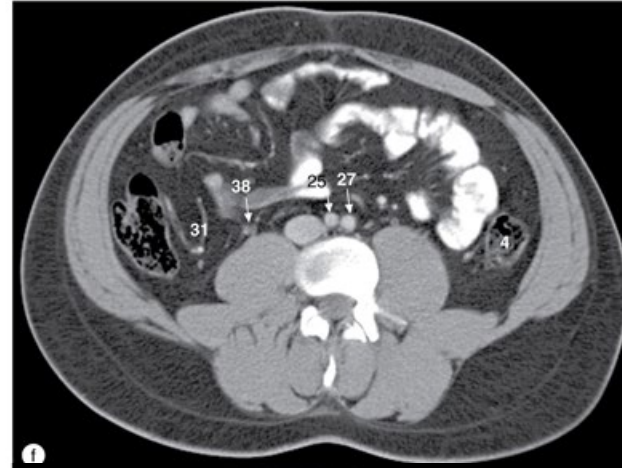
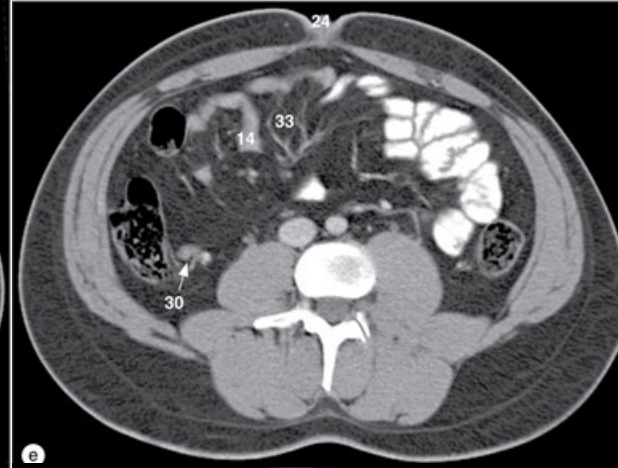
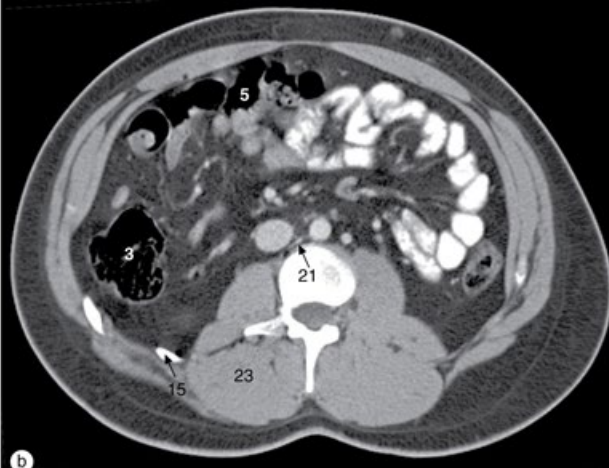
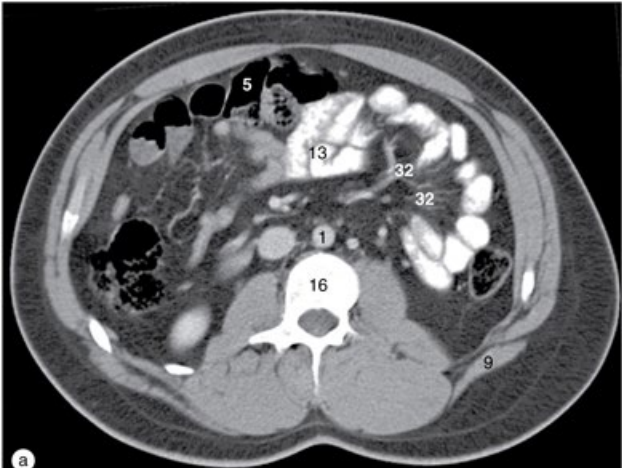
- Encéfalo
- Crânio
- Pescoço
- Coluna vertebral e medula espinhal
- Membro superior
- Mama e axila
- Tórax, Pulmões, mediastino
- Vasos do coração
- Abdome
- Pelve
- Ultrassonografia do abdome superior
- Ultrassonografia de abdome e pelve
- Quadril
- Membros inferiores
- Exames funcionais





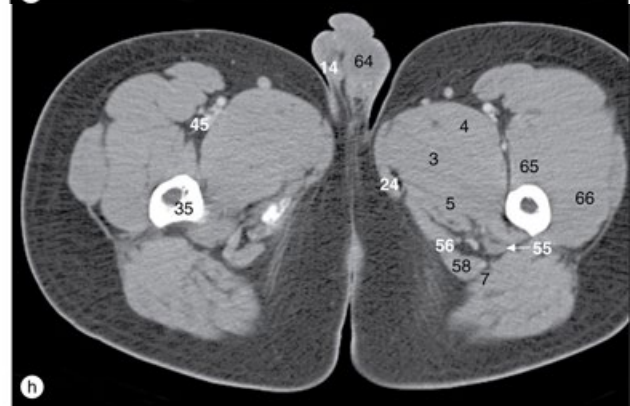
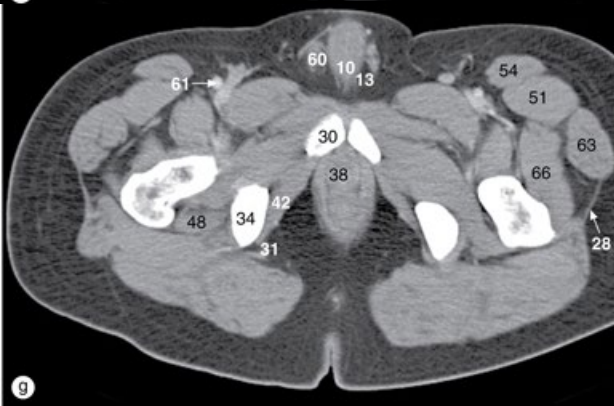
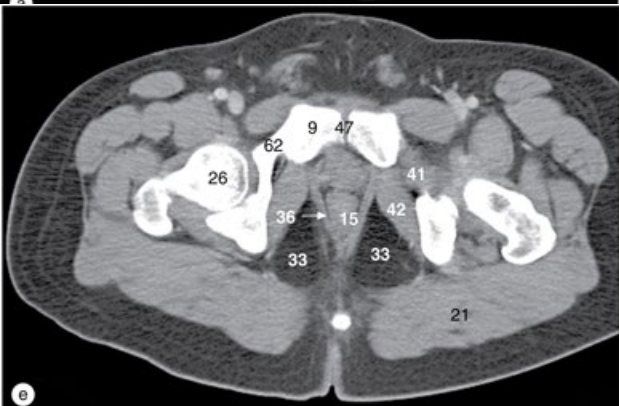
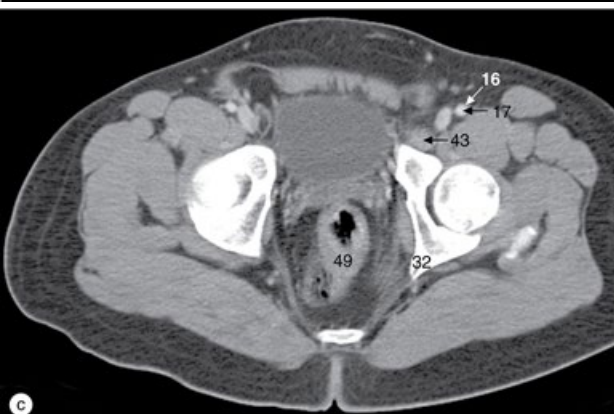
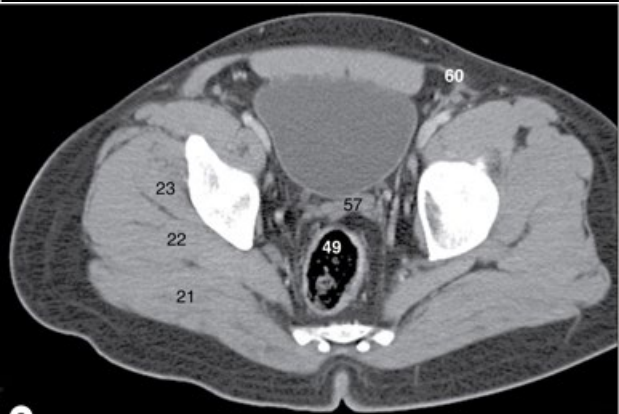
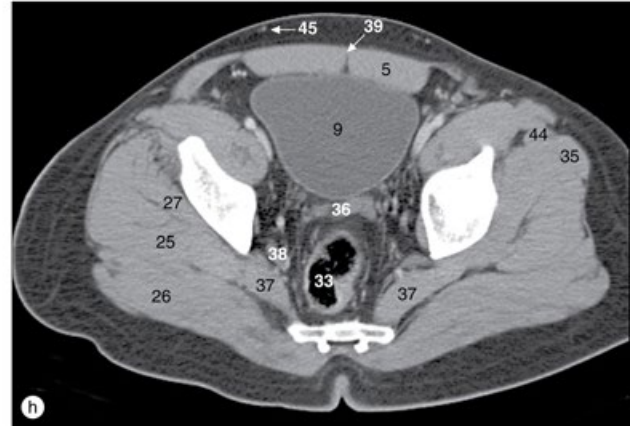
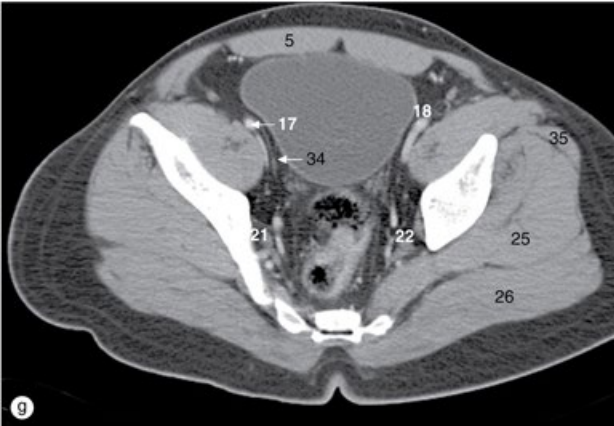
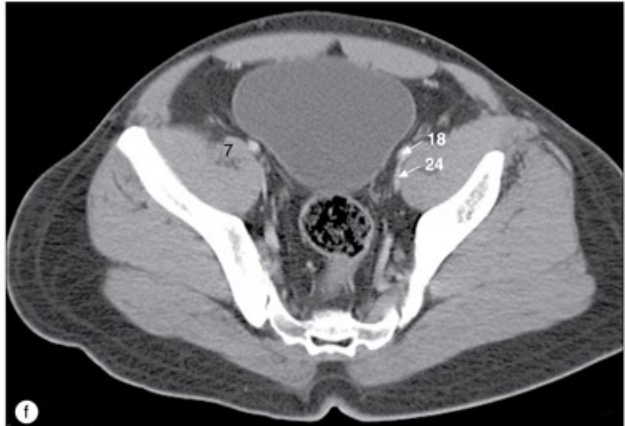
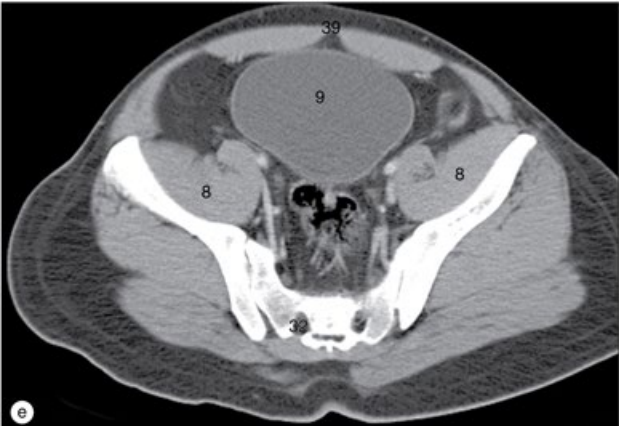




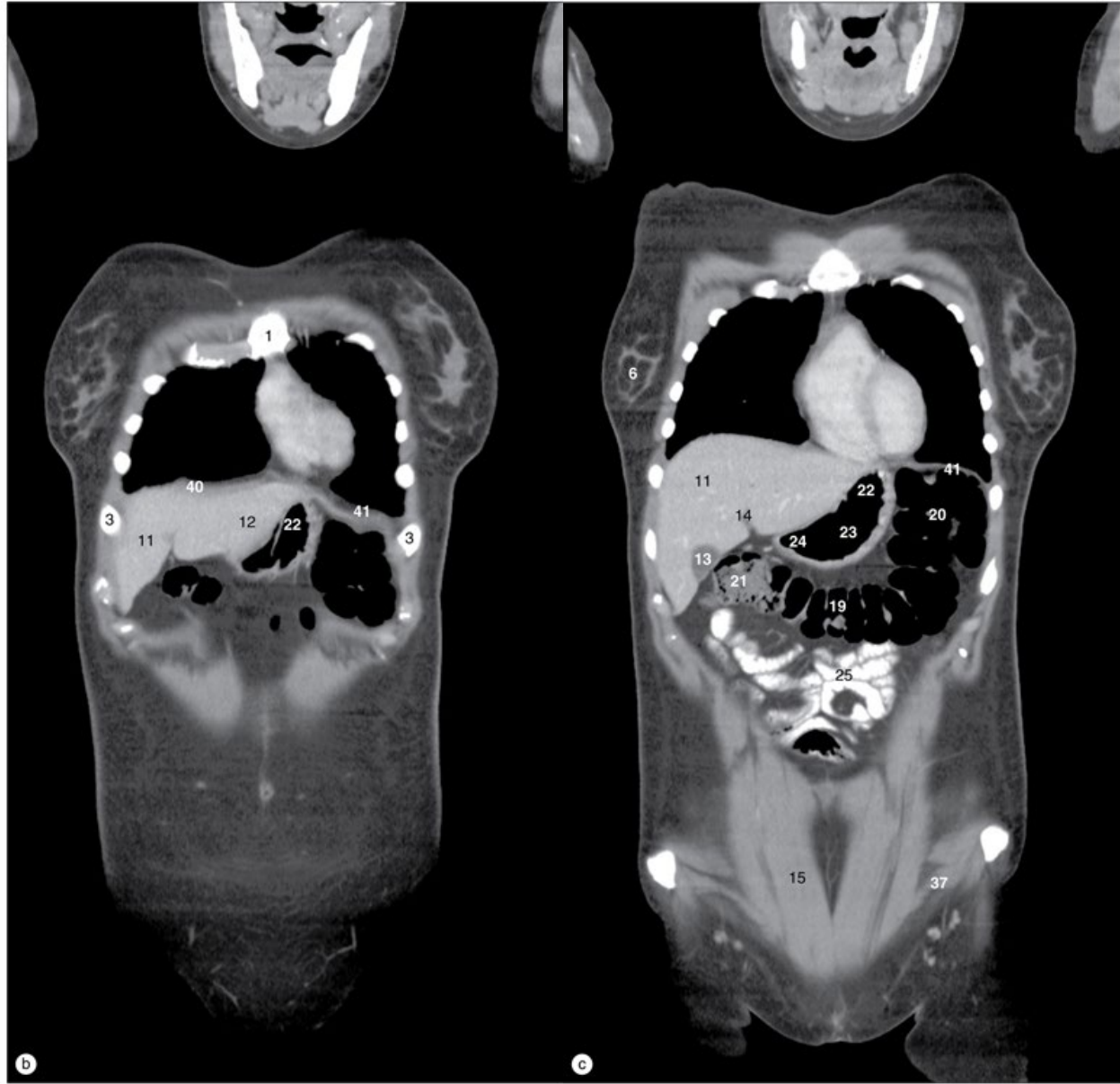


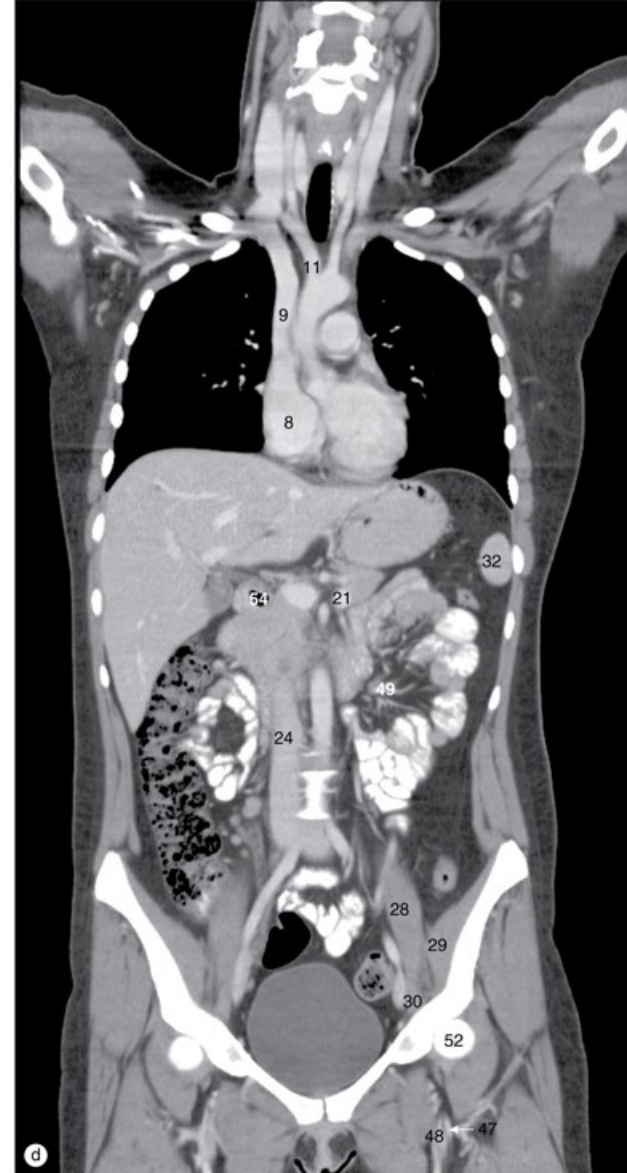
29/05/2020



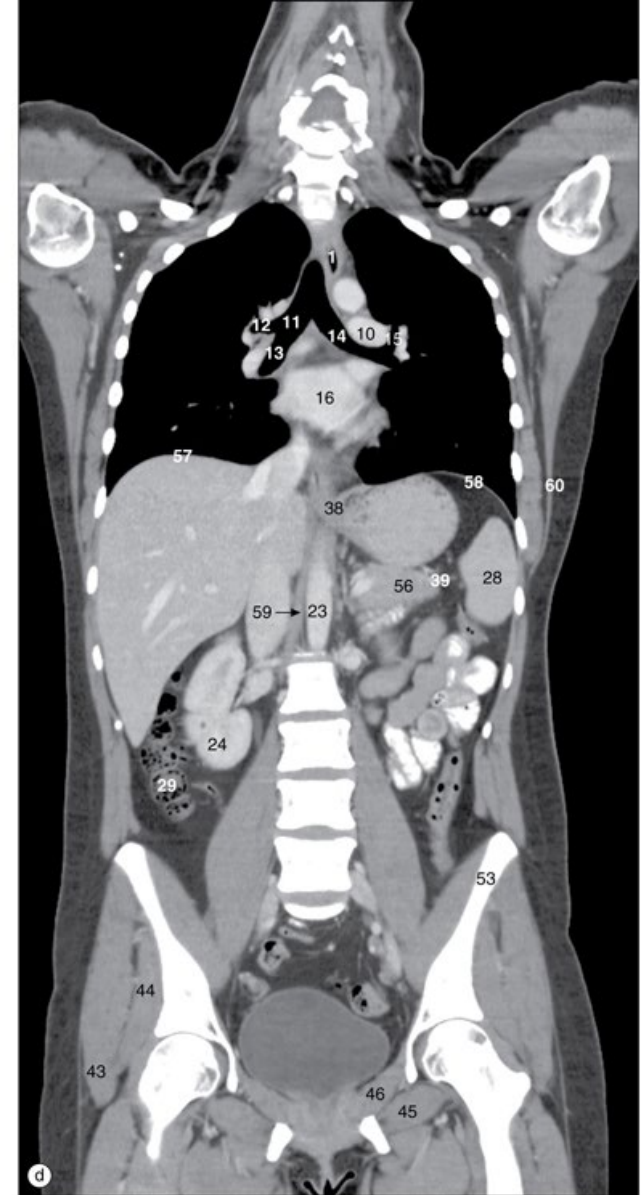
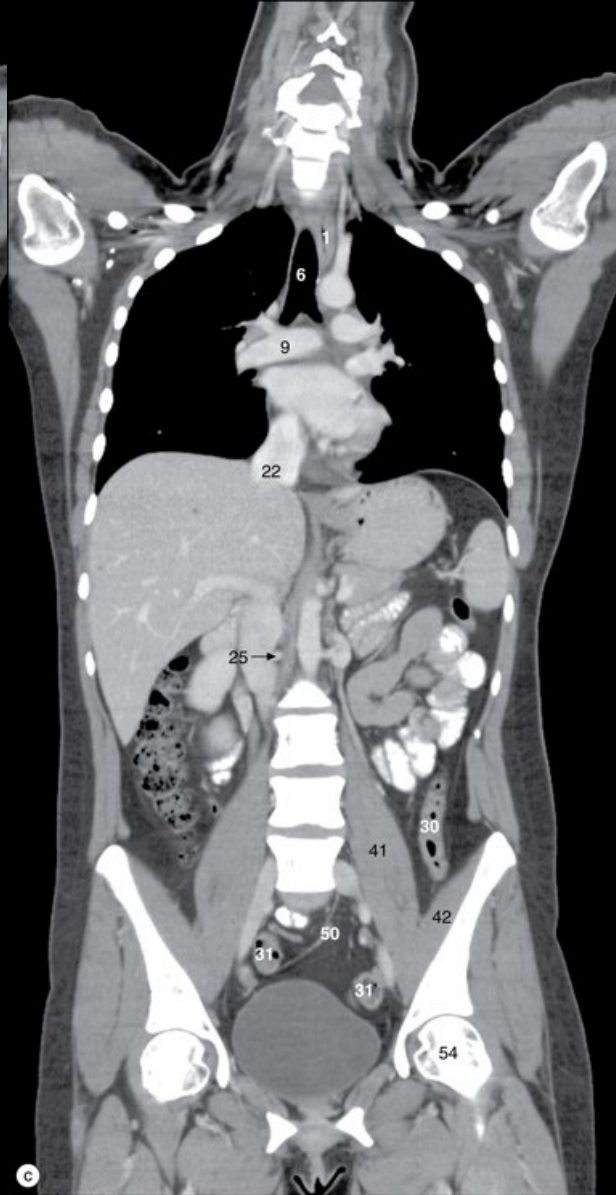
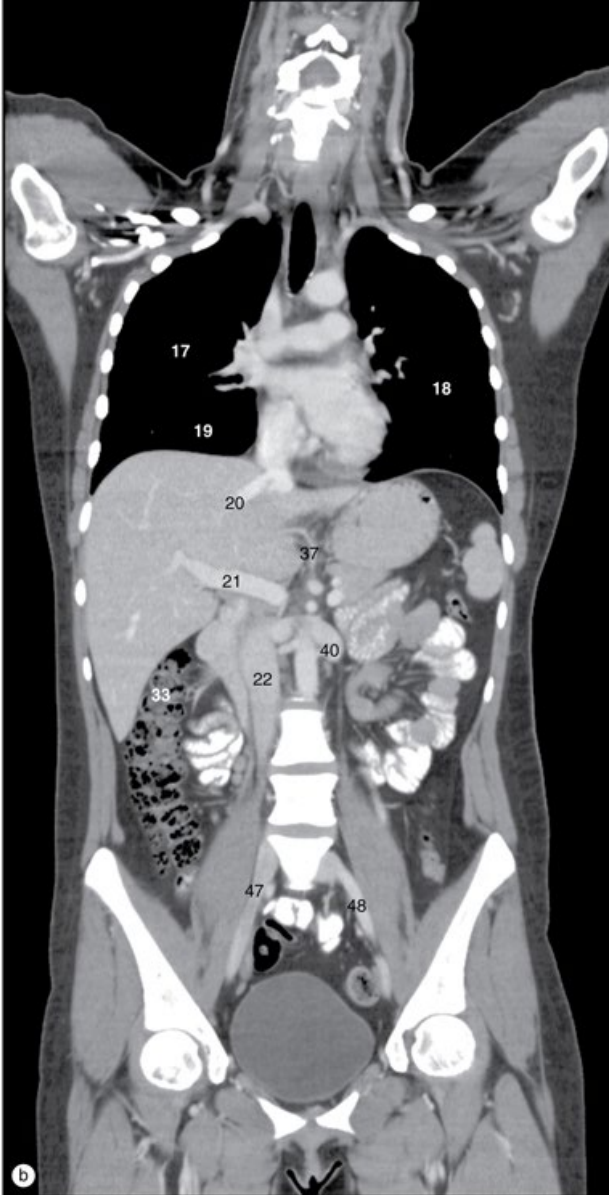




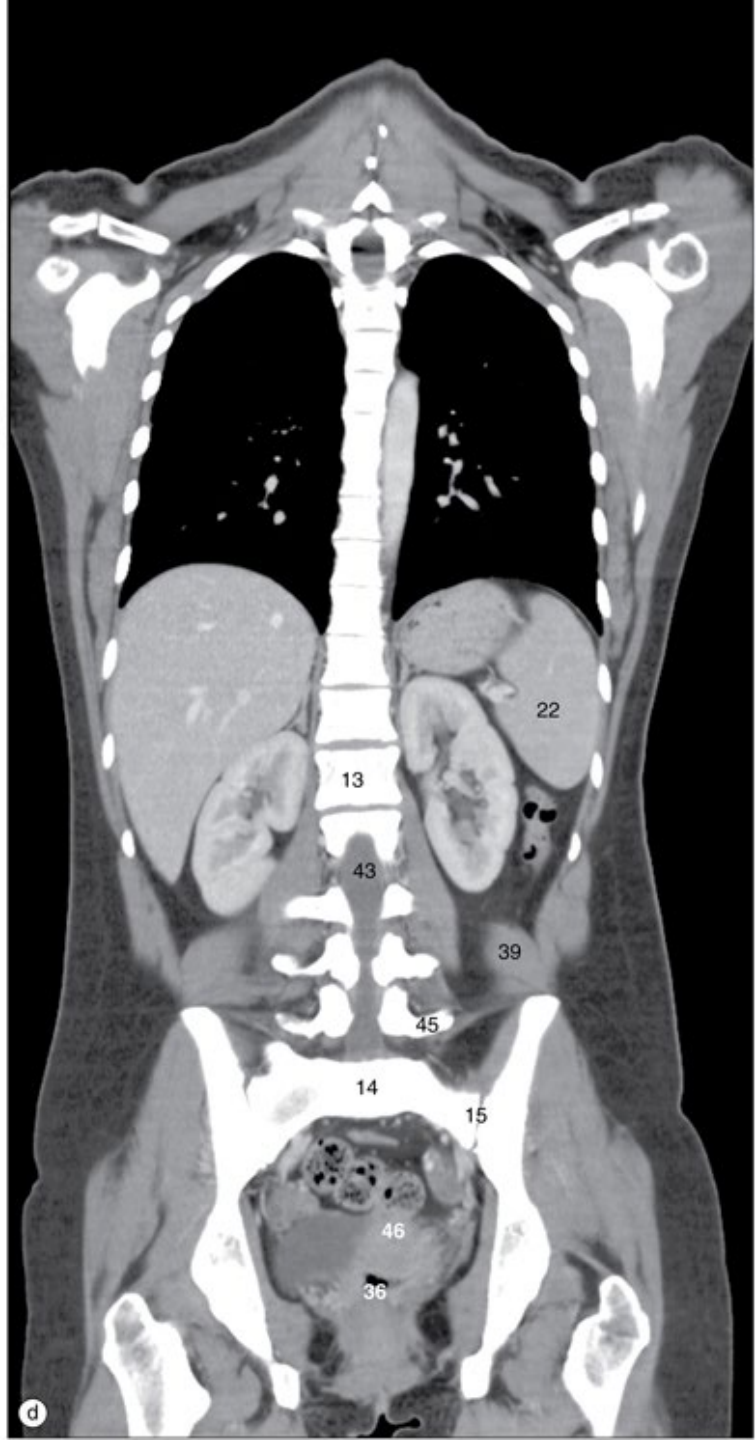
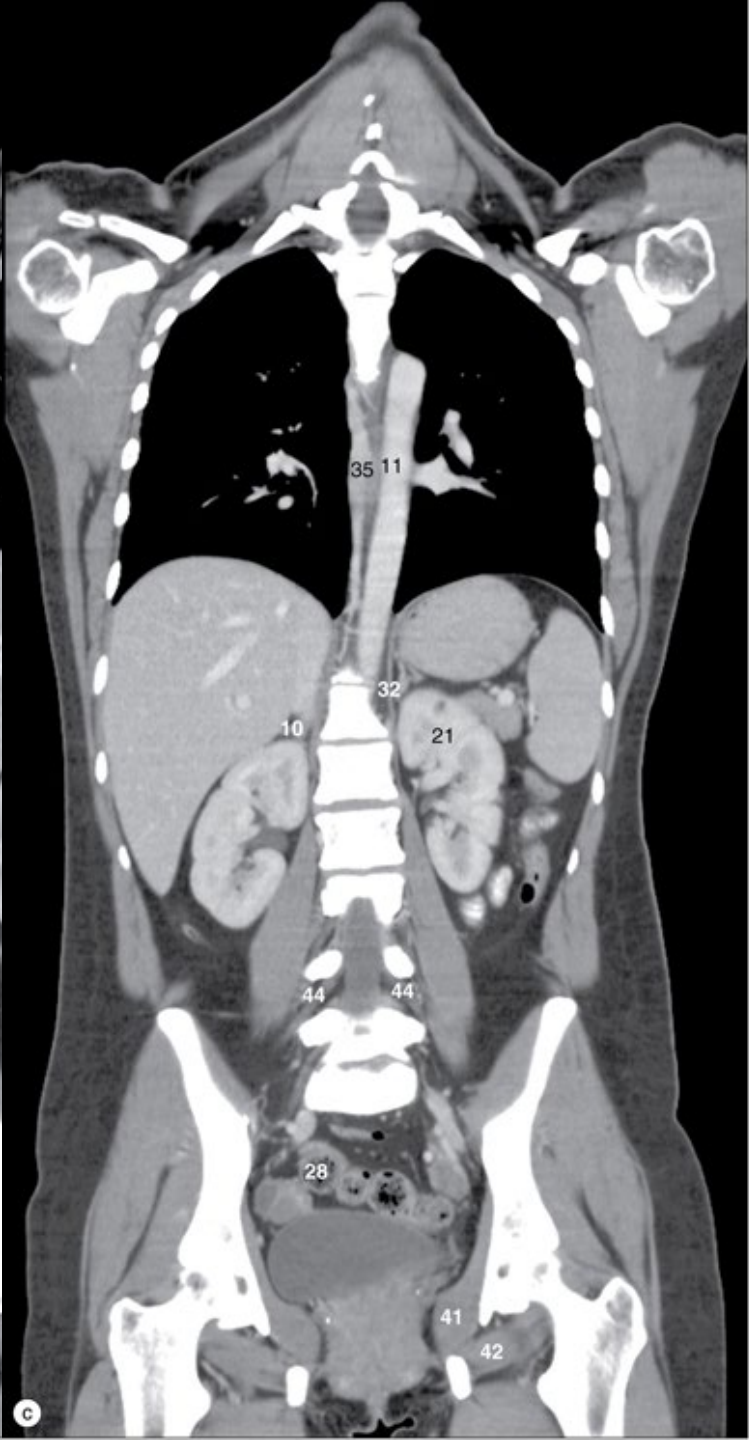
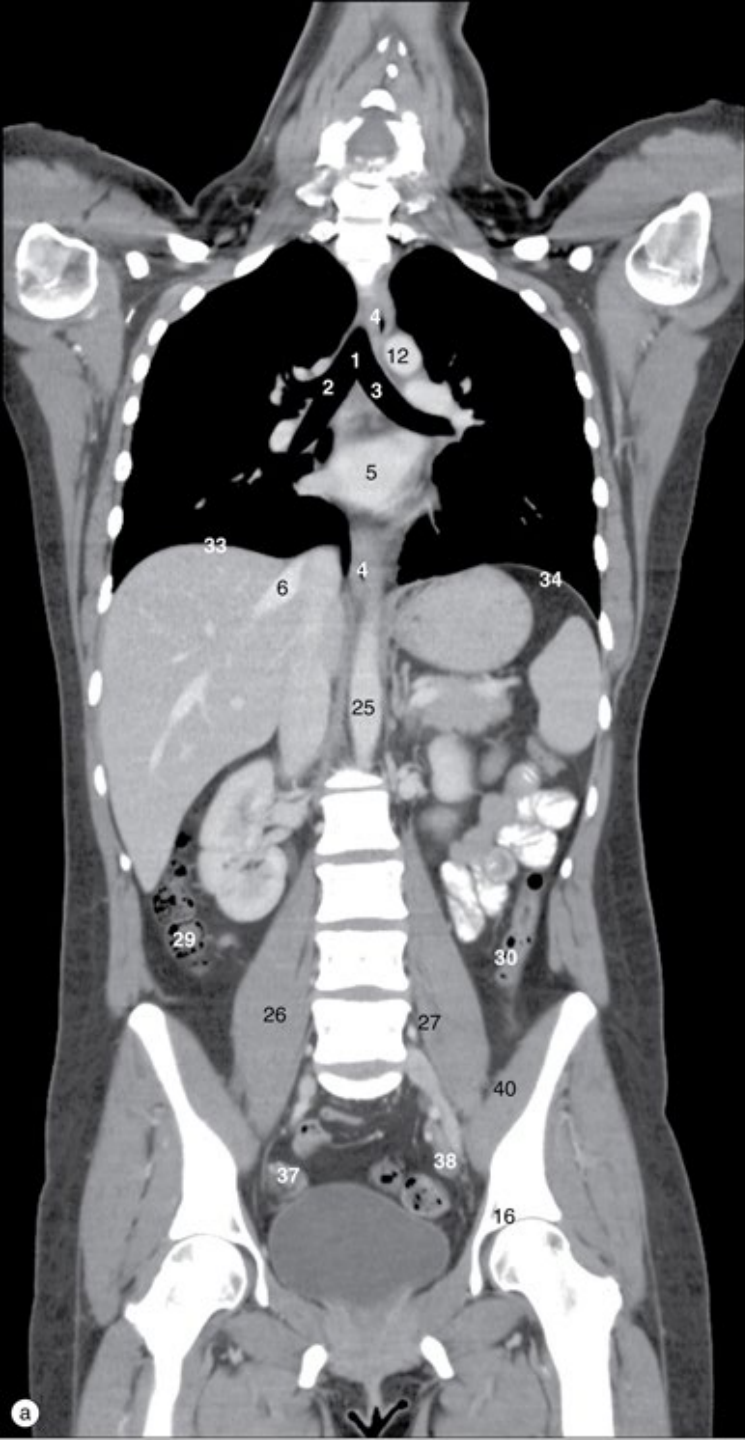


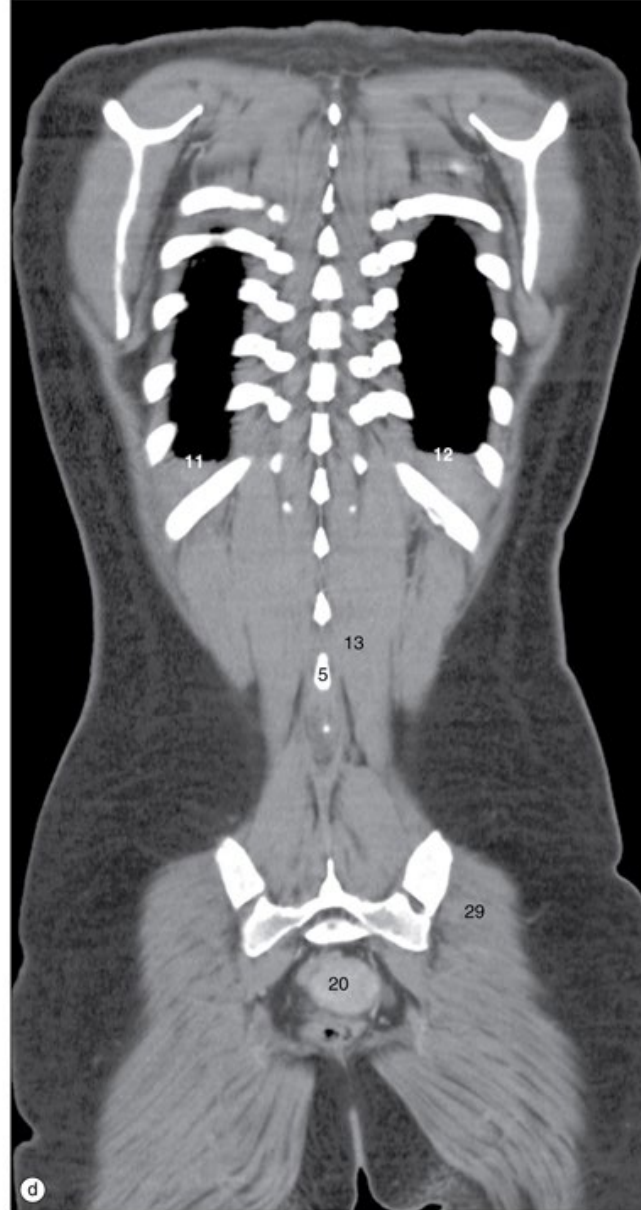
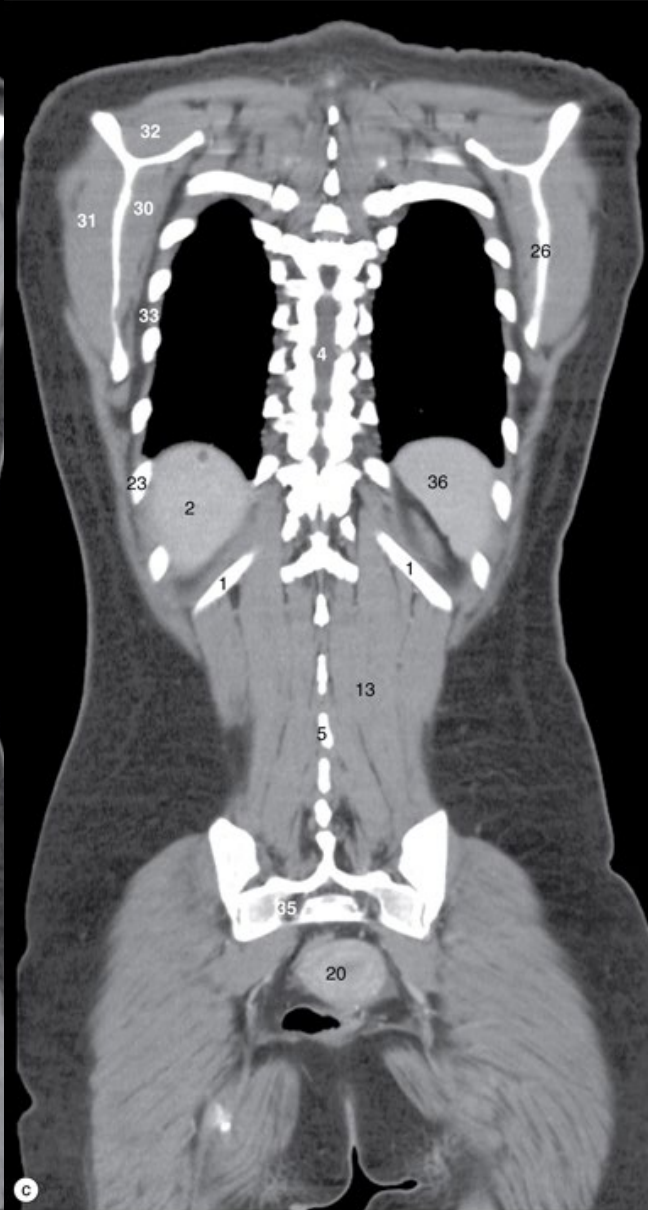
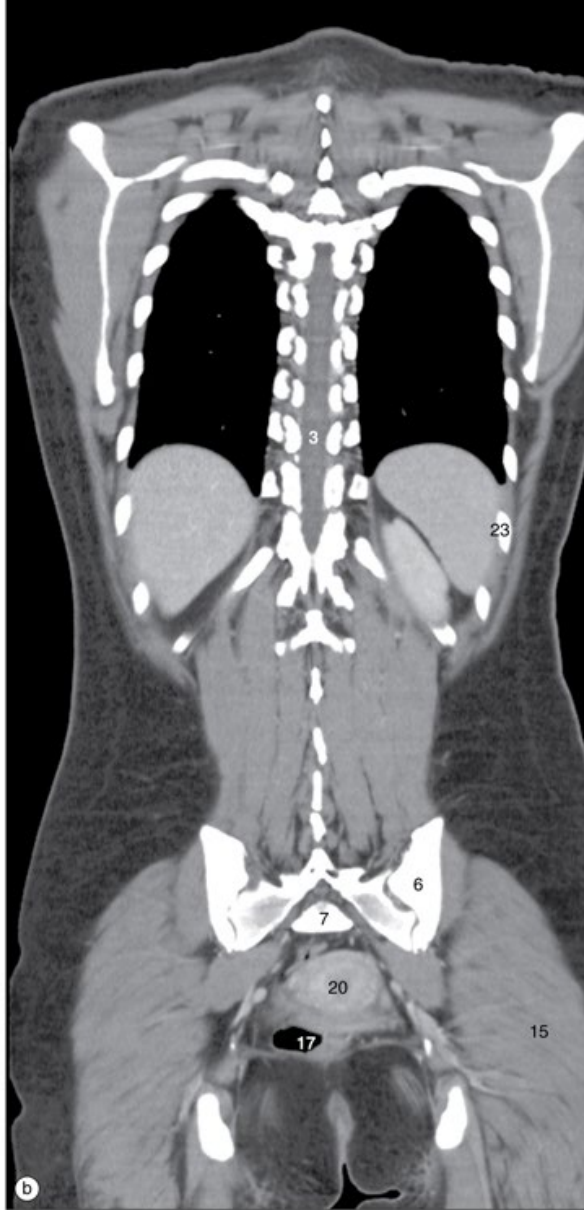
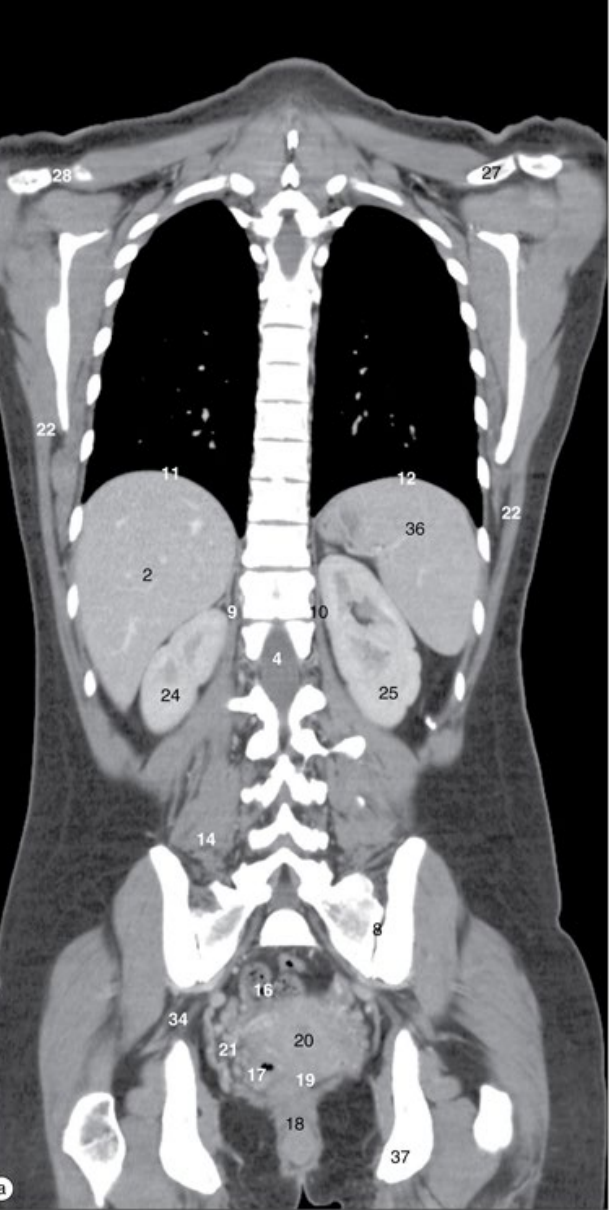










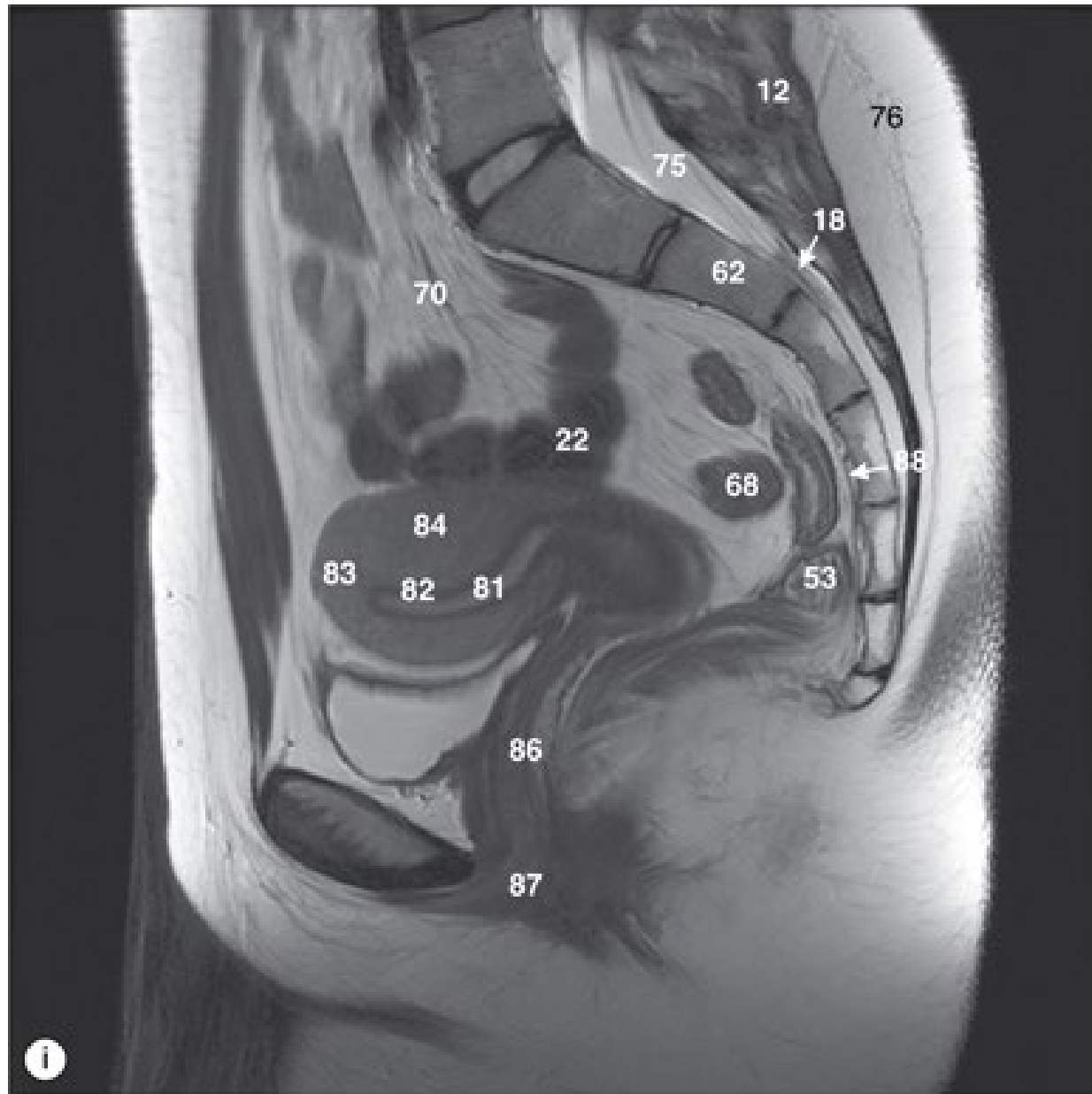




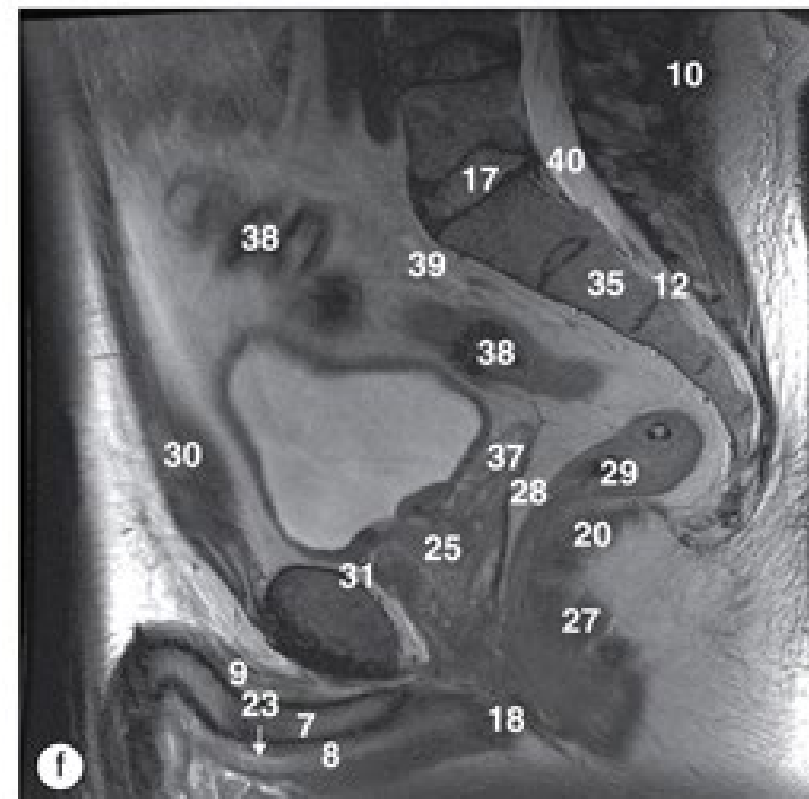
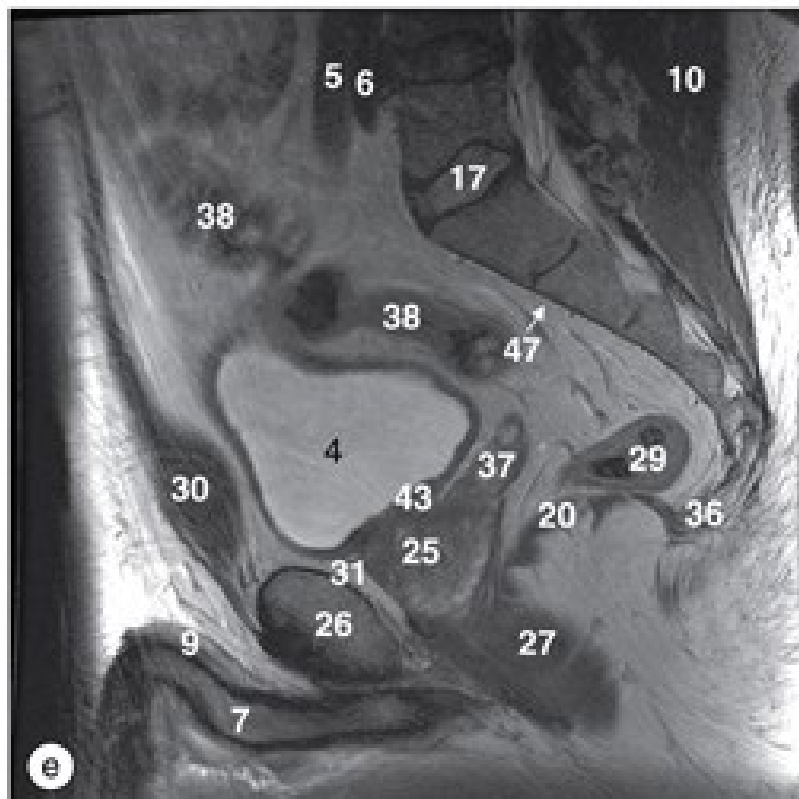


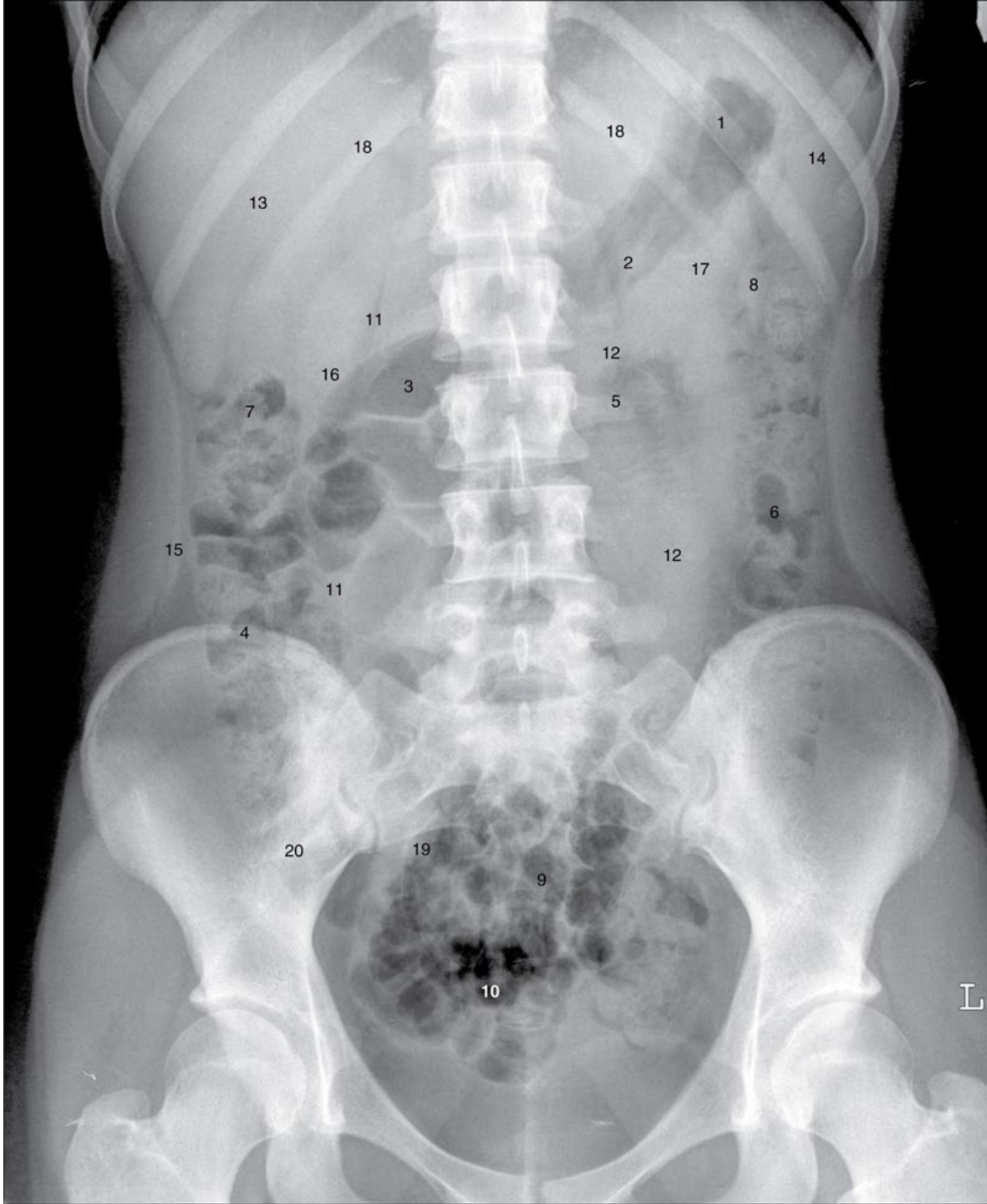


Pelve feminina, imagens de RM sagitais e sequenciais, ponderadas em T2, da direita para a esquerda.

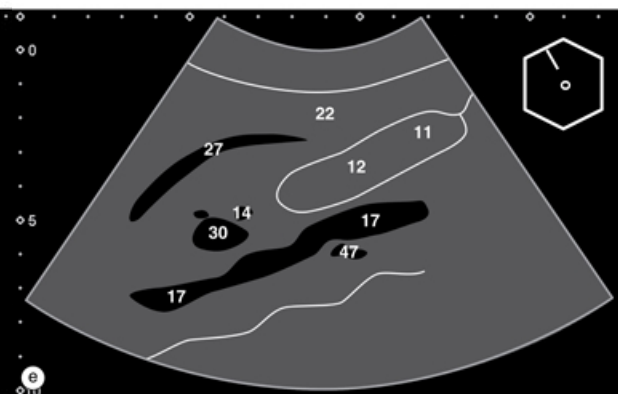
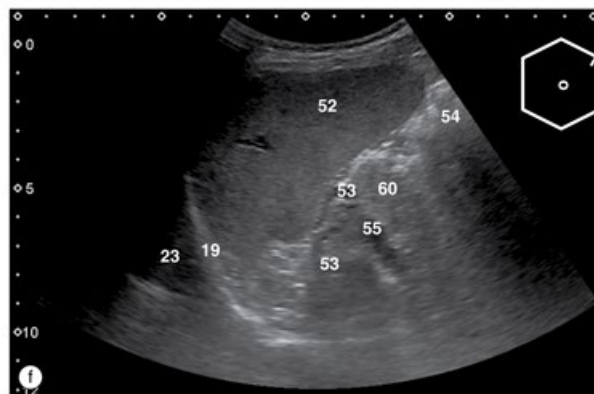
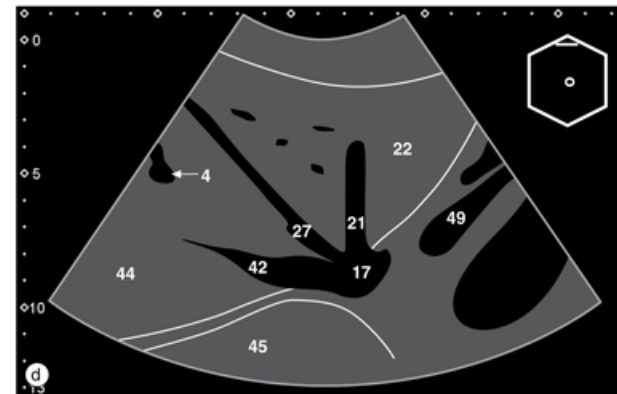
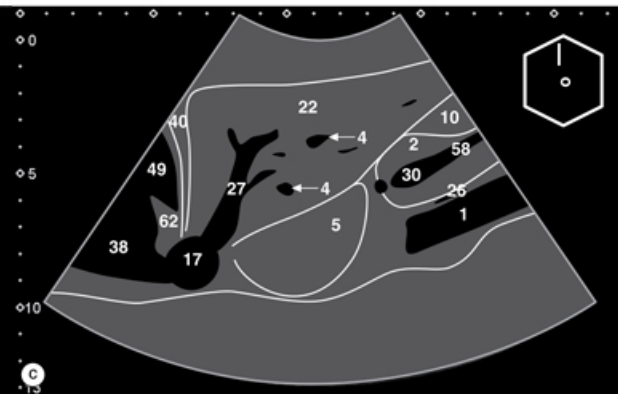
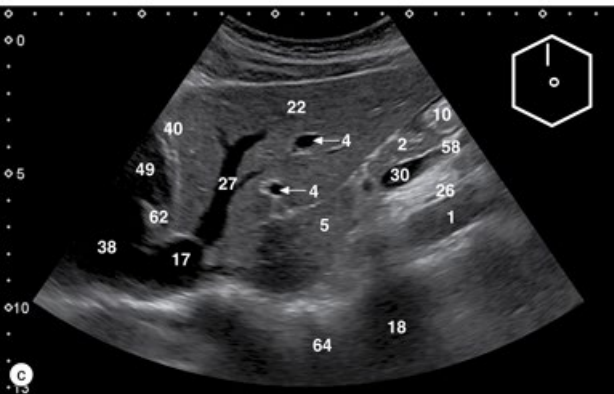
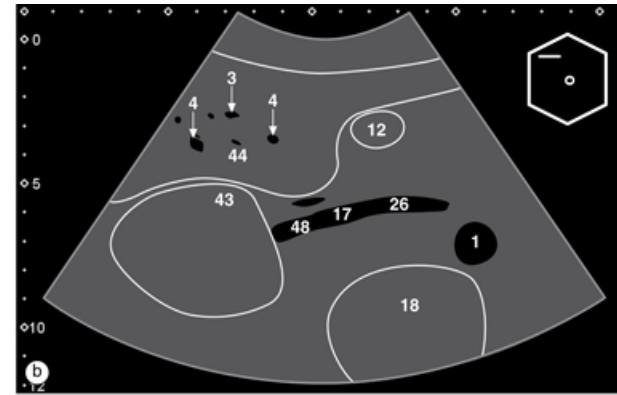
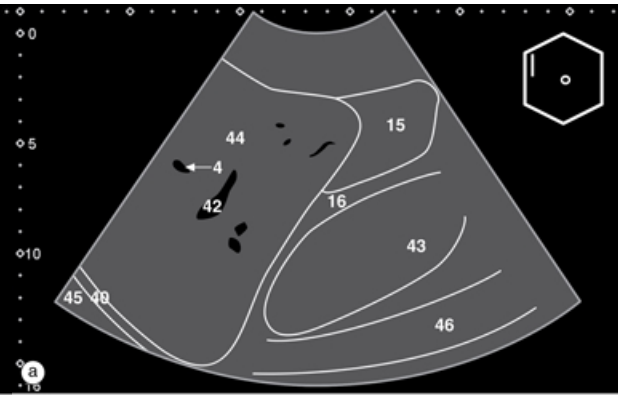
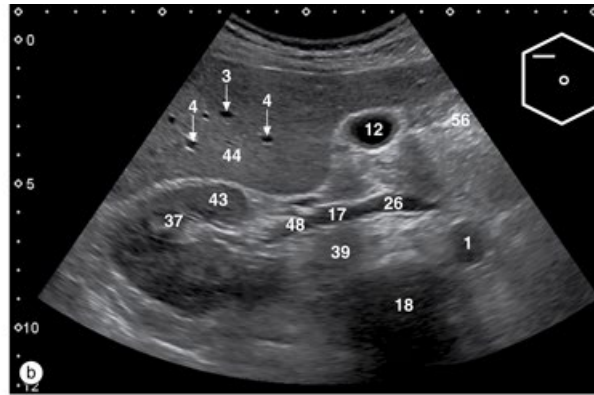
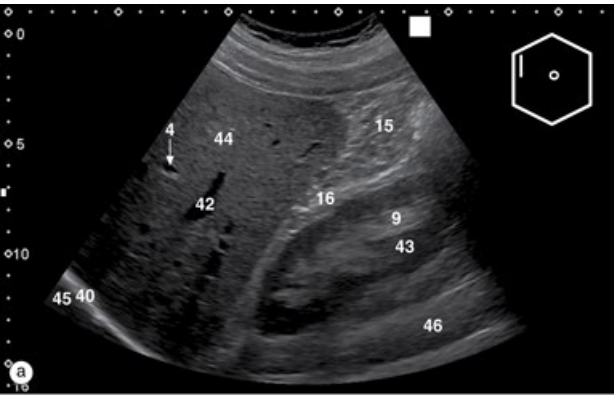


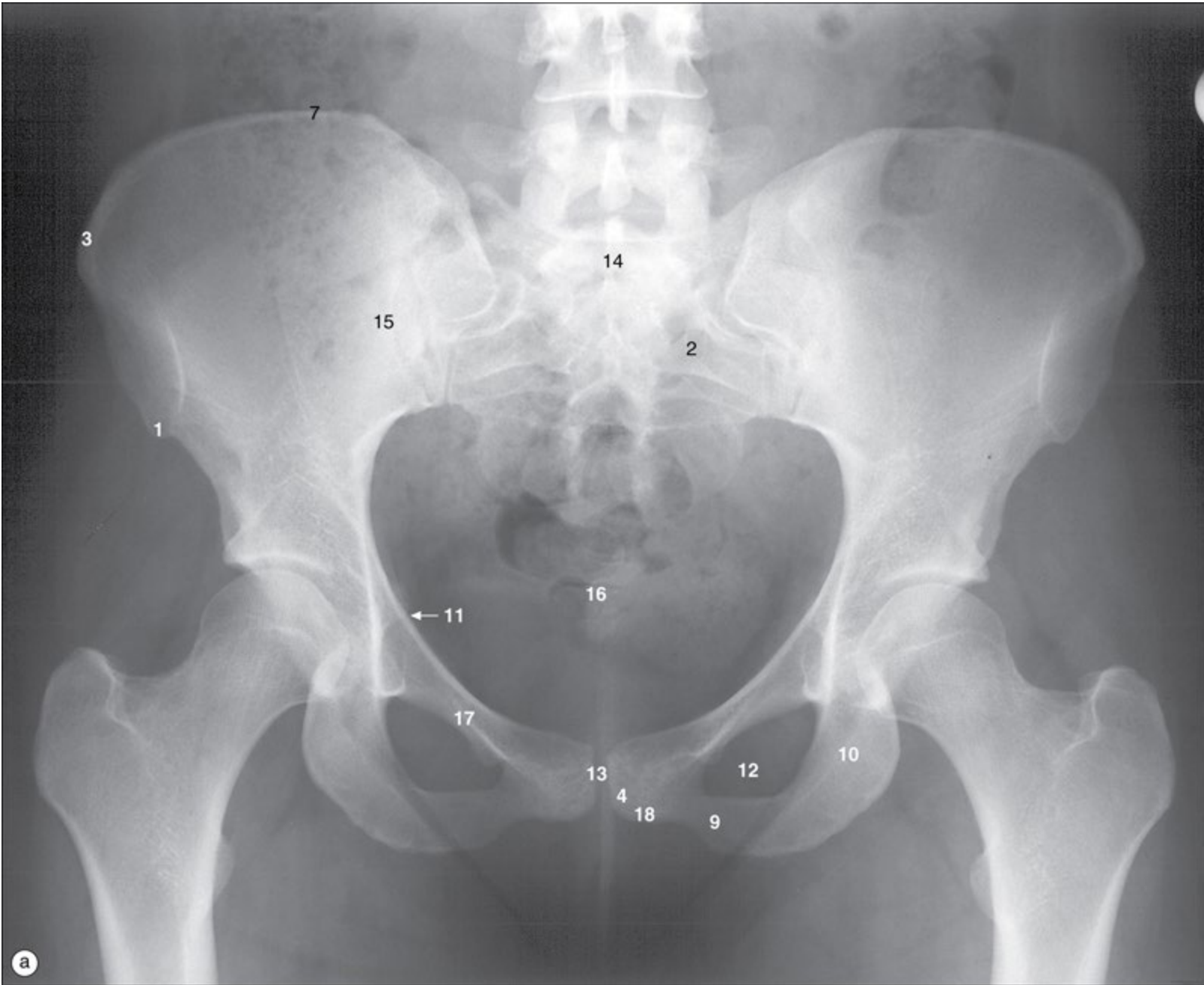
Pelve masculina, imagens de RM sagitais e sequenciais, ponderadas em T2, da direita para a esquerda.





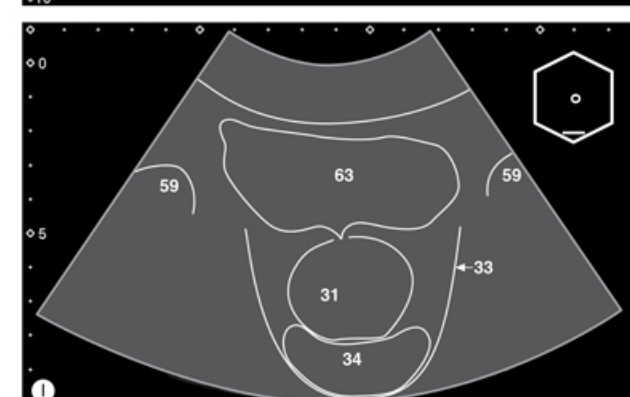
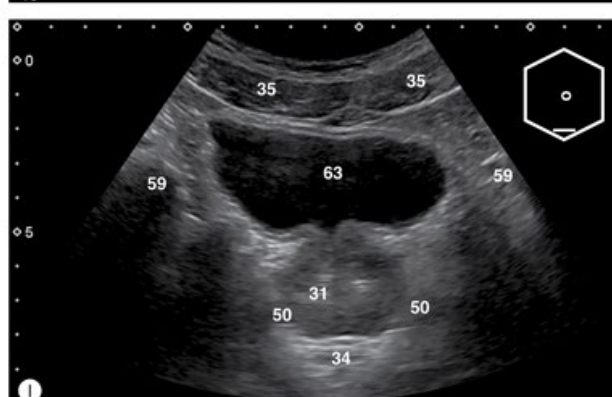
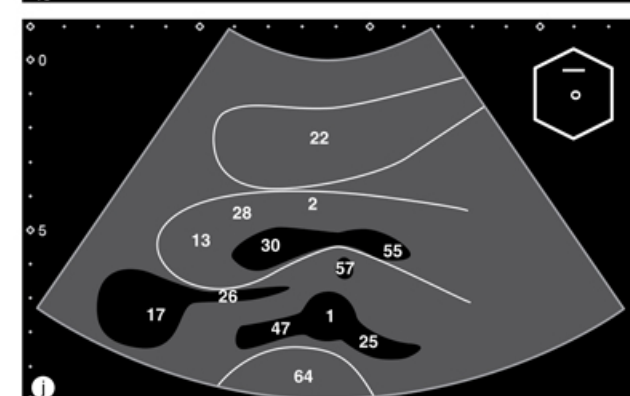
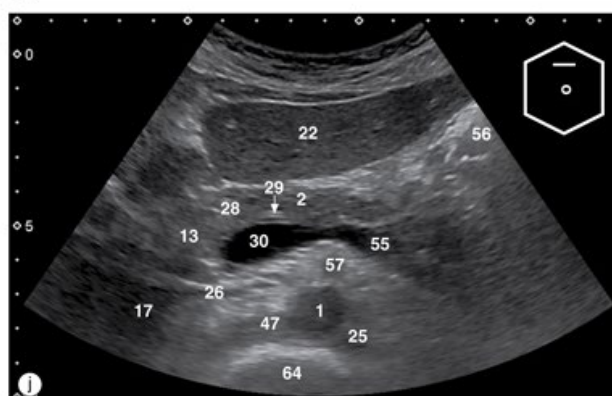
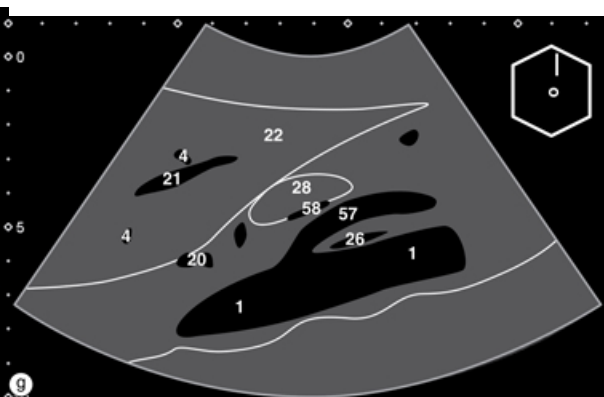
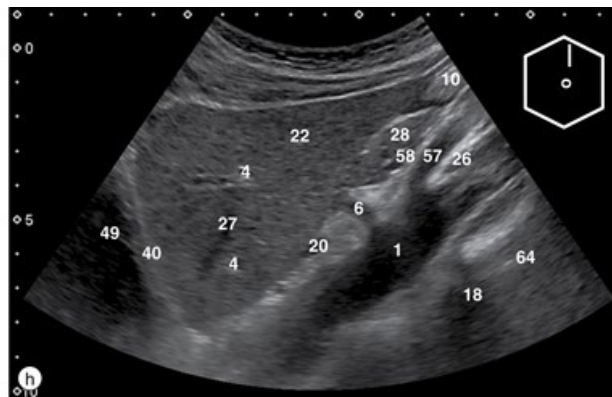
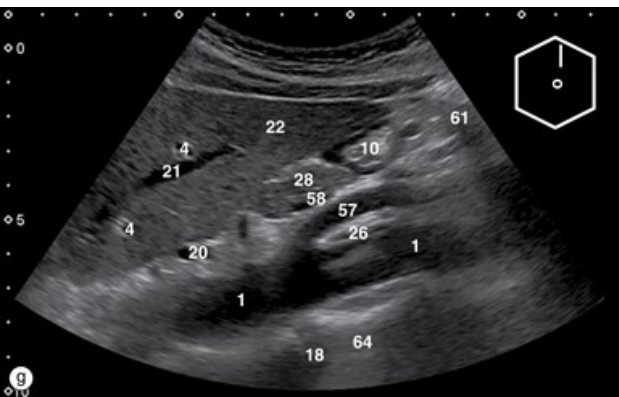
# Ultrassonografia do abdome superior







## Ultrassonografia de abdome e pelve



Abdome superior e pelve masculinos, imagens de ultrassonografia.

Diagramas com linhas das imagens de ultrassonografia.



***UniSALESIANO***

